

FAIR OAKS ESTATES CONDOMINIUM

CITY OF LAKE GENEVA
WALWORTH COUNTY, WISCONSIN

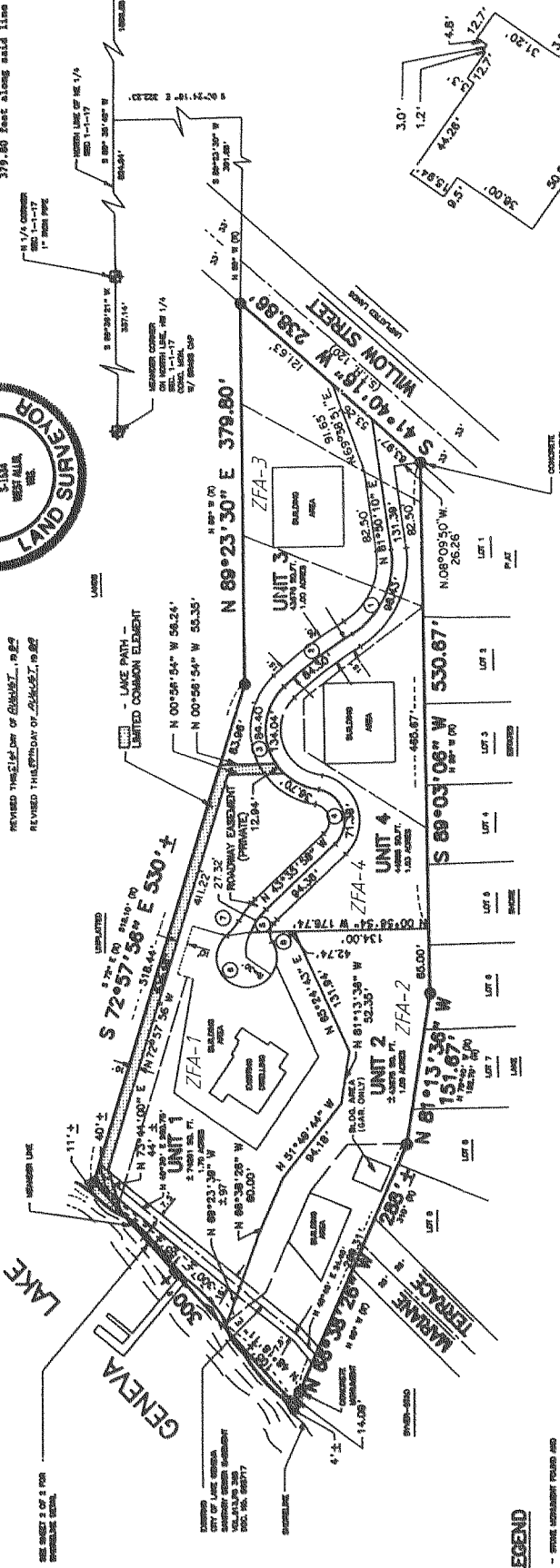
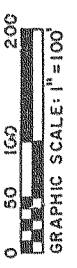
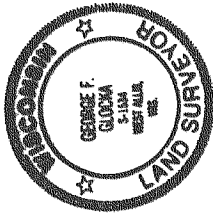
Notes:

- The "Traverse boundary easement" over and across Units 1, 2, 3, 4, and 5 is shown as a dashed line. This easement is limited to the lake path and utility easement shown and agreed to Unit 2 as provided by Marlene Terrens.
- Locations of building construction and/or building improvements is limited to that area designated as "BUILDING AREA" within each unit.
- Lake path limited common element is located for the exclusive benefit of Units 3 and 4.
- Units 1, 2, and 5 are limited common elements lake path are subject to the existing rights of the public in and to the forefront along the shore of Geneva Lake.
- See Sheet 2 of 2 for "Traverse Boundary Easement" curve data.

REVISIONS:

- REVISED THE SHORELINE OF JUNE, 1982
- REVISED THE ELONGATION OF GENEREA LAKE
- REVISED THE ELONGATION OF GENEREA LAKE

REVISIONS: 04/11/89
REVISIONS: 04/11/89



LEGEND

- CONSERVATION EASEMENT
- LAKE PATH - LIMITED COMMON ELEMENT

R. A. Smith & Assoc., Inc.
SURVEYORS
1000 NORTH MADISON STREET, SUITE 1000
MILWAUKEE, WISCONSIN 53233
PHONE: 462-3333 FAX: 462-3333
THIS INSTRUMENT WAS DRAFTED BY GEORGE F. GLOCKA, R.L.S.

REVISIONS: 04/11/89

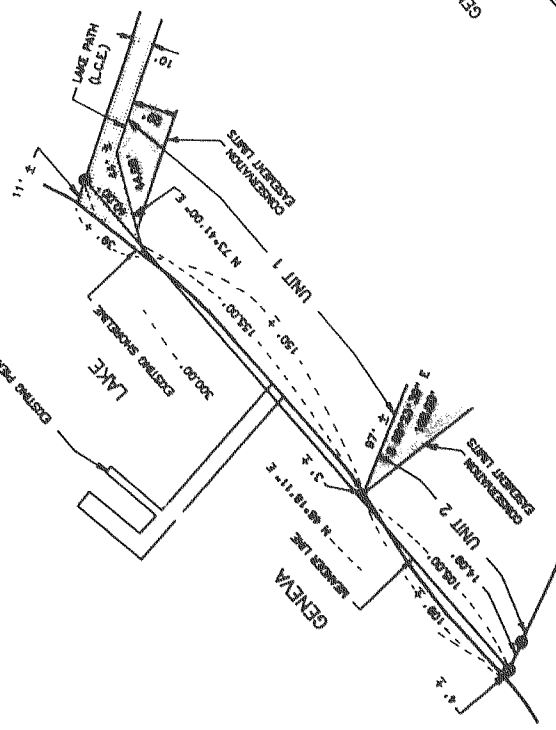
EXISTING DWELLING DETAIL
SCALE: 1" = 40'

EXHIBIT A
SHEET 1 OF 2

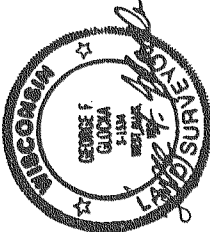
FAIR OAKS ESTATES CONDOMINIUM

CITY OF LAKE GENEVA
WALWORTH COUNTY, WISCONSIN

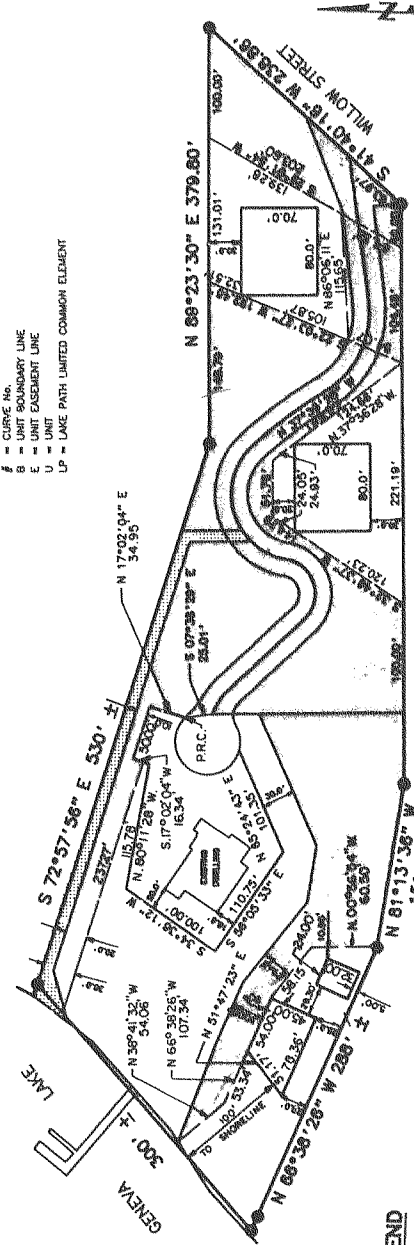
CITY OF LAKE GENEVA
WALWORTH COUNTY, WISCONSIN



SHORELINE DETAIL
SCALE: 1" = 50'



REVISED THIS DATE DAY OF JULY, 1989
REVISED THIS DATE DAY OF AUGUST, 1989



LEGEND
--- CONSERVATION EASEMENT
--- LAKE PATH - LIMITED COMMON ELEMENT

R. A. Smith & Assoc., Inc.
SURVEYORS
1000 NORTH MADISON STREET, SUITE 1000
MILWAUKEE, WISCONSIN 53233
PHONE: 462-3333 FAX: 462-3333
THIS INSTRUMENT WAS DRAFTED BY GEORGE F. GLOCKA, R.L.S.

CONSERVATION EASEMENT - BUILDING AREA DETAIL
SCALE: 1" = 100'

SHEET 2 OF 2

I hereby certify that I have on this 14th day of September, 19 89, microphotographed the above document in accordance with standards established by Sec. 228.03 (1) of Statutes and with established procedures. Keith Hansen, Camera Operator.

STATEMENT OF COMPLIANCE

I hereby certify that the within reproduction has been microfilmed on 35 Camera Cards and processed by the 35 Brand 2000 Processor-Camera containing processed silver negative film. 35 Brand 2000 Processor-Camera containing processed silver negative film, conform to the specifications for archival quality as defined in Federal Standard No. 123C Antireflection Photographic, and Film Photographic, Processed (For permanent record use)

John W. Albrecht
Director of Records