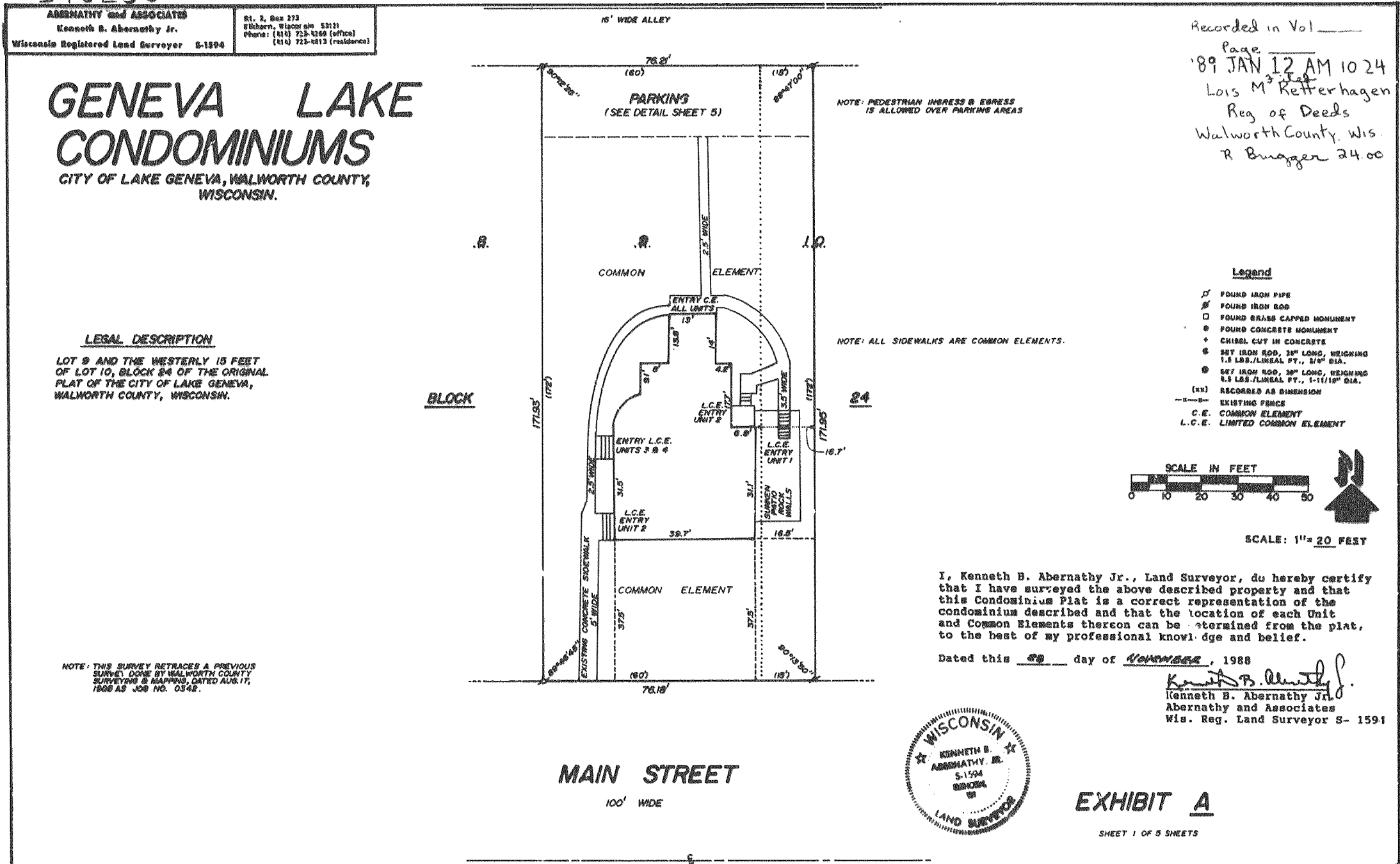
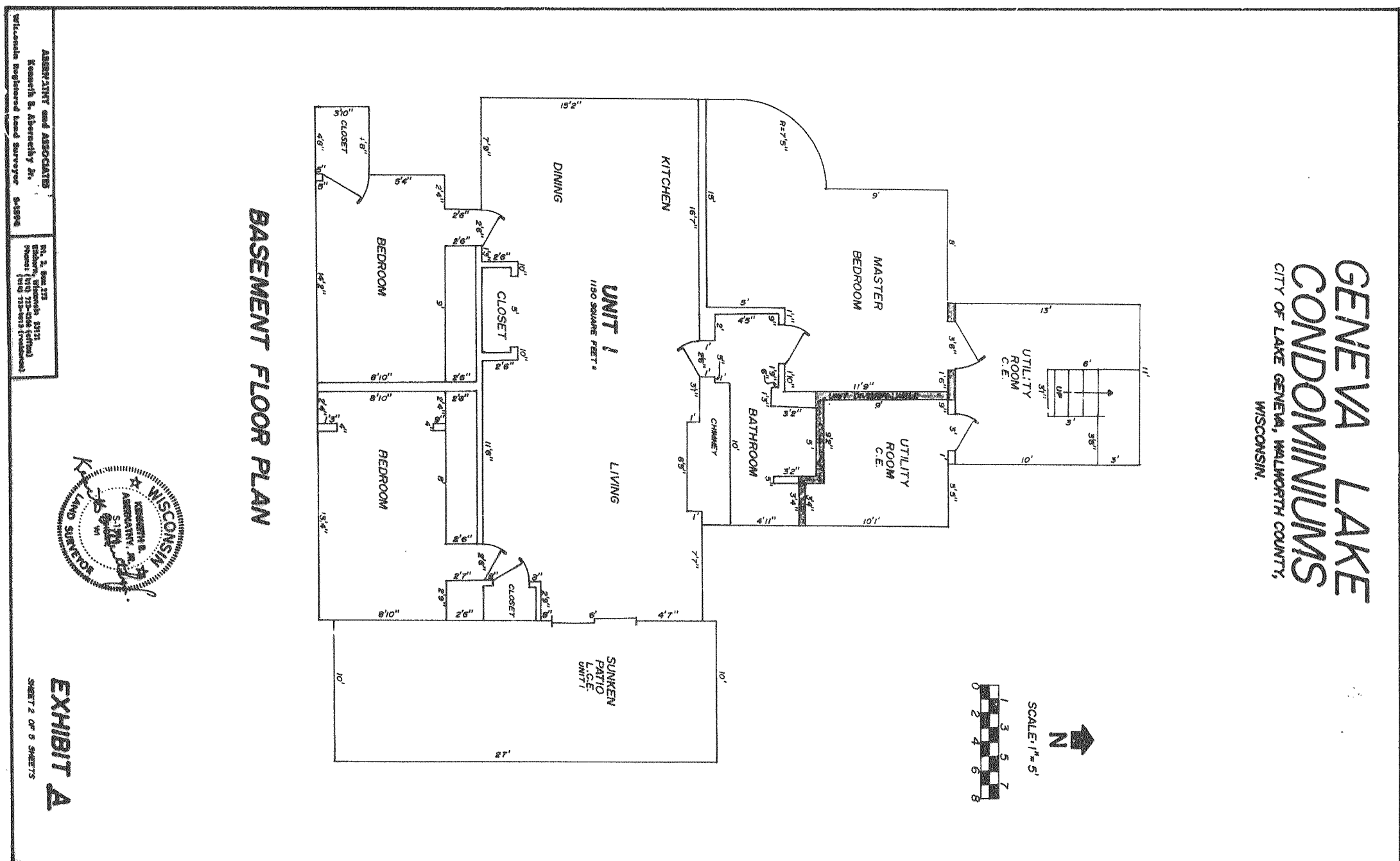


173253



I hereby certify that I have on this 13th day of January, 1989, microphotographed the above document in accordance with standards established by Sec. 226.03 (1) of Statutes and with established procedures.
Camera Operator



I, Kenneth B. Abernathy Jr., Land Surveyor, do hereby certify that I have surveyed the above described property and that this Condominium Plat is a correct representation of the condominium described and that the location of each Unit and Common Elements thereon can be determined from the plat, to the best of my professional knowledge and belief.
 Dated this 28 day of November, 1988
Kenneth B. Abernathy Jr.
 Kenneth B. Abernathy Jr.
 Abernathy and Associates
 Wis. Reg. Land Surveyor S-1594