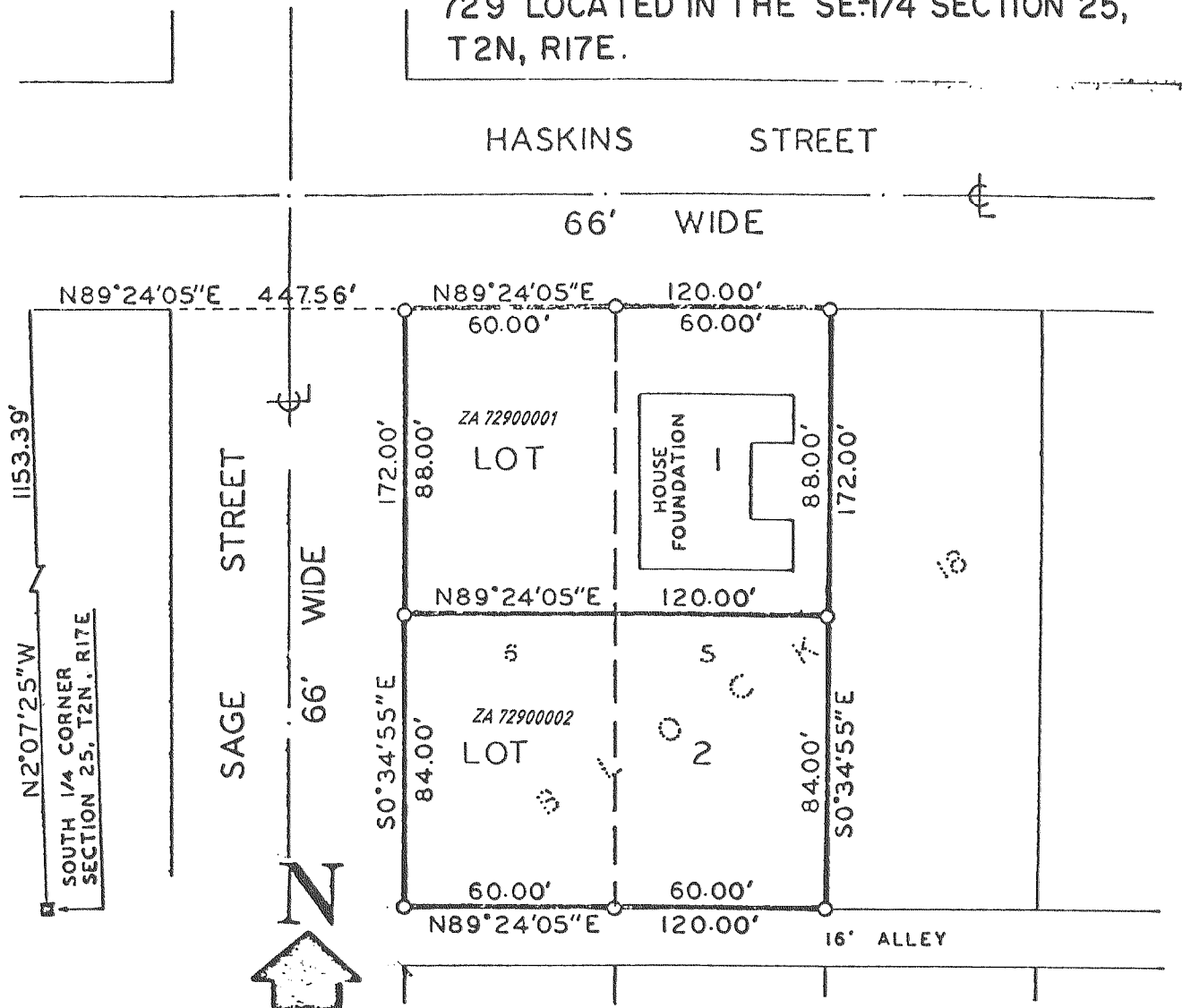


# CERTIFIED SURVEYS 729, 842, 857 AND 896

## CITY OF LAKE GENEVA

729 LOCATED IN THE SE-1/4 SECTION 25,  
T2N, R17E.



SCALE: 1"=50'

CERTIFIED SURVEY MAP NO. 729

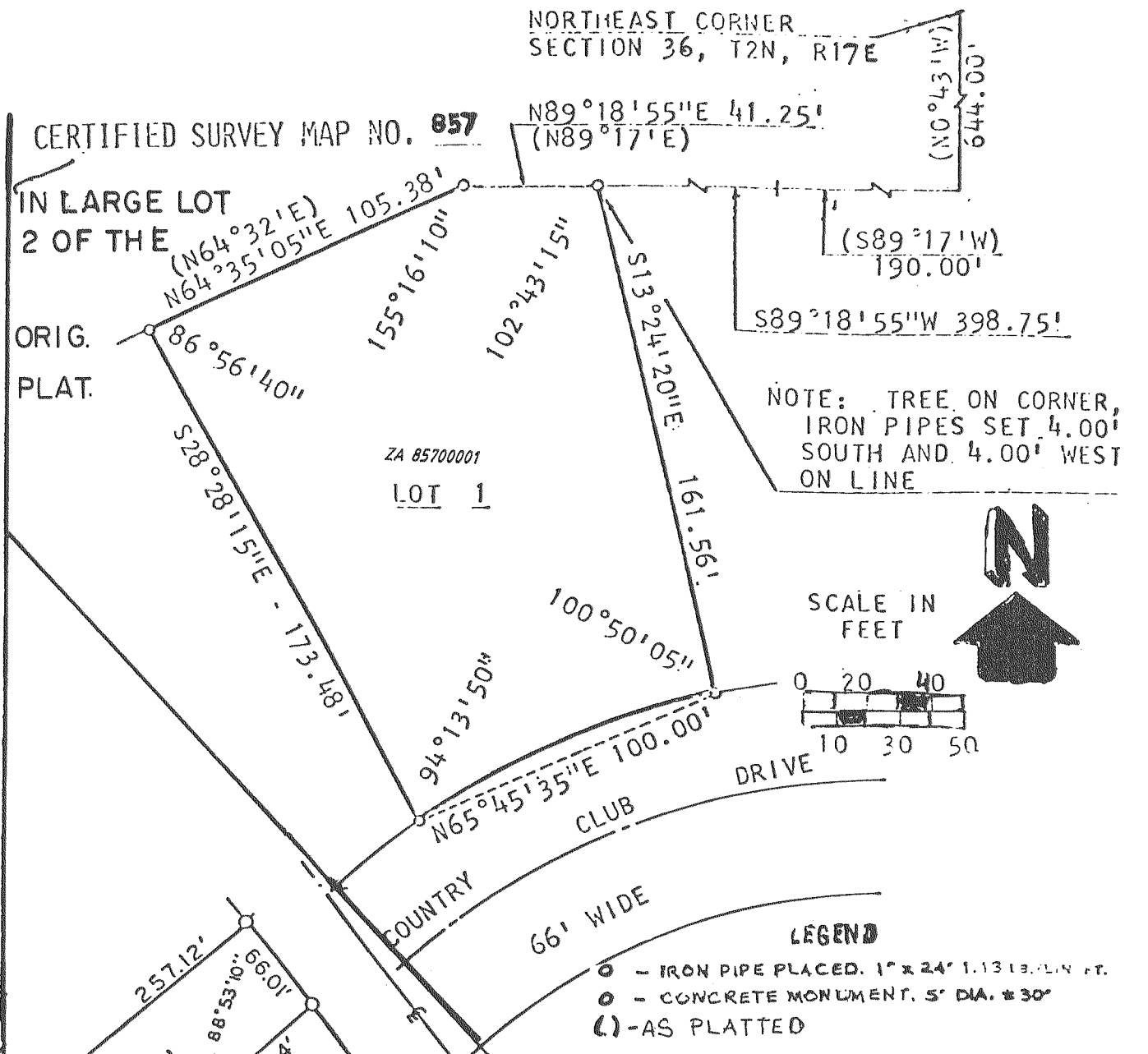
### LEGEND

- - IRON PIPE PLACED, 1" x 24" 1.13 LB./LIN. FT.
- - CONCRETE MONUMENT, 5" DIA. x 30"
- - 6" SQ. TOP X 9" SQ. BOTTOM X 36" CM

REVISIONS : 02/14/97

CERTIFIED SURVEY MAP NO. 857

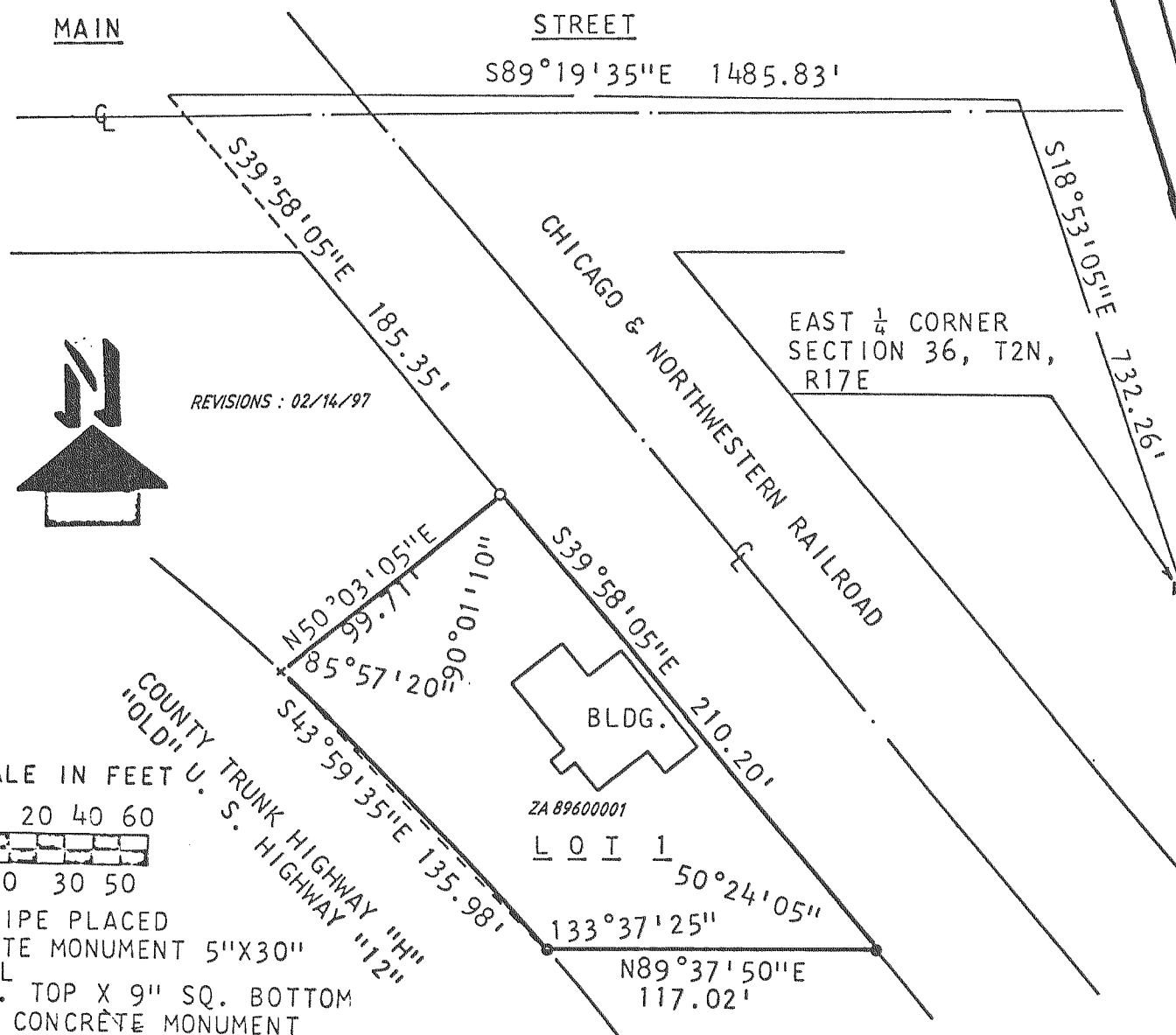
IN LARGE LOT  
2 OF THE  
ORIG.  
PLAT.



REVISIONS : 02/14/97

CERTIFIED SURVEY MAP NO. 896

A PARCEL OF LAND LOCATED IN THE NORTHEAST  
1/4 OF SECTION 36, TOWN 2 NORTH, RANGE 17  
EAST, CITY OF LAKE GENEVA, WALWORTH  
COUNTY, WISCONSIN.



REVISIONS : 02/14/97

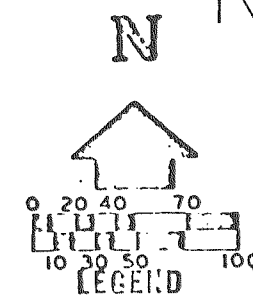
SCALE IN FEET  
0 20 40 60  
10 30 50

THIS CERT.  
LOT 1  
3.81 AC.  
SURVEY  
REPLACED

BY CERT. SURVEY

NO. 842 - IN THE NW-1/4 OF SECTION 6, T1N, R18E

NO. 854



- - IRON PIPE PLACED, 1" x 24" 1.13 LB./LIN. FT.
- - CONCRETE MONUMENT, 5" DIA. x 30"
- - CONG. MON. 6" SQ. TOP X 9" SQ. BOTTOM X 36"

SOUTH 1/4 CORNER  
SECTION 6, T1N, R18E

SCALE IN FEET

LEGEND

- - IRON PIPE PLACED, 1" x 24" 1.13 LB./LIN. FT.
- - CONCRETE MONUMENT, 5" DIA. x 30"
- - CONG. MON. 6" SQ. TOP X 9" SQ. BOTTOM X 36"