

CERTIFIED SURVEY NOS. 754, 812, 827, 828

CITY OF LAKE GENEVA

NO. 828 LOCATED IN NW 1/4 OF SEC. 6, T1N, R18E

NO. 827 LOCATED IN NW 1/4 OF SEC. 6, T1N, R18E

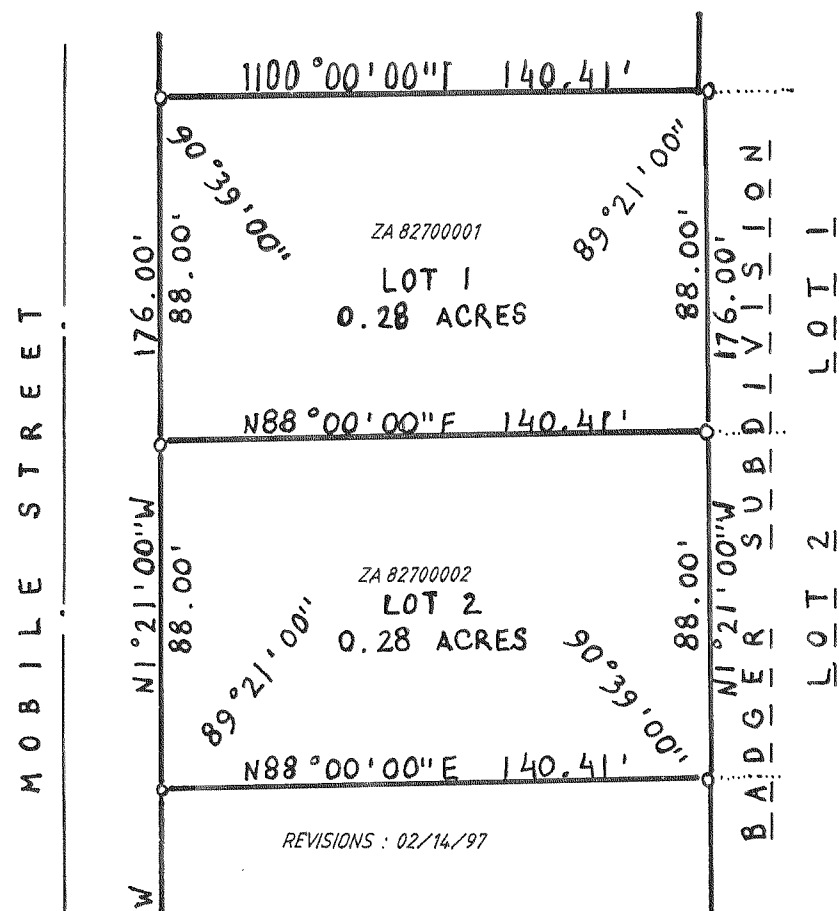
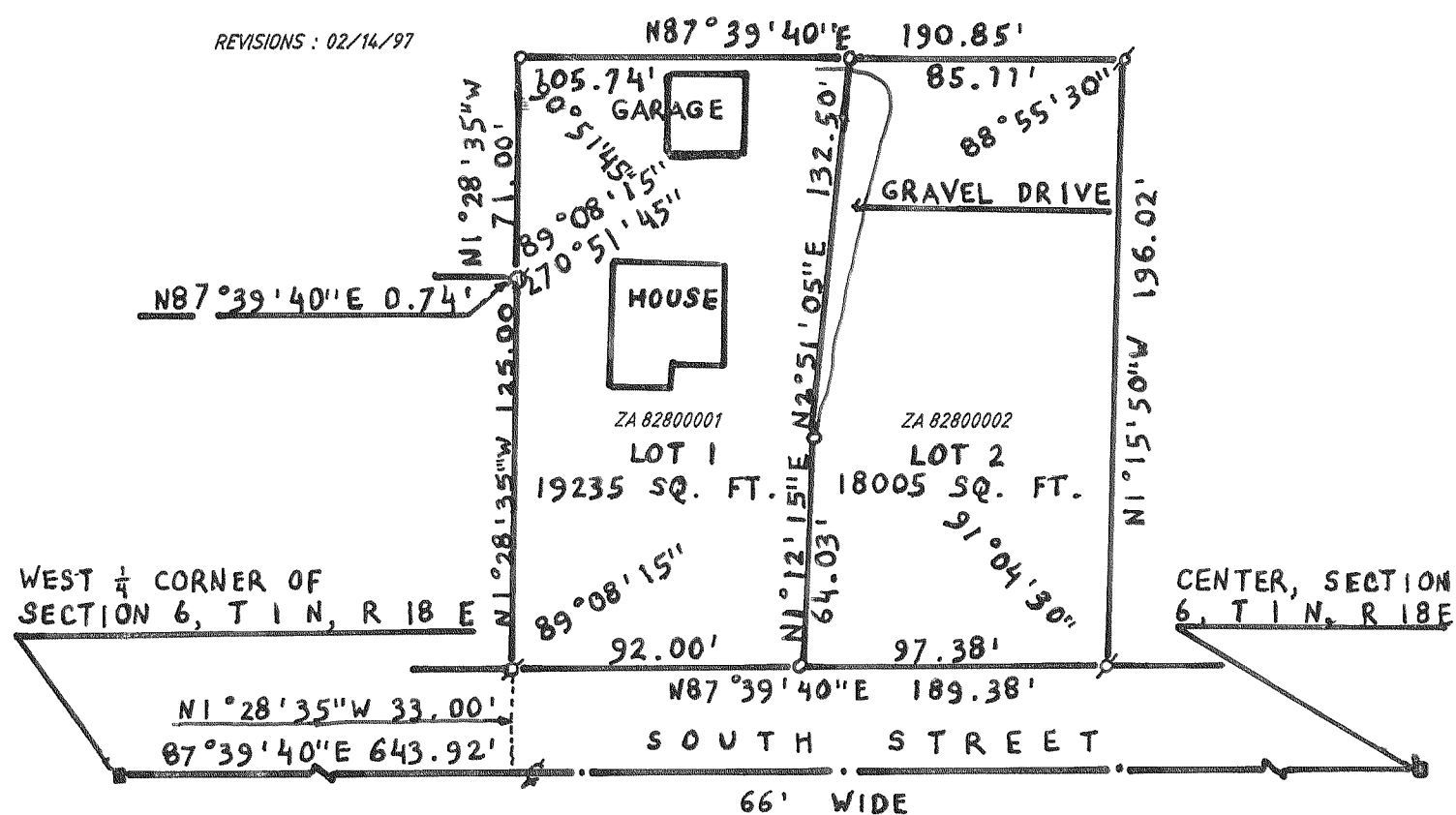
LEGEND

- IRON PIPE PLACED, 1" X 24", 1.13 LB./FT.
- CONCRETE MON. 6" SQ. TOP X 9" SQ. BOTTOM X 36"
- ⊙ IRON PIPE FOUND

LEGEND

- IRON PIPE PLACED, 1" X 24", 1.13 LB./FT.
- CONC. MON., 6" SQ. TOP X 9" SQ. BOTTOM X 36"
- ⊙ IRON PIPE FOUND

DUN R O M I N A C R E S
L O T 2 2



NO. 812 LOCATED IN NW 1/4 OF SEC. 6, T1N, R18E

NO. 754 LOCATED IN NE 1/4 OF SEC. 1, T1N, R17E

LEGEND

- IRON PIPE PLACED 1" X 24", 1.13 LB./FT.
- CONCRETE MON.
- () AS PLATTED

LEGEND

- IRON PIPE PLACED 1" X 24", 1.13 LB./FT.
- CONC. MON. 5" DIA. X 30"
- () AS PLATTED

