

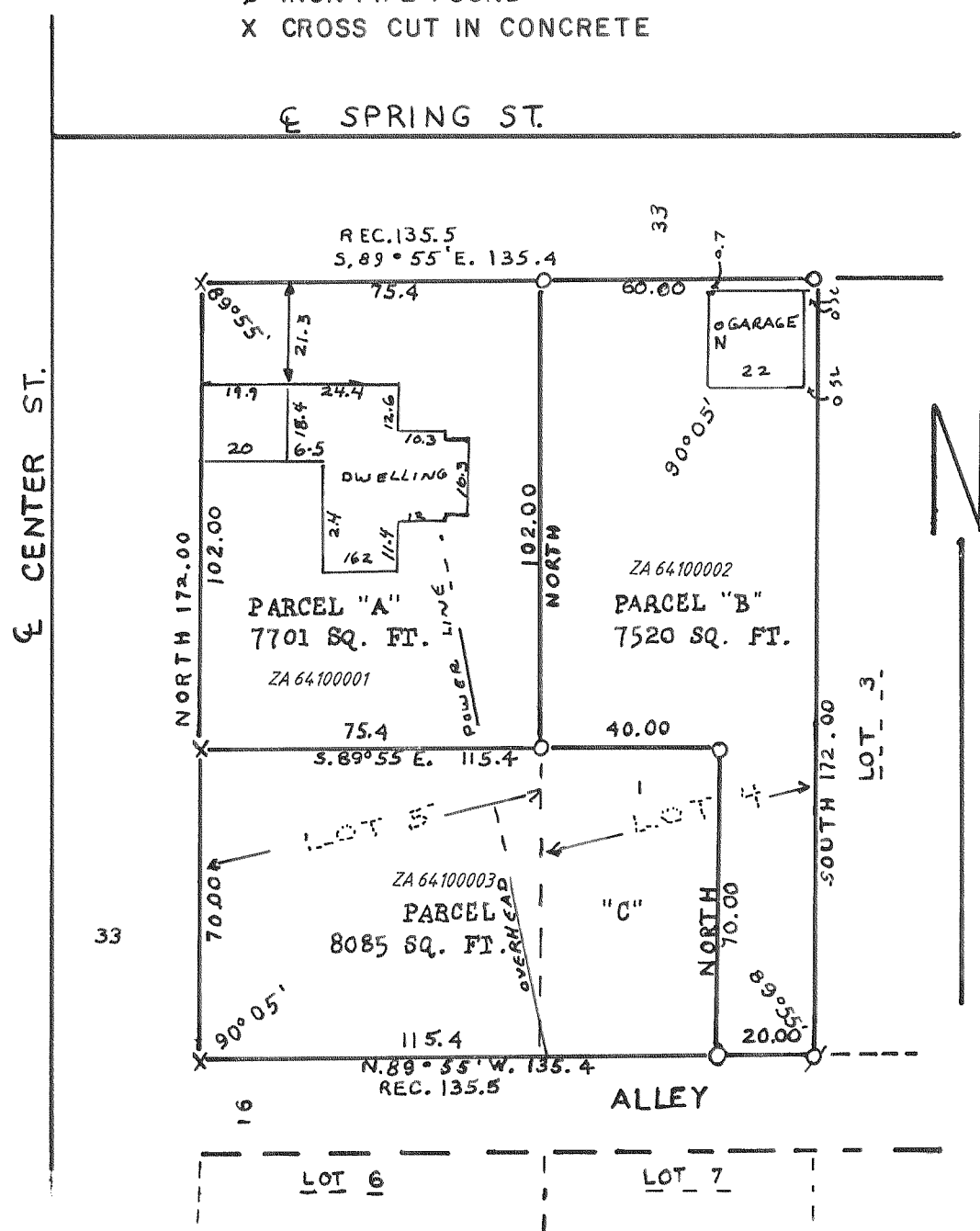
CERTIFIED SURVEY NOS. 641, 643, AND 662

CITY OF LAKE GENEVA

NO. 641 LOCATED IN LOTS 4 & 5, BLOCK 16.
LAKE GENEVA CRAWFORD MFG. ADDITION.

LEGEND

- IRON PIPE, 1" X 24", 1.13 LB./FT.
- ♂ IRON PIPE FOUND
- X CROSS CUT IN CONCRETE

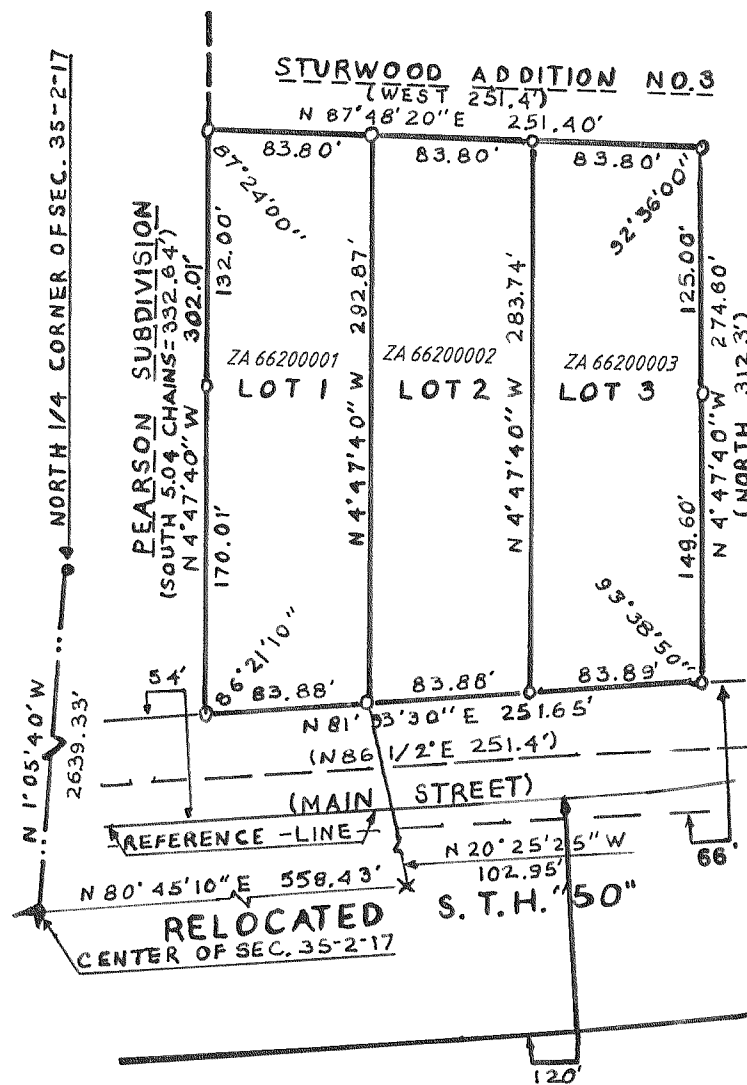


REVISIONS : 02/14/97

NO. 662 LOCATED IN NE 1/4 OF SEC. 35, T2N R17E
NOTE: C.S. 662 REPLACES C.S. 644

LEGEND

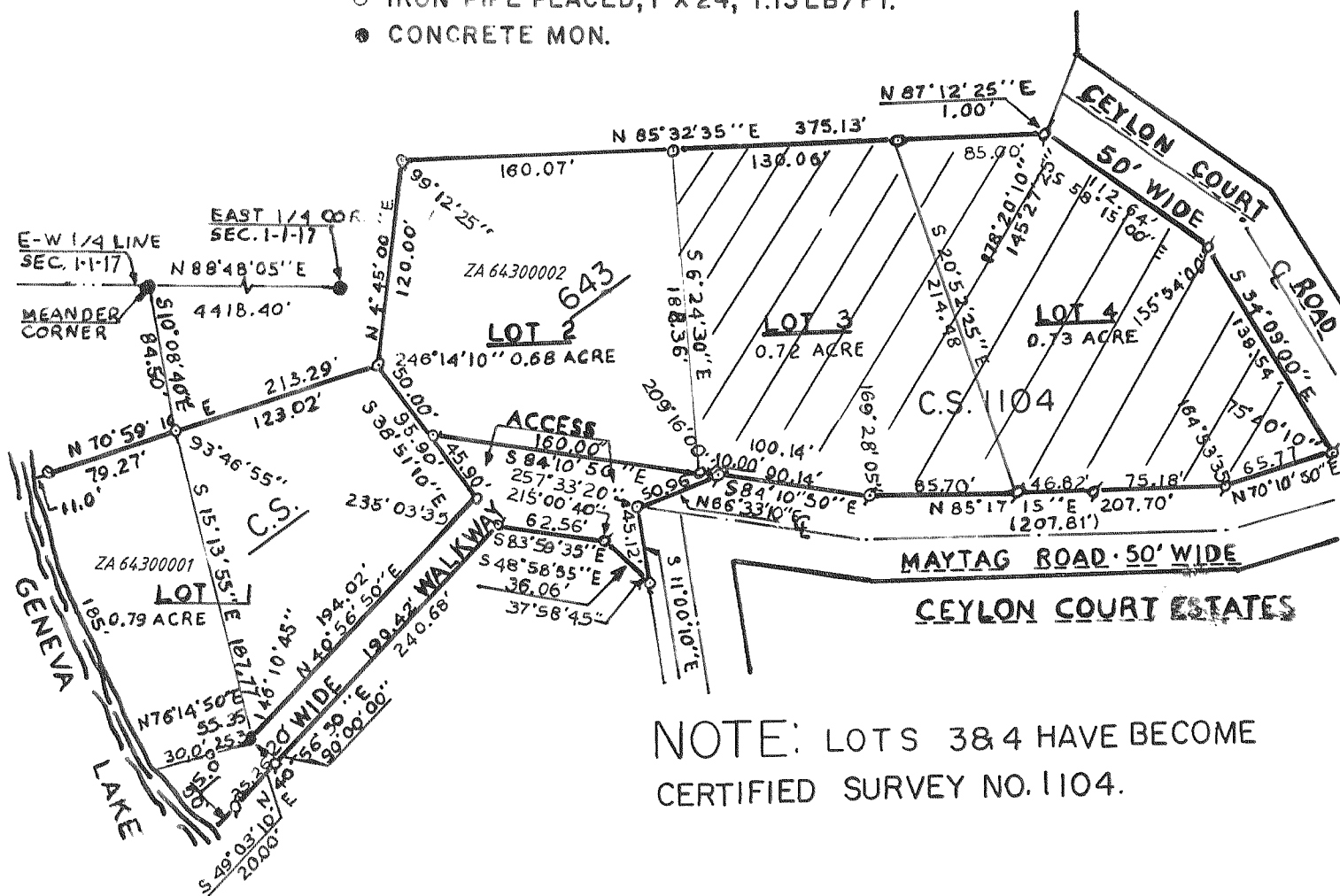
- IRON PIPE PLACED, 1" X 24", 1.13 LB./FT.
- CONCRETE MON. 6" SQ. TOP



REVISIONS : 02/14/97

NO. 643 LOCATED IN NW 1/4 & SW 1/4 OF SEC. 1, T1N R17E
LEGEND

- IRON PIPE PLACED, 1" X 24", 1.13 LB./FT.
- CONCRETE MON.



REVISIONS : 02/14/97

NOTE: LOTS 3 & 4 HAVE BECOME
CERTIFIED SURVEY NO. 1104.