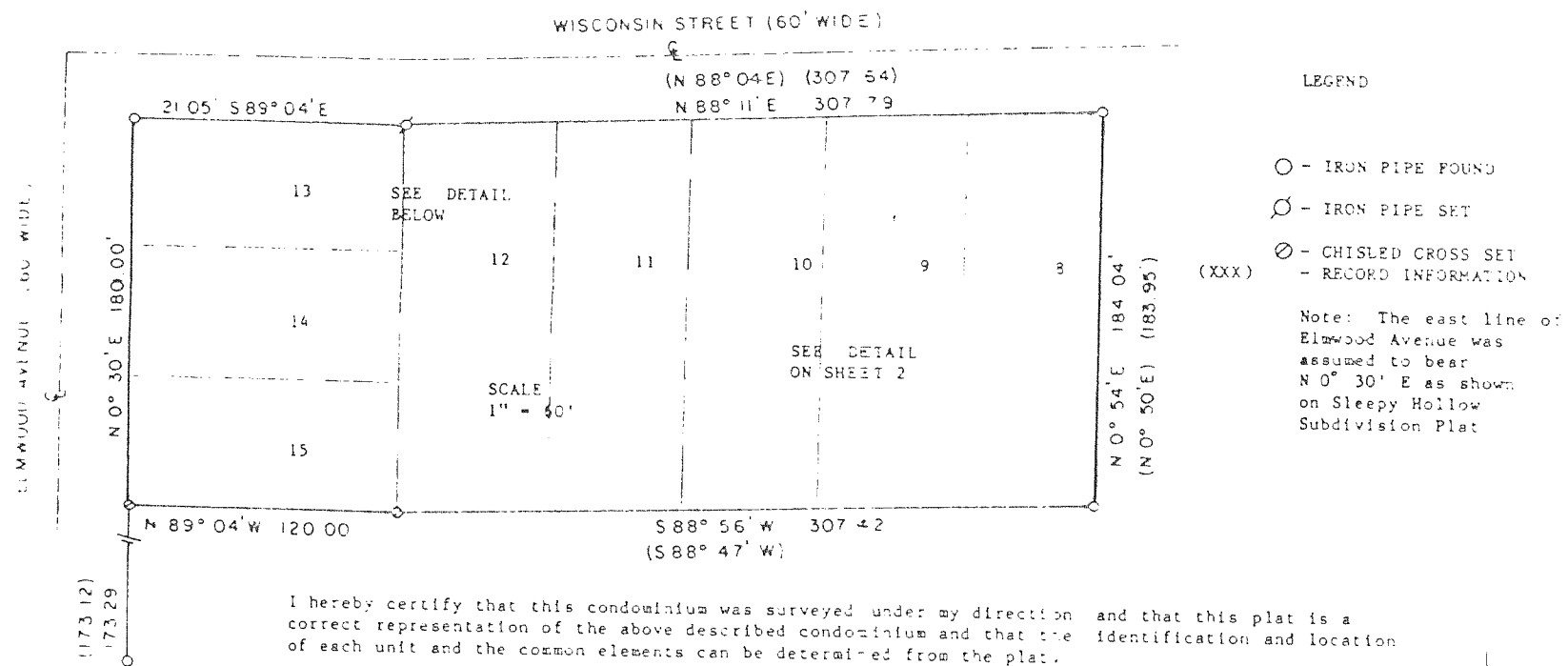


ELMWOOD TERRACE CONDOMINIUM HOMES
EXHIBIT A - SURVEY AND BUILDING LOCATION

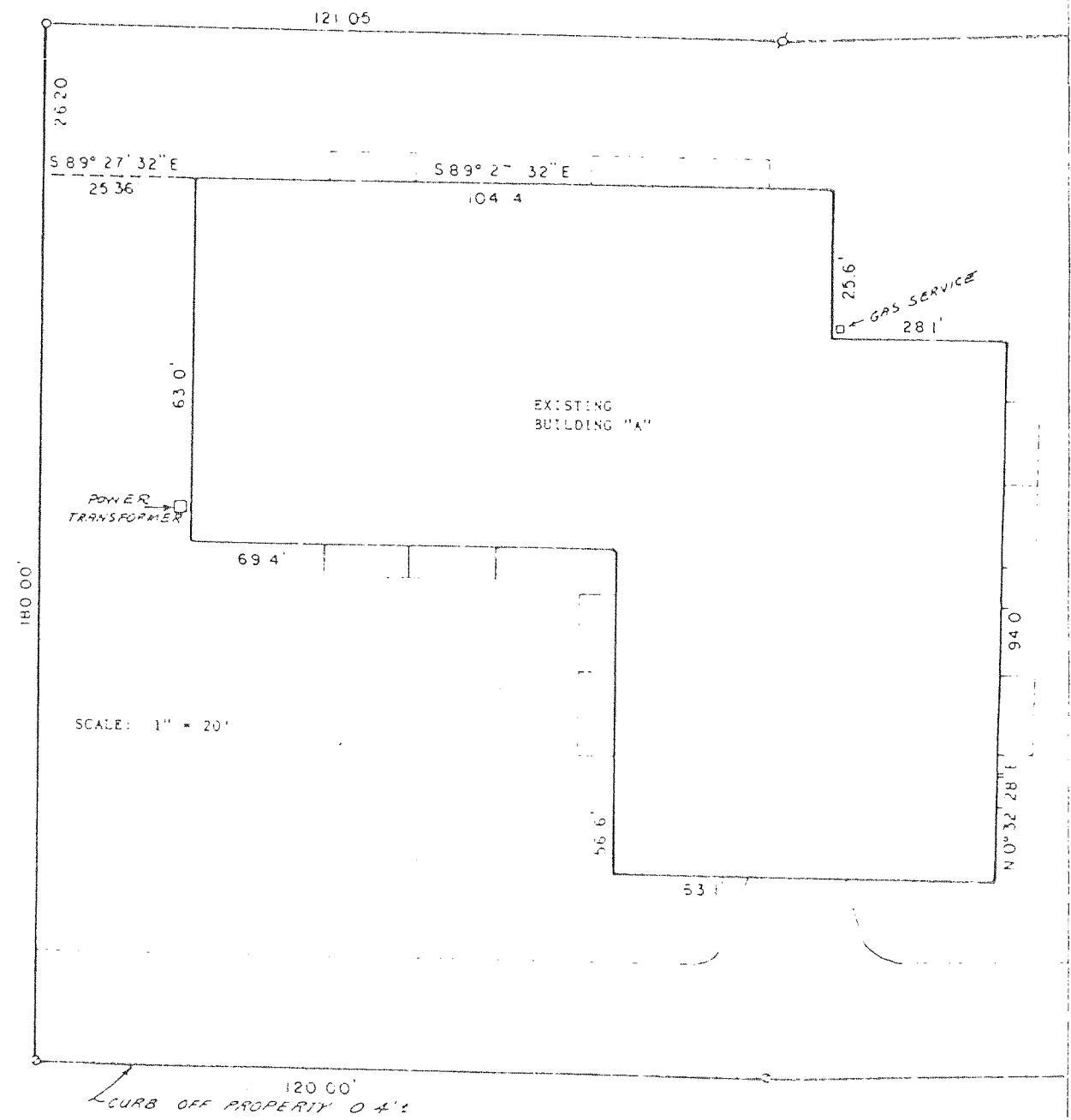
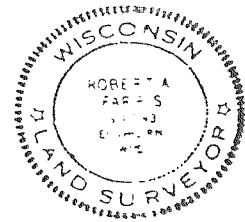
LEGAL DESCRIPTION
LOTS 8,9,10,11,12,13,14 AND 15 OF SLEEPY HOLLOW SUBDIVISION
CITY OF LAKE GENEVA, WALWORTH COUNTY, WISCONSIN



I hereby certify that this condominium was surveyed under my direction and that this plat is a correct representation of the above described condominium and that the identification and location of each unit and the common elements can be determined from the plat.

Robert A. Farris
Robert A. Farris, R. L. S.

Dated this 22nd day of Dec., 1984



ELMWOOD TERRACE CONDOMINIUM HOMES