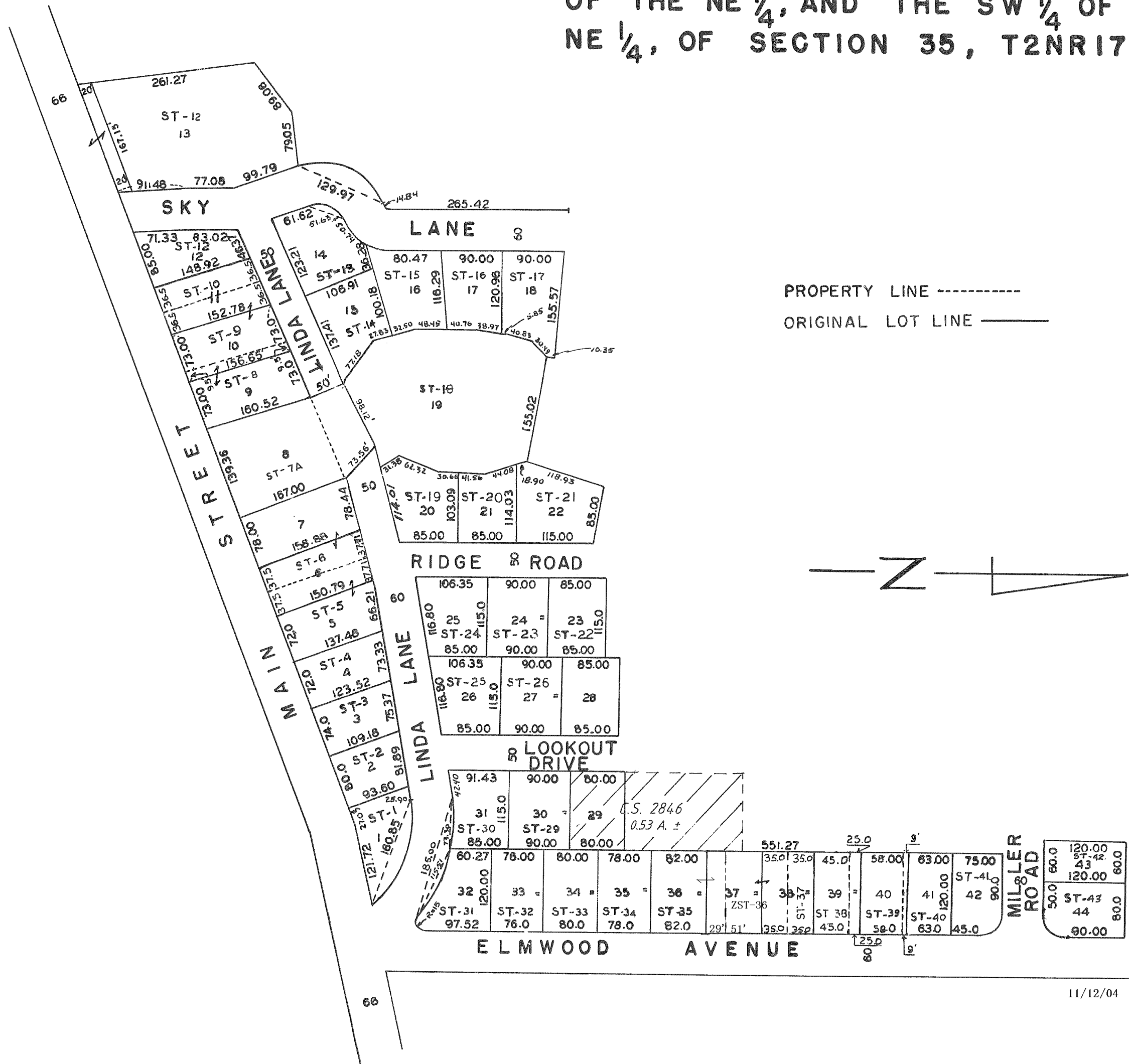


STURWOOD ADDITION

TO THE CITY OF LAKE GENEVA

NE 1/4 OF THE NE 1/4, AND THE SE 1/4 OF THE NE 1/4, AND THE SW 1/4 OF THE NE 1/4, OF SECTION 35, T2NR17E



PROPERTY LINE - - - - -

ORIGINAL LOT LINE ———

