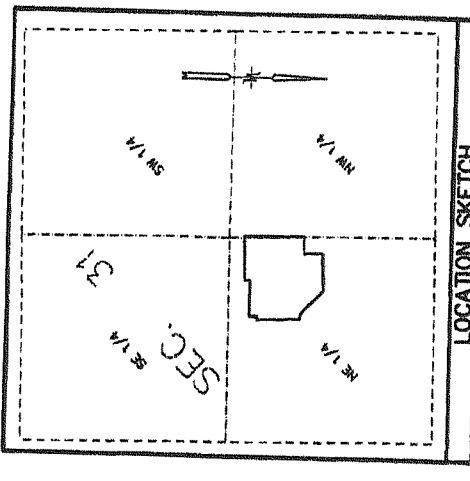


EAST 1/4 CORNER  
31-2-18  
2428.724' E  
S 89°31'15" W 1442.72'

S 89°51'15" W 2625.15' (S 89°31'15" W 2624.88')

WEST 1/4 CORNER  
31-2-18  
2428.724' E  
2427.18418' E

WEST 1/4 CORNER  
31-2-18  
2428.724' E  
2427.18418' E



LOCATION SKETCH

NO IMPROVEMENTS OR STRUCTURES ARE ALLOWED BETWEEN THE RIGHT-OF-WAY LINE AND THE HIGHWAY SETBACK LINE. TO, SINKS, PARKING AREAS, DRIVEWAYS, AND RETAINING WALLS, DRAINAGE FACILITIES, BUILDINGS, AND RETAINING WALLS. STRUCTURES AS SHOWN ON THIS PLAT. THIS RESTRICTION IS FOR THE BENEFIT OF THE PUBLIC AS PROVIDED IN SECTION 236.293, WISCONSIN STATUTES, AND SHALL BE ENFORCEABLE BY THE CITY OF LAKE GENEVA. CONTACT THE WISCONSIN DEPARTMENT OF TRANSPORTATION FOR MORE INFORMATION. THE PHONE NUMBER MAY BE OBTAINED BY CONTACTING THE COUNTY HIGHWAY DEPARTMENT.

AS OWNER I HEREBY RESERVE ALL LOTS AND BLOCKS IN THAT NO OWNER, POSSESSOR, USER, NOR LICENSEE, NOR OTHER PERSON SHALL HAVE ANY RIGHT OF WAY OR EGRESS WITHIN THE RIGHT-OF-WAY LINE WITH 50' AS SHOWN ON THE PLAT. IF BEING EXPRESSLY INTENDED THAT THIS RESTRICTION SHALL CONSTITUTE A PUBLIC USE AND SHALL BE ENFORCEABLE BY THE DEPARTMENT OF TRANSPORTATION.

PRESENT ZONING PLANNED BUSINESS & PLANNED INDUSTRIAL

LEGEND  
 O = FOUND IRON PIPE STAKE 1" DIA.  
 C = FOUND IRON PIPE STAKE 3/4" DIA.  
 \* = FOUND IRON PIPE STAKE 1/2" DIA.  
 (XXX) = RECORDED AS

NOTES: SANITARY SEWER AND WATERMAIN EASEMENTS TO BE DEDICATED TO THE CITY OF LAKE GENEVA BY SEPARATE PLAT.

ACCESS POINT AS PER LASALLE NATIONAL BANK AND LAKE GENEVA CENTRE, INC. RECORDED ON JUNE 25, 1985, IN V. 346, P. 325. (SEE RELOCATED EASEMENT)

15' WIDE DRAINAGE ESMT. AS PER AGREEMENT BETWEEN LASALLE NATIONAL BANK AND LAKE GENEVA CENTRE, INC. RECORDED ON JUNE 25, 1985, IN V. 346, P. 325.

15' WIDE UTILITY ESMT. AS PER AGREEMENT BETWEEN LASALLE NATIONAL BANK AND LAKE GENEVA CENTRE, INC. RECORDED ON JUNE 25, 1985, IN V. 346, P. 325.

30' RELOCATED UTILITY, ACCESS & EGRESS EASEMENT ORIG. REC. VOL. 346, PG. 325 REC. VOL. 346, PG. 325

30' WIDE UTILITY AND ACCESS EASEMENT ORIG. REC. VOL. 346, PG. 325 REC. VOL. 346, PG. 325

30' WIDE STORM SEWER EASEMENT AS PER CITY OF LAKE GENEVA REC. VOL. 346, PG. 325

40' WIDE SANITARY SEWER EASEMENT FROM WEDDLE TO THE CITY OF LAKE GENEVA RECORDED ON 12/25/08 IN BK. 346, PG. 300. SHOWN ON C.S.M. NO. 2973

30' WIDE DRAINAGE ESMT. AS PER AGREEMENT BETWEEN LASALLE NATIONAL BANK AND LAKE GENEVA CENTRE, INC. RECORDED ON JUNE 25, 1985, IN V. 346, P. 325.

30' WIDE UTILITY AND ACCESS EASEMENT ORIG. REC. VOL. 346, PG. 325 REC. VOL. 346, PG. 325

30' WIDE UTILITY AND ACCESS EASEMENT ORIG. REC. VOL. 346, PG. 325 REC. VOL. 346, PG. 325

30' WIDE UTILITY AND ACCESS EASEMENT ORIG. REC. VOL. 346, PG. 325 REC. VOL. 346, PG. 325

30' WIDE UTILITY AND ACCESS EASEMENT ORIG. REC. VOL. 346, PG. 325 REC. VOL. 346, PG. 325

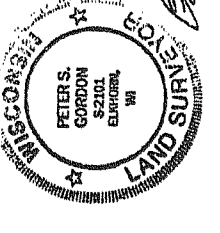
30' WIDE UTILITY AND ACCESS EASEMENT ORIG. REC. VOL. 346, PG. 325 REC. VOL. 346, PG. 325

30' WIDE UTILITY AND ACCESS EASEMENT ORIG. REC. VOL. 346, PG. 325 REC. VOL. 346, PG. 325

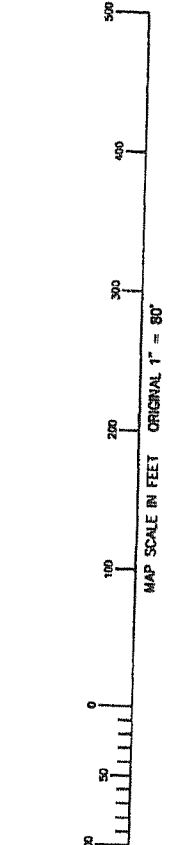
30' WIDE UTILITY AND ACCESS EASEMENT ORIG. REC. VOL. 346, PG. 325 REC. VOL. 346, PG. 325

30' WIDE UTILITY AND ACCESS EASEMENT ORIG. REC. VOL. 346, PG. 325 REC. VOL. 346, PG. 325

**WALMART SUBDIVISION**  
 A REDIVISION OF LOT 2 & 3 OF  
 CERTIFIED SURVEY MAP NO. 2973  
 REC. AS DO. NO. 379822  
 & PART OF LOTS 1 THRU 10  
 LAKE GENEVA BUSINESS PARK  
 LAKE GENEVA BUSINESS PARK  
 REC. IN CAB. B OF PLATS, SLIDE 117, DOC. NO. 227992  
 LOCATED IN THE SE 1/4 OF THE NW 1/4, &  
 THE SW 1/4 OF THE NE 1/4  
 ALL IN SECTION 31, TOWN 2 NORTH, RANGE 18 EAST  
 CITY OF LAKE GENEVA  
 WALWORTH COUNTY, WISCONSIN



OCT. 15, 2002  
 Revised  
 11-25-2002  
 Peter S. Gordon

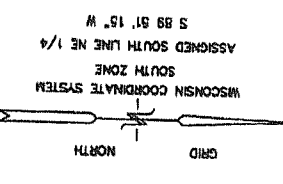


There are no objections to this plat with respect to Secs. 236.15, 236.16, 236.20 and 236.21 (1) and (2), Wis. Stats., ch. Trans. 233 Wis. Admin. Code or by the County Planning Agency as provided by Sec. 236.12 (6), Wis. Stats.  
 Certified December 4th, 2002  
 Anne M. Pong  
 Department of Administration

STATE ROUTE 50  
 WIDTH VARIES

**FARRIS, HANSEN & ASSOCIATES, INC.**  
 ENGINEERING - ARCHITECTURE - SURVEYING  
 7 RIDGWAY COURT, PO BOX 437  
 ELKHORN, WISCONSIN 53121  
 PHONE: (282) 723-2088  
 FAX: (282) 723-5888  
 PROJ. NO. 578 DATE: 10-18-2002

**EDWARDS BLVD. (STATE ROUTE 120)**  
 120 FT. WIDE RIGHT-OF-WAY



OWNERS (SUBDIVIDERS):  
 NATIONAL BANK AND LAKE GENEVA CENTRE, INC.  
 ATTORNEY AT LAW  
 716 WISCONSIN STREET  
 LAKE GENEVA, WI 53147  
 ATTN: BERTHOLD BRADEN  
 GENEVA LAKE DEVELOPMENT CORP., A W. CORP.  
 1000 WISCONSIN STREET  
 LAKE GENEVA, WI 53147  
 GENEVA BUSINESS CENTRE, LLC, A W. LIMITED LIABILITY CO.  
 PO BOX 460  
 LAKE GENEVA, WI  
 BANDO MCGLOTHLIN SMALL BUSINESS LENDING CORP.  
 1000 WISCONSIN STREET  
 FRAUNKEL, WI 53072