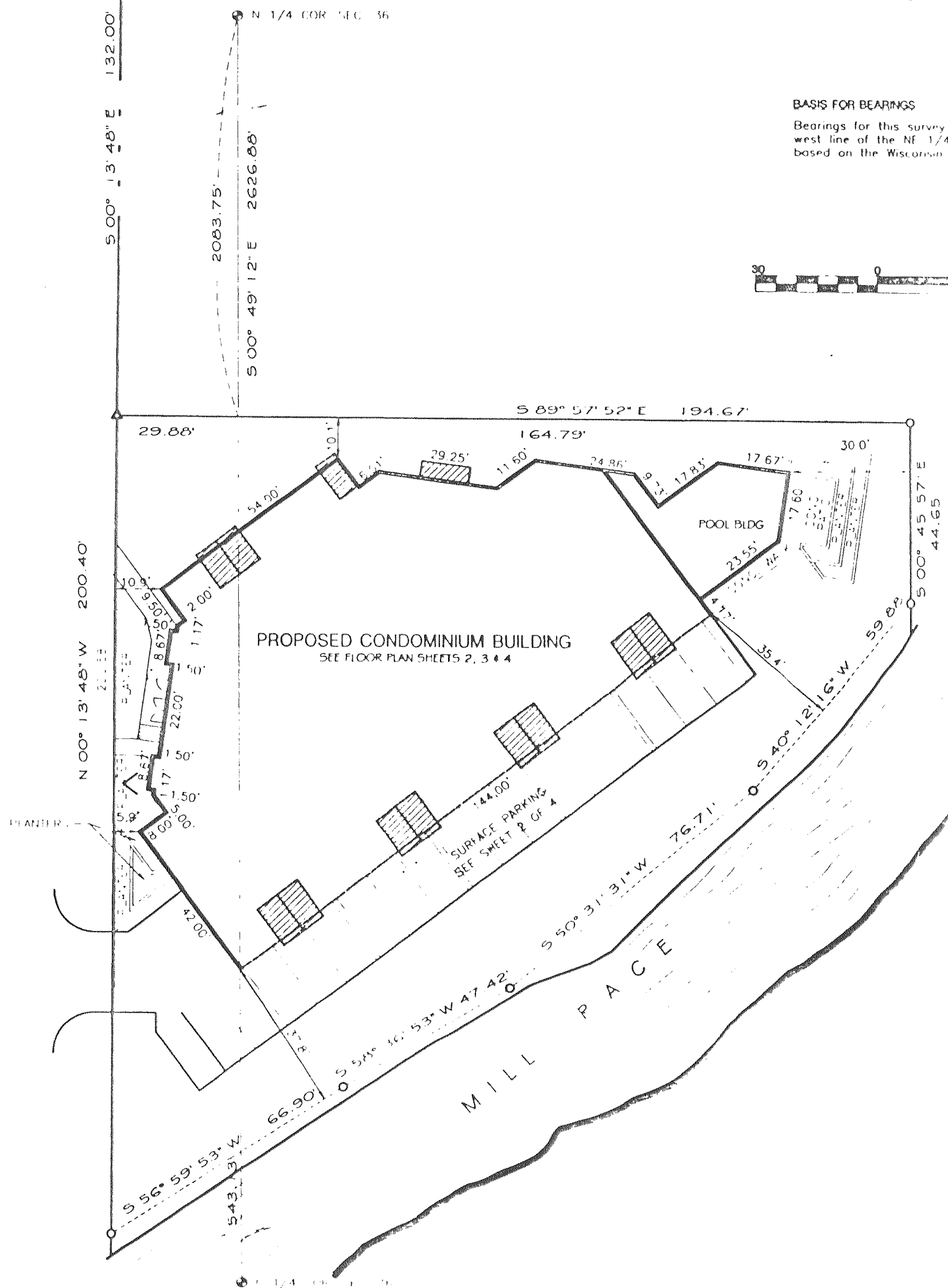


MILL CREEK CONDOMINIUM PLAT

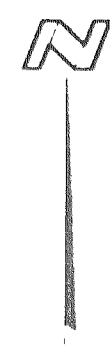
BEING A PART OF BLOCK 29, ORIGINAL PLAT OF LAKE GENEVA AND A PART OF THE MILL RESERVATION AREA
LOCATED IN SECTION 36, T 2 N, R 17 E, CITY OF LAKE GENEVA, WALWORTH COUNTY, WISCONSIN
OWNER: MILL CREEK DEVELOPMENT, LLC

NW CORNER LOT 4
CENTER STREET



BASIS FOR BEARINGS

Bearings for this survey and plat are based on the west line of the NE 1/4 bearing $S 00^{\circ} 49' 12'' E$ based on the Wisconsin State Plane South Zone Grid



LEGEND

- Walworth County PLS Marker, Found
- Exterior boundary of this condominium plat
- Meander Line
- 3/4 inch ID iron pipe, found
- 1 inch ID iron pipe, found
- 2 inch diameter pipe, found
- 4 inch diameter pipe, found
- 6 inch diameter pipe, found
- 8 inch diameter pipe, found
- 10 inch diameter pipe, found
- 12 inch diameter pipe, found
- 14 inch diameter pipe, found
- 16 inch diameter pipe, found
- 18 inch diameter pipe, found
- 20 inch diameter pipe, found
- 22 inch diameter pipe, found
- 24 inch diameter pipe, found
- 26 inch diameter pipe, found
- 28 inch diameter pipe, found
- 30 inch diameter pipe, found
- 32 inch diameter pipe, found
- 34 inch diameter pipe, found
- 36 inch diameter pipe, found
- 38 inch diameter pipe, found
- 40 inch diameter pipe, found
- 42 inch diameter pipe, found
- 44 inch diameter pipe, found
- 46 inch diameter pipe, found
- 48 inch diameter pipe, found
- 50 inch diameter pipe, found
- 52 inch diameter pipe, found
- 54 inch diameter pipe, found
- 56 inch diameter pipe, found
- 58 inch diameter pipe, found
- 60 inch diameter pipe, found
- 62 inch diameter pipe, found
- 64 inch diameter pipe, found
- 66 inch diameter pipe, found
- 68 inch diameter pipe, found
- 70 inch diameter pipe, found
- 72 inch diameter pipe, found
- 74 inch diameter pipe, found
- 76 inch diameter pipe, found
- 78 inch diameter pipe, found
- 80 inch diameter pipe, found
- 82 inch diameter pipe, found
- 84 inch diameter pipe, found
- 86 inch diameter pipe, found
- 88 inch diameter pipe, found
- 90 inch diameter pipe, found
- 92 inch diameter pipe, found
- 94 inch diameter pipe, found
- 96 inch diameter pipe, found
- 98 inch diameter pipe, found
- 100 inch diameter pipe, found

NOTES

1. ALL AREAS NOT SHOWN OUTSIDE THE BUILDING OUTLINE, NOT DESCRIBED AS LIMITED COMMON ELEMENTS OR AS COMMON ELEMENTS, ARE COMMON ELEMENTS.
2. A PLANKED HEATH ELEMENT IS RESERVED OVER ALL COMMON ELEMENTS FOR THE UTILIZATION OF UTILITIES AS REQUIRED.

SURVEYORS CERTIFICATE

I, Gregory J. Hofmeister, Registered Land Surveyor S-1113 hereby certify that I have surveyed and mapped the condominiums shown on this plat in accordance with the requirements of Chapter 703.13 of the Wisconsin Statutes, that the identification and location of each unit and common elements can be determined from the plat and that this plat is a correct representation of the survey and condominium to the best of my knowledge and belief.

GREGORY J. HOFMEISTER
 Registered Land Surveyor S-1113

11/2/00
 DATE



LEGAL DESCRIPTION

Lot 1 of Walworth County Certified Survey Map No. 3181, recorded in the office of the Register of Deeds for Walworth County, Wisconsin on December 27, 1999 in Volume 17 of Certified Survey Maps on Page 250 as Document No. 434133.