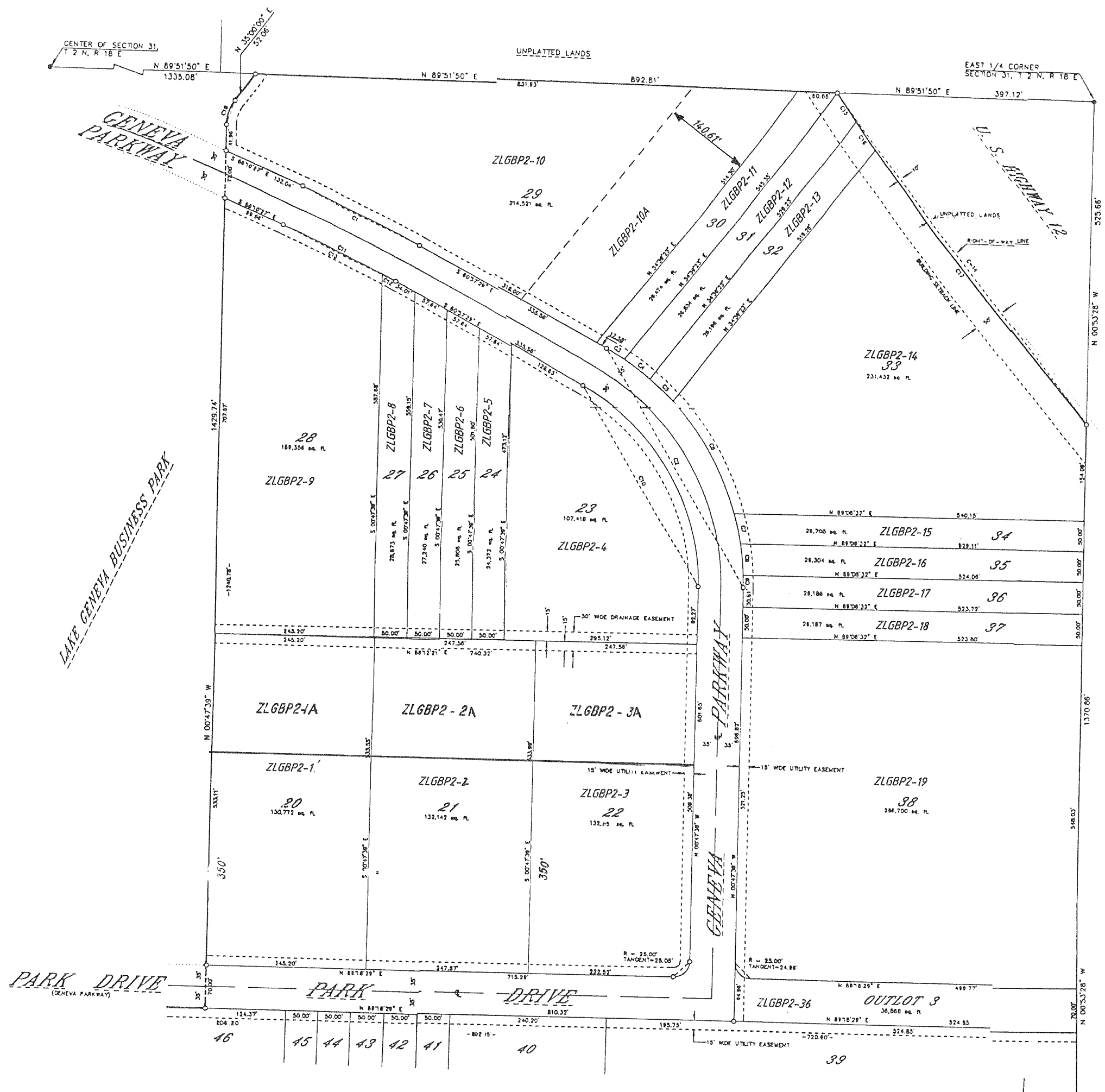


LAKE GENEVA BUSINESS PARK PHASE II

A SUBDIVISION LOCATED IN THE NORTHEAST 1/4 OF THE SOUTHEAST 1/4, THE SOUTHEAST 1/4 OF THE SOUTHEAST 1/4 AND THE SOUTHWEST 1/4 OF THE SOUTHEAST 1/4 OF SECTION 31, T 2 N, R 18 E, CITY OF LAKE GENEVA, WALWORTH COUNTY, WISCONSIN



REVISIONS : 10/02/96
02/16/01

CURVE TABLE

LOT	CURVE	RADIUS	LENGTH	CHORD	BEARING	DELTA	TANGENT BEARINGS
29	C1	2230.36	203.05'	202.98'	N 63°33'58" W	05°12'58"	S 66°10'27" E S 60°57'29" E
30-36	C2	435.26	457.05'	436.34'	S 30°52'34" E	6°09'50"	S 60°57'29" E S 00°47'39" E
30	C3	435.26	32.57'	32.57'	N 58°48'51" W	04°77'16"	S 60°57'29" E S 00°47'39" E
31	C4	435.26	50.06'	50.03'	N 53°22'33" W	06°35'20"	
32	C5	435.26	50.80'	50.57'	N 30°03'53" W	28°42'40"	
33	C6	435.26	202.92'	201.08'	N 46°45'04" W	05°39'36"	
34	C7	435.26	51.23'	51.20'	N 13°20'16" W	06°44'36"	
35	C8	435.26	50.28'	50.25'	N 06°39'23" W	06°37'08"	
36	C9	435.26	19.39'	19.39'	N 02°04'14" W	02°33'10"	
23	C10	365.26	383.54'	366.61'	N 02°04'14" W	02°33'10"	
27-28	C11	2160.36	196.68'	196.16'	N 30°52'34" W	60°09'50"	S 60°57'29" E S 00°47'39" E
27	C12	2160.36	23.56'	23.55'	N 63°33'58" W	05°12'58"	S 66°10'27" E S 60°57'29" E
28	C13	2160.36	173.12'	173.07'	N 63°32'42" W	04°35'30"	
31-33	C14	8814.44	853.14'	852.98'	S 37°41'10" E	04°18'36"	S 35°31'51" E S 39°50'29" E
31	C15	8814.44	53.08'	53.08'	S 33°42'52" E	00°20'42"	
32	C16	8814.44	52.99'	52.99'	S 36°02'53" E	00°20'42"	
33	C17	8814.44	567.07'	556.99'	S 38°01'51" E	03°37'16"	
29	C18	85.38	40.84'	40.18'	N 17°06'10.5" E	35°47'39"	N 00°47'39" W N 35°00'00" E

GRAPHIC SCALE



LEGEND
 ● - 6" SQUARE TOP CONCRETE MONUMENT FOUND
 ○ - 2" DIAMETER BY 30" IRON PIPE, MINIMUM WEIGHT 3.65 LBS./LINEAL FOOT
 * - 1" DIAMETER BY 24" IRON PIPES, MINIMUM WEIGHT 1.13 LBS./LINEAL FOOT, PLACE AT ALL OTHER LOT CORNERS
 () - RECORDED AS