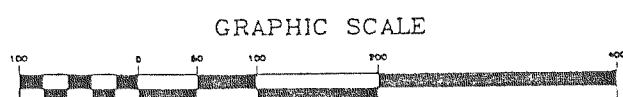


LAKE GENEVA BUSINESS PARK PHASE II

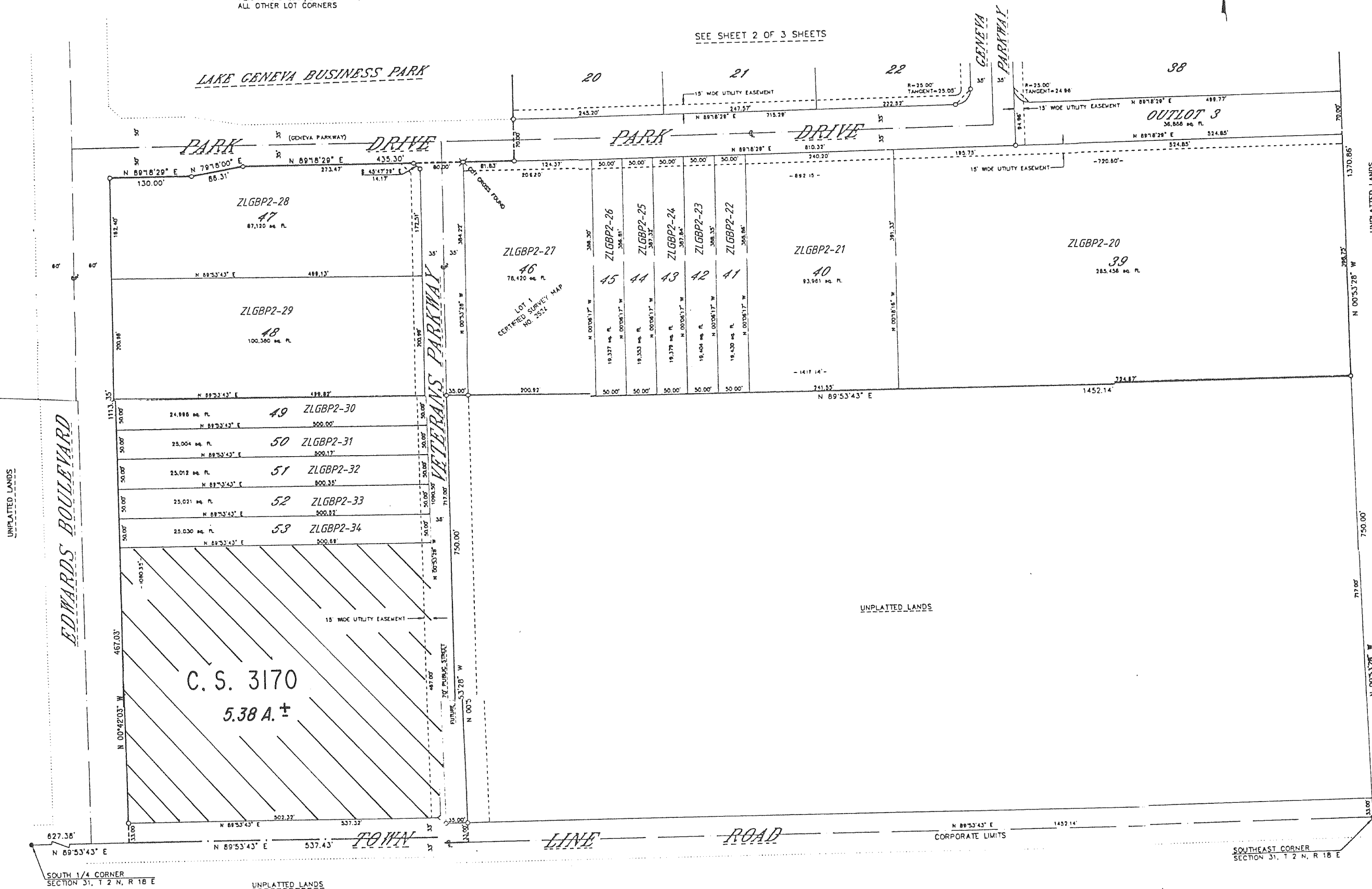
A SUBDIVISION LOCATED IN THE NORTHEAST 1/4 OF THE SOUTHEAST 1/4, THE SOUTHEAST 1/4 OF THE SOUTHEAST 1/4 AND THE SOUTHWEST 1/4 OF THE SOUTHEAST 1/4 OF SECTION 31, T 2 N, R 18 E, CITY OF LAKE GENEVA, WALWORTH COUNTY, WISCONSIN.



LEGEND
 ■ - 6" SQUARE TOP CONCRETE MONUMENT FOUND
 ○ - 2" DIAMETER BY 30" IRON PIPE, MINIMUM WEIGHT 3.85 LBS./LINEAL FOOT
 () - RECORDED AS
 ○ - 1" DIAMETER BY 24" IRON PIPES, MINIMUM WEIGHT 1.13 LBS./LINEAL FOOT, PLACED AT ALL OTHER LOT CORNERS

There are no objections to this plat with respects to Secs 236 15, 236 16, 236 20 and 236 21 (1) and (2), Wis Stats., Hy 33 Wis Admin Code or by the County Planning Agency as provided by Sec 236 12 (6), Wis Stats
 Certified this 24th Day of November, 1995
James H. Stow
 Department of Agriculture, Trade & Consumer Protection

SEE SHEET 2 OF 3 SHEETS



REVISIONS : 01/03/00

