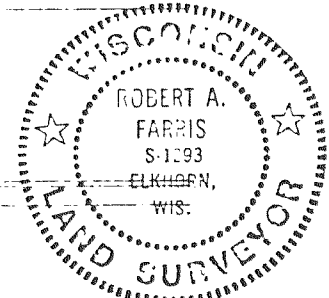
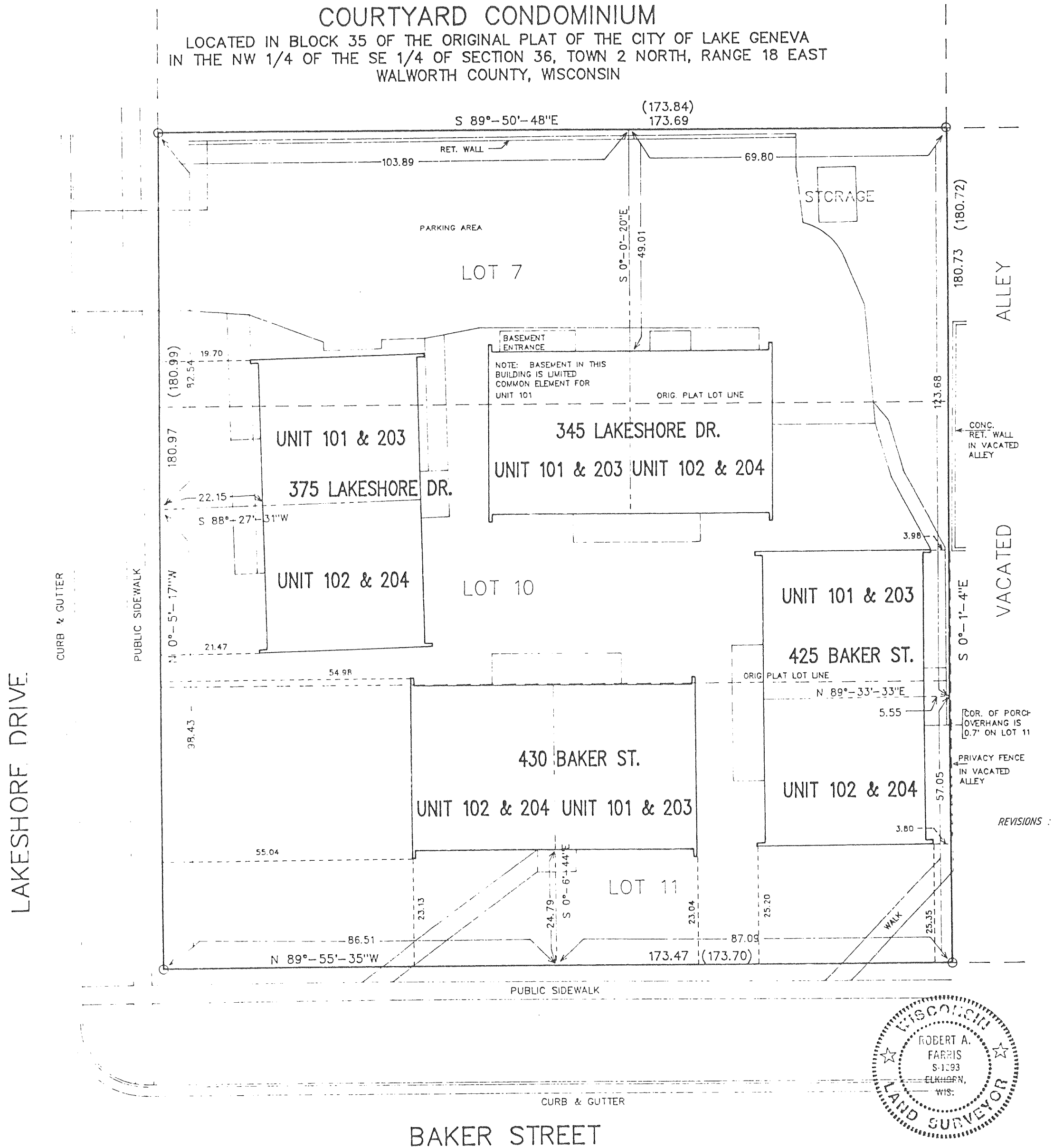


COURTYARD CONDOMINIUM

LOCATED IN BLOCK 35 OF THE ORIGINAL PLAT OF THE CITY OF LAKE GENEVA
IN THE NW 1/4 OF THE SE 1/4 OF SECTION 36, TOWN 2 NORTH, RANGE 18 EAST
WALWORTH COUNTY, WISCONSIN



BAKER STREET

LEGAL DESCRIPTION OF CONDOMINIUM: LOTS 7, 10, & 11 OF BLOCK 35 OF THE ORIGINAL PLAT OF THE CITY OF LAKE GENEVA, WALWORTH COUNTY, WISCONSIN. THE CONDOMINIUM DESCRIBED DOES NOT INCLUDE ANY PART OF THE VACATED ALLEY ABUTTING THE ABOVE DESCRIBED LOTS ALONG THEIR EASTERLY BOUNDARY.

NOTE: TYPICAL UNIT LEGAL DESCRIPTIONS WILL BE: "430 BAKER ST. UNIT 102 COURTYARD CONDOMINIUM"
"375 LAKE SHORE DR. UNIT 204 COURTYARD CONDOMINIUM"
ETC.

I HEREBY CERTIFY THAT THIS PLAT IS A CORRECT REPRESENTATION OF THE CONDOMINIUM DESCRIBED AND THE IDENTIFICATION AND LOCATION OF EACH UNIT AND THE COMMON ELEMENTS CAN BE DETERMINED FROM THE PLAT.

Robert A. Farris
ROBERT A. FARRIS RLS

NOTE: SEE FLOORPLAN SHEETS FOR UNIT BOUNDARY LINES.
NOTE: ORIGINAL PLAT LOT DIMENSIONS WERE 60' X 172'.
NOTE: (XXX) DIMENSIONS SHOWN ON PLAT OF SURVEY OF BLOCK 35 BY SURVEYOR GEORGE DUNHAM NOV 23, 1954 WHICH WAS ACCEPTED AS A CORRECT MONUMENTATION OF SAID BLOCK 35 AND THE BEST EVIDENCE OF THE ORIGINAL LOT LINES IN SAID BLOCK.
NOTE: BEARINGS ARE MEASURED RELATIVE TO THE WEST LINE OF WELLS STREET WHICH WAS ASSIGNED BEARING NORTH AS SHOWN ON OTHER PLATS OF RECORD
O = IRON PIPE SURVEY STAKE FOUND

