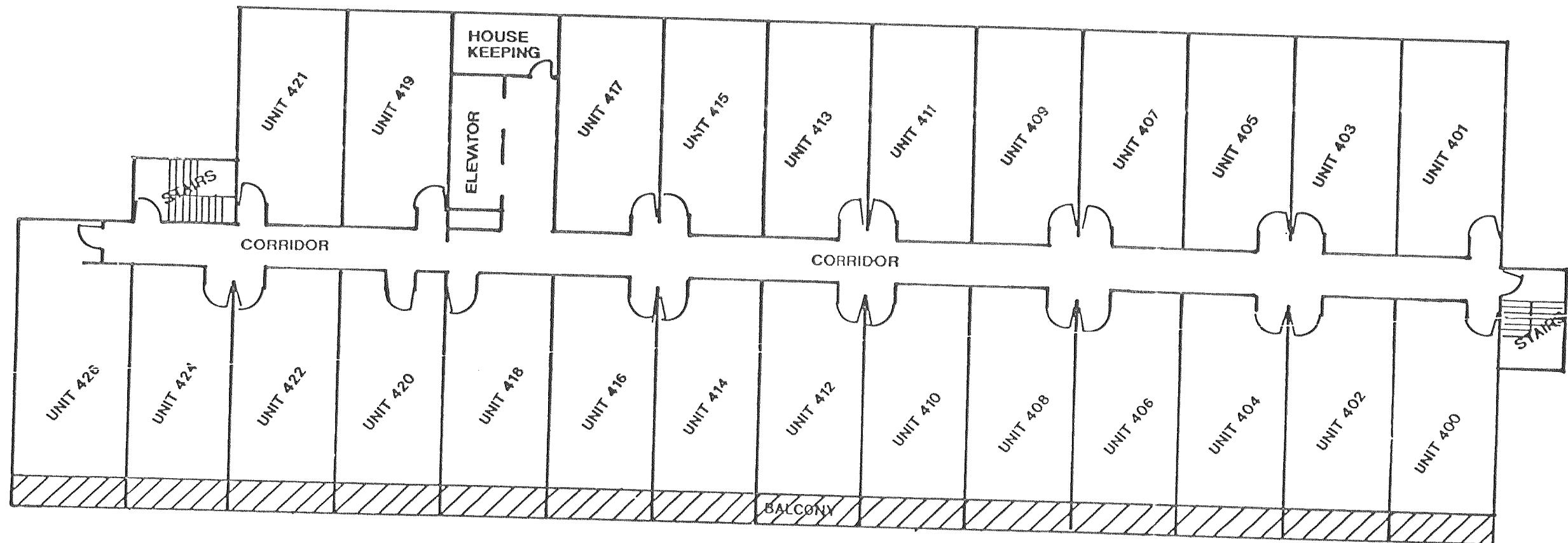


"HARBOR COVE CONDOMINIUM"  
A CONDOMINIUM PLAT

A TRACT OF LAND BEING A PART OF THE SOUTHEAST 1/4 OF SECTION 36,  
TOWN 2 NORTH, RANGE 17 EAST, IN THE CITY OF LAKE GENEVA, COUNTY  
OF WALWORTH, STATE OF WISCONSIN.



4TH FLOOR PLAN  
SCALE: 1/16" = 1'

REVISIONS :