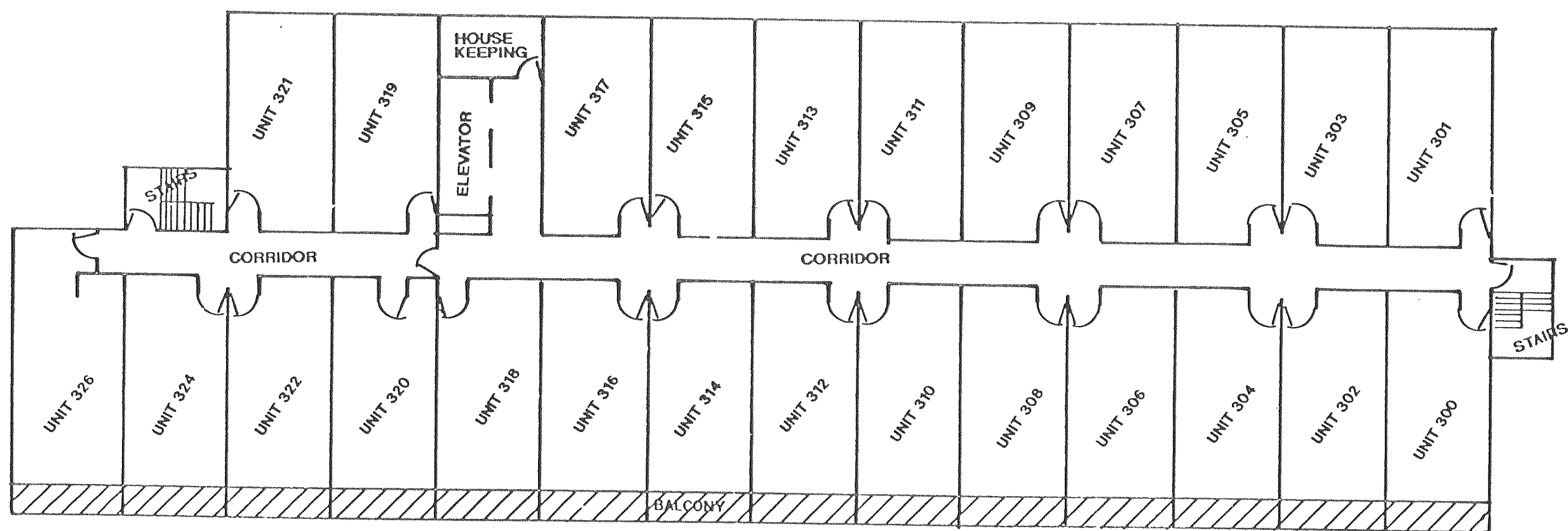


"HARBOR COVE CONDOMINIUM"
A CONDOMINIUM PLAT

A TRACT OF LAND BEING A PART OF THE SOUTHEAST 1/4 OF SECTION 36,
TOWN 2 NORTH, RANGE 17 EAST, IN THE CITY OF LAKE GENEVA, COUNTY
OF WALWORTH, STATE OF WISCONSIN.



3RD FLOOR PLAN
SCALE: 1/16" = 1'

REVISIONS :