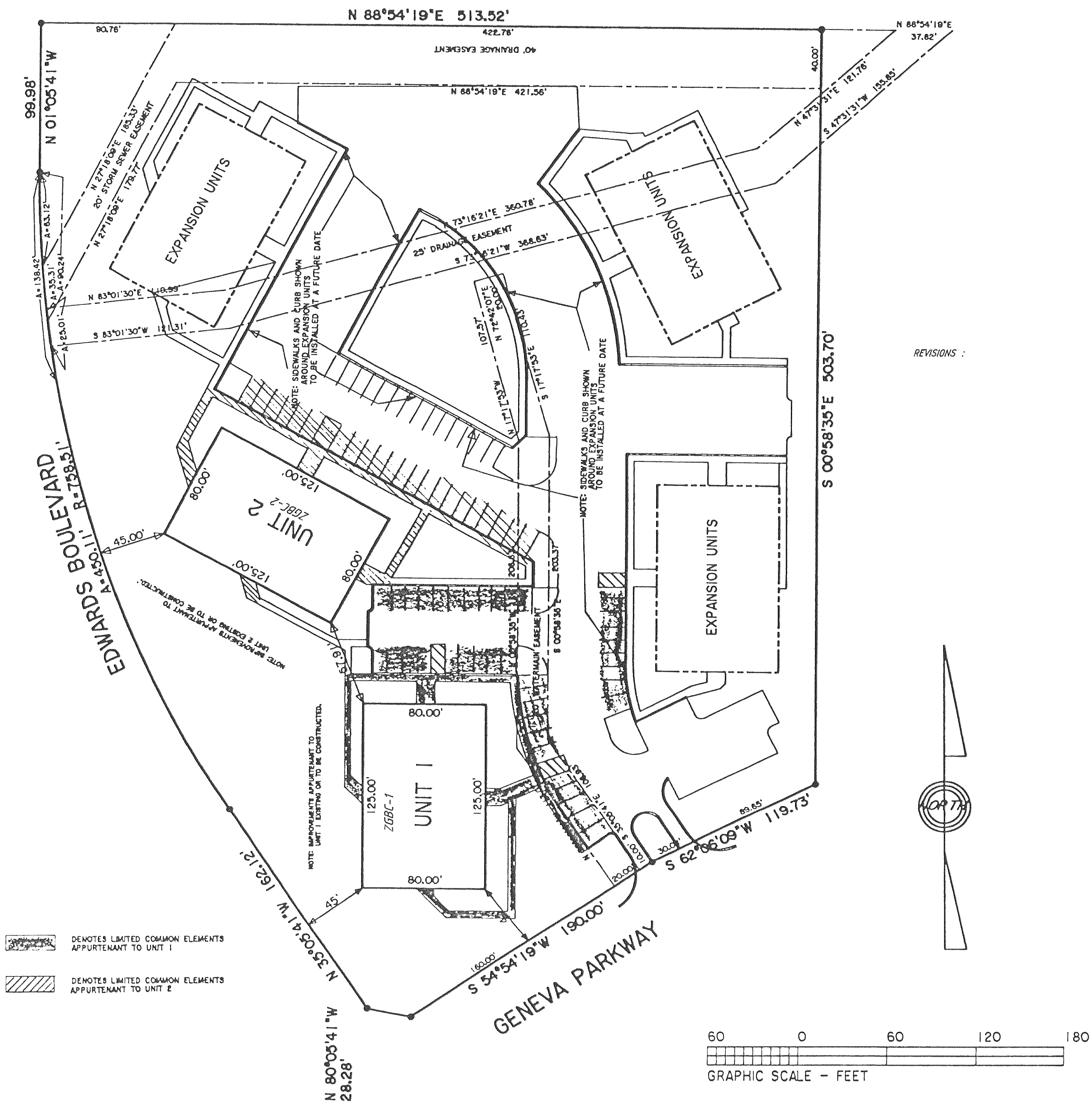


**"GENEVA BUSINESS CENTRE"  
"CONDOMINIUM"  
A CONDOMINIUM PLAT  
1ST AMENDMENT**

**128A**

LOT 1 OF "GENEVA BUSINESS PARK", LOCATED IN THE SOUTHEAST 1/4 OF THE NORTHWEST 1/4, THE SOUTHWEST 1/4 OF THE NORTHWEST 1/4, THE NORTHWEST 1/4 OF THE SOUTHEAST 1/4, THE NORTHEAST 1/4 OF THE SOUTHEAST 1/4 AND THE SOUTHWEST 1/4 OF THE SOUTHEAST 1/4 OF SECTION 31, TOWN 2 NORTH, RANGE 18 EAST, IN THE CITY OF LAKE GENEVA, COUNTY OF WALWORTH, STATE OF WISCONSIN.



**NOTE:** The common elements of the Condominium consist of all portion of the Condominium shown other than the units and as otherwise described in the Declaration. Certain portions of the common elements are limited common elements, as designated on this plat or described in the Declaration.