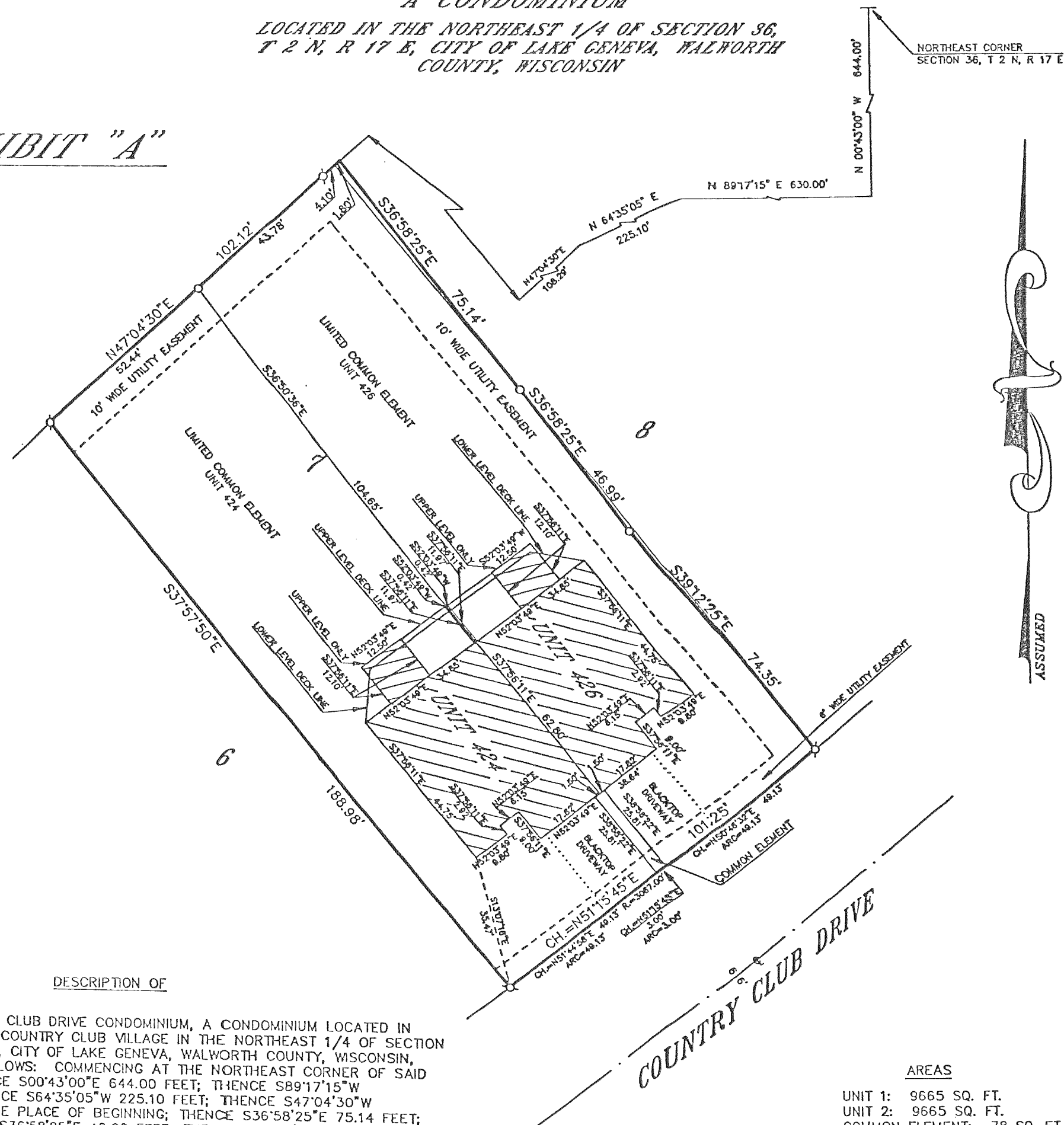


424-426 COUNTRY CLUB DRIVE CONDOMINIUM

A CONDOMINIUM

LOCATED IN THE NORTHEAST 1/4 OF SECTION 36,
T 2 N, R 17 E, CITY OF LAKE GENEVA, WALWORTH
COUNTY, WISCONSIN

EXHIBIT "A"



DESCRIPTION OF

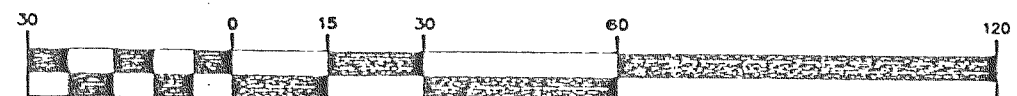
424-426 COUNTRY CLUB DRIVE CONDOMINIUM, A CONDOMINIUM LOCATED IN LOTS 7 AND 8 OF COUNTRY CLUB VILLAGE IN THE NORTHEAST 1/4 OF SECTION 36, T 2 N, R 17 E, CITY OF LAKE GENEVA, WALWORTH COUNTY, WISCONSIN, DESCRIBED AS FOLLOWS: COMMENCING AT THE NORTHEAST CORNER OF SAID SECTION 36, THENCE S00°43'00"E 644.00 FEET; THENCE S89°17'15"W 630.00 FEET; THENCE S64°35'05"W 225.10 FEET; THENCE S47°04'30"W 108.29 FEET TO THE PLACE OF BEGINNING; THENCE S36°58'25"E 75.14 FEET; THENCE CONTINUE S36°58'25"E 46.99 FEET; THENCE S39°12'25"E 74.35 FEET; THENCE ALONG THE ARC OF A CURVE TO THE RIGHT 101.26 FEET, THE RADIUS BEING 3067.00 FEET AND THE CHORD BEARING S51°15'45"W 101.25 FEET; THENCE N37°57'50"W 188.98 FEET; THENCE N47°04'30"E 102.12 FEET TO THE PLACE OF BEGINNING.

NOTE: ANY EXISTING PHYSICAL BOUNDARIES OF ANY UNIT OR COMMON ELEMENT THAT ARE IN SUBSTANTIAL CONFORMITY WITH THE CONDOMINIUM PLAT SHALL BE CONCLUSIVELY PRESUMED TO BE THE BOUNDARIES REGARDLESS OF THE SHIFTING, SETTLEMENT OR LATERAL MOVEMENT OF ANY BUILDING AND REGARDLESS OF MINOR VARIATIONS BETWEEN THE PHYSICAL BOUNDARIES AS DESCRIBED IN THE DECLARATION OR SHOWN ON THE CONDOMINIUM PLAT AND THE EXISTING PHYSICAL BOUNDARIES OF ANY SUCH UNIT OR COMMON ELEMENT.

AREAS

UNIT 1: 9665 SQ. FT.
UNIT 2: 9665 SQ. FT.
COMMON ELEMENT: 78 SQ. FT.
NOTE: UNIT AREAS INCLUDE LIMITED COMMON ELEMENTS

GRAPHIC SCALE



(IN FEET)

1 inch = 30 ft.

LEGEND

⊘-IRON PIPE FOUND
⊘-IRON ROD FOUND
⊘-CONCRETE MONUMENT FOUND
○-IRON PIPE PLACED
()-RECORDED AS