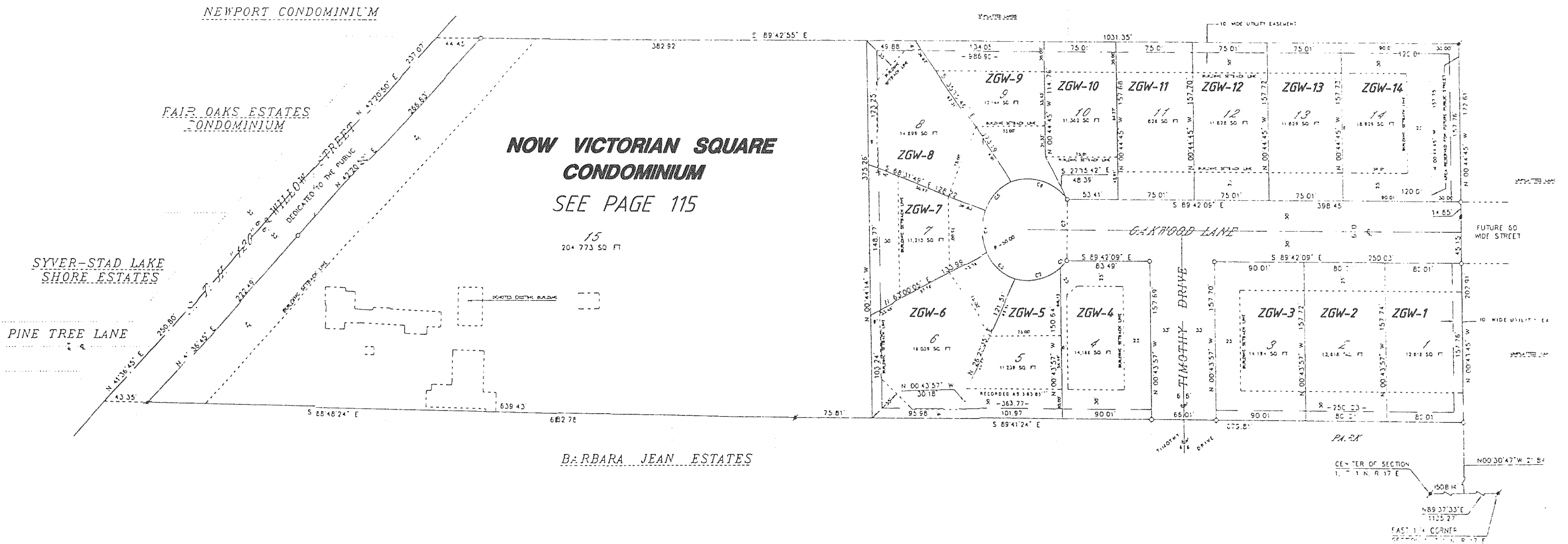
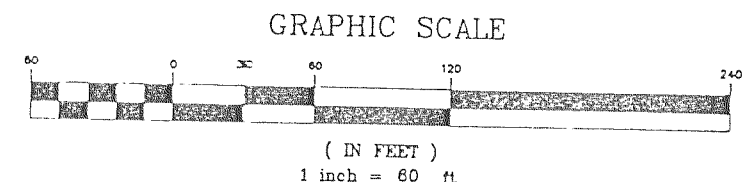
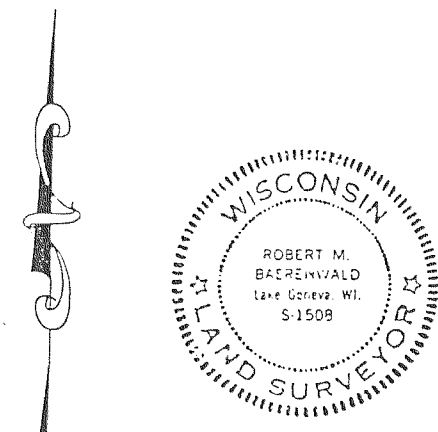
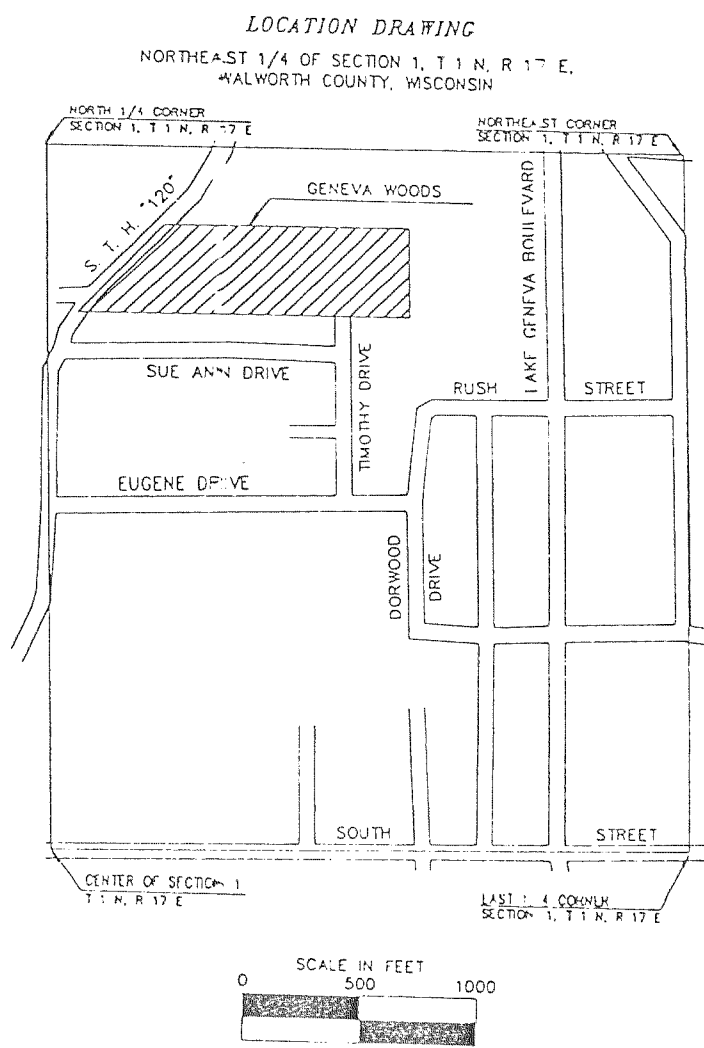


GENEVA WOODS

LOCATED IN THE NORTHWEST 1/4 OF THE NORTHWEST 1/4 AND THE
NORTHEAST 1/4 OF THE NORTHWEST 1/4 OF SECTION 1, T 1 N,
R 17 E, CITY OF LAKE GENEVA, WALWORTH COUNTY, WISCONSIN



LOT	CURVE	RADIUS	LENGTH	CHORD	BEARING	DELTA	TANGENT BEARINGS
4	C1	50.00'	9.52'	9.50'	N 42°37'13" E	10°54'20"	
5	C2	50.00'	49.61'	47.60'	N 76°29'43" E	56°50'40"	
6	C3	50.00'	41.96'	40.74'	S 51°02'26" E	48°05'02"	
7	C4	50.00'	42.30'	41.05'	S 02°45'52" E	48°28'06"	
8	C5	50.00'	41.85'	40.64'	S 45°26'52" W	47°57'22"	
9	C6	50.00'	64.58'	60.18'	N 73°34'24" W	74°00'06"	
4-9	C7	50.00'	249.82'	60.00'	N 00°17'51" E	86°15'36"	S37°10'03"W S36°34'21"E



- LEGEND
- - 6" SQUARE TOP CONCRETE MONUMENT FOUND
 - - 6" DIAMETER CONCRETE MONUMENT FOUND
 - - 2" DIAMETER BY 30" IRON PIPE PLATE, MINIMUM WEIGHT 3.65 LBS./LINEAL FOOT
 - - 1" DIAMETER BY 24" IRON PIPES, MINIMUM WEIGHT 1.13 LBS./LINEAL FOOT PLACED AT ALL OTHER CORNERS.

REVISIONS : 03/31/94

BEARING REFERENCE: BEARINGS ARE REFERENCED TO THE WISCONSIN COORDINATE SYSTEM, SOUTH ZONE - THE SOUTH LINE OF THE NORTHEAST 1/4 OF SECTION 1, T 1 N, R 17 E. *AS ASSUMED N89°37'33"E

TOTAL AREA: 10.2755 ACRES

NOTE: BEARINGS ARE COMPUTED TO THE NEAREST SECOND AND DISTANCES ARE COMPUTED TO THE NEAREST 0.01 FOOT