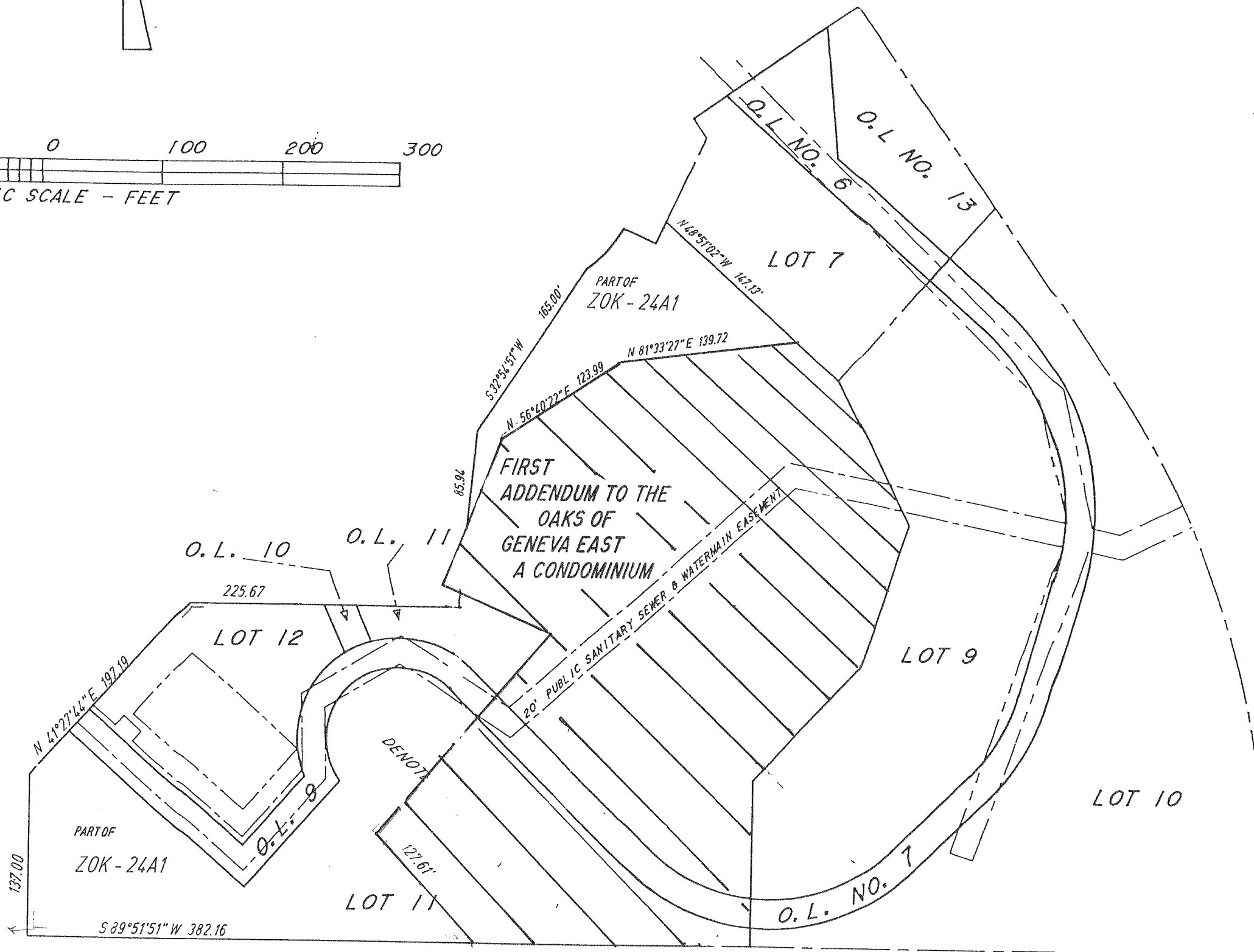
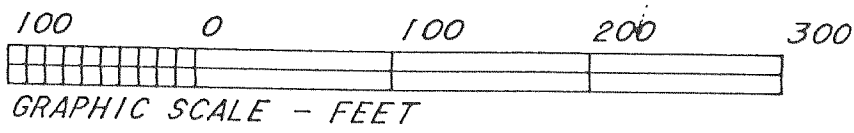


THE OAKS OF GENEVA EAST CONDOMINIUM PLAT



(ADDITIONAL EXPANSION PROPERTY)
BEING A PART OF LOTS 8, 11 AND 12 AND OUTLOTS 6, 7, 8, 9, 10, 11,
12 AND 13, OF GENEVA EAST A RECORDED SUBDIVISION, BEING A REDIVI-
SION OF LOT 1 OF CERTIFIED SURVEY MAP NO. 2010, BEING A PART OF
THE NORTHEAST 1/4 OF THE SOUTHWEST 1/4 AND THE NORTHWEST 1/4 OF
THE SOUTHEAST 1/4 OF SECTION 31, TOWN 2 NORTH, RANGE 18 EAST, IN
THE CITY OF LAKE GENEVA, COUNTY OF WALWORTH, STATE OF WISCONSIN.



REVISIONS 12/16/99
12/22/99