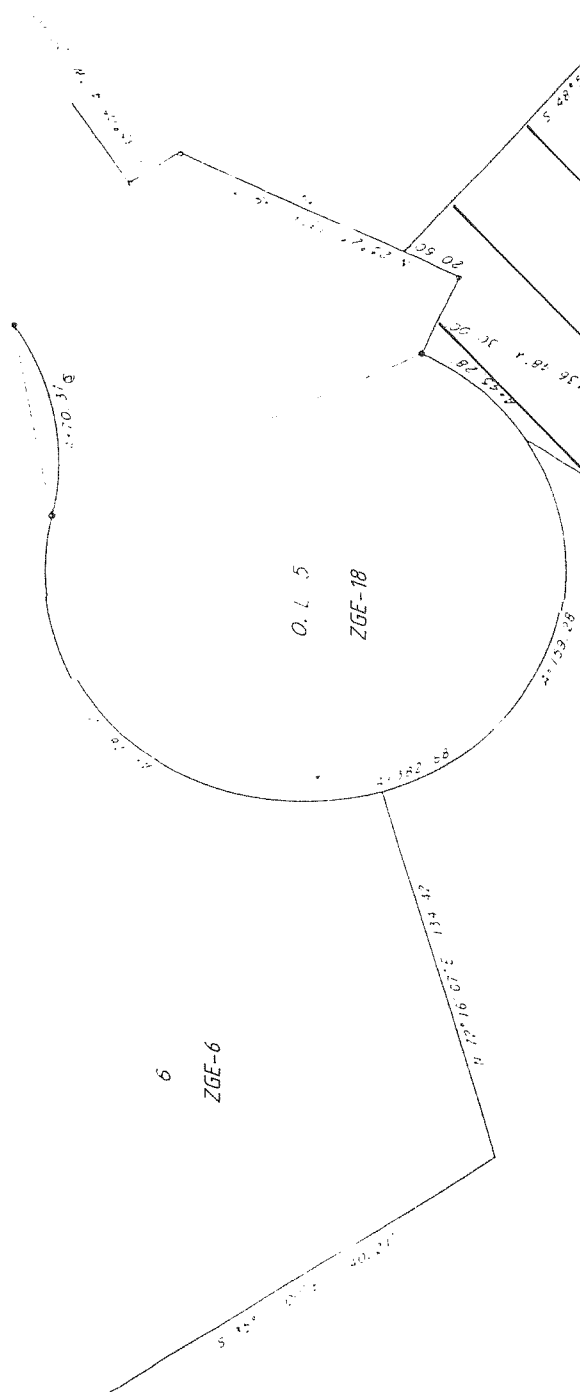


GENEVA EAST  
COUNTY OF WALWORTH, STATE OF WISCONSIN  
"DETAIL A"

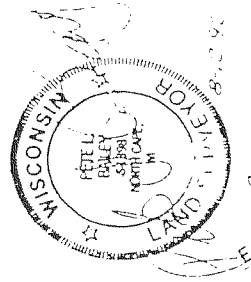
CITY OF LAKE GENEVA



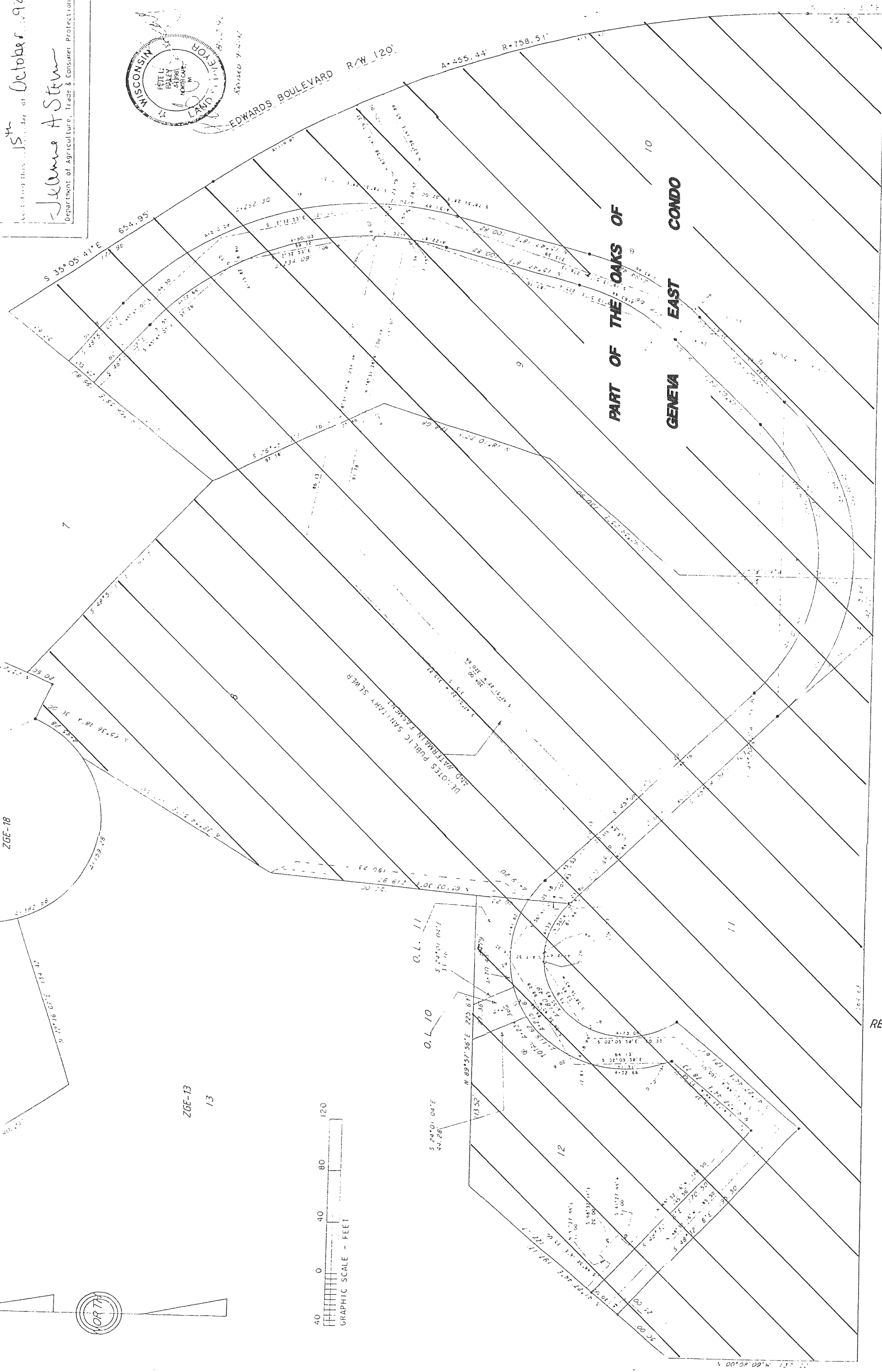
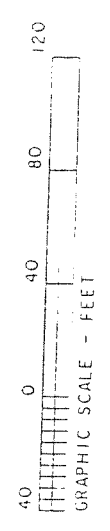
6  
ZGE-6

ZGE-13  
13

There are no objections to this plan in respect to  
Secs. 236, 237, 238, 239 and 240 of the County Planning Code,  
as amended, or by the County Planning Board.  
Accepted this 15th day of October 1992  
James A. Steen  
Department of Agriculture, Trade & Consumer Protection



EDWARDS BOULEVARD R/W 120'  
A=55.44' R=758.51'



REVISIONS : 04/29/93

O.L. 12

S 85° 51' 51" W 1340.14'