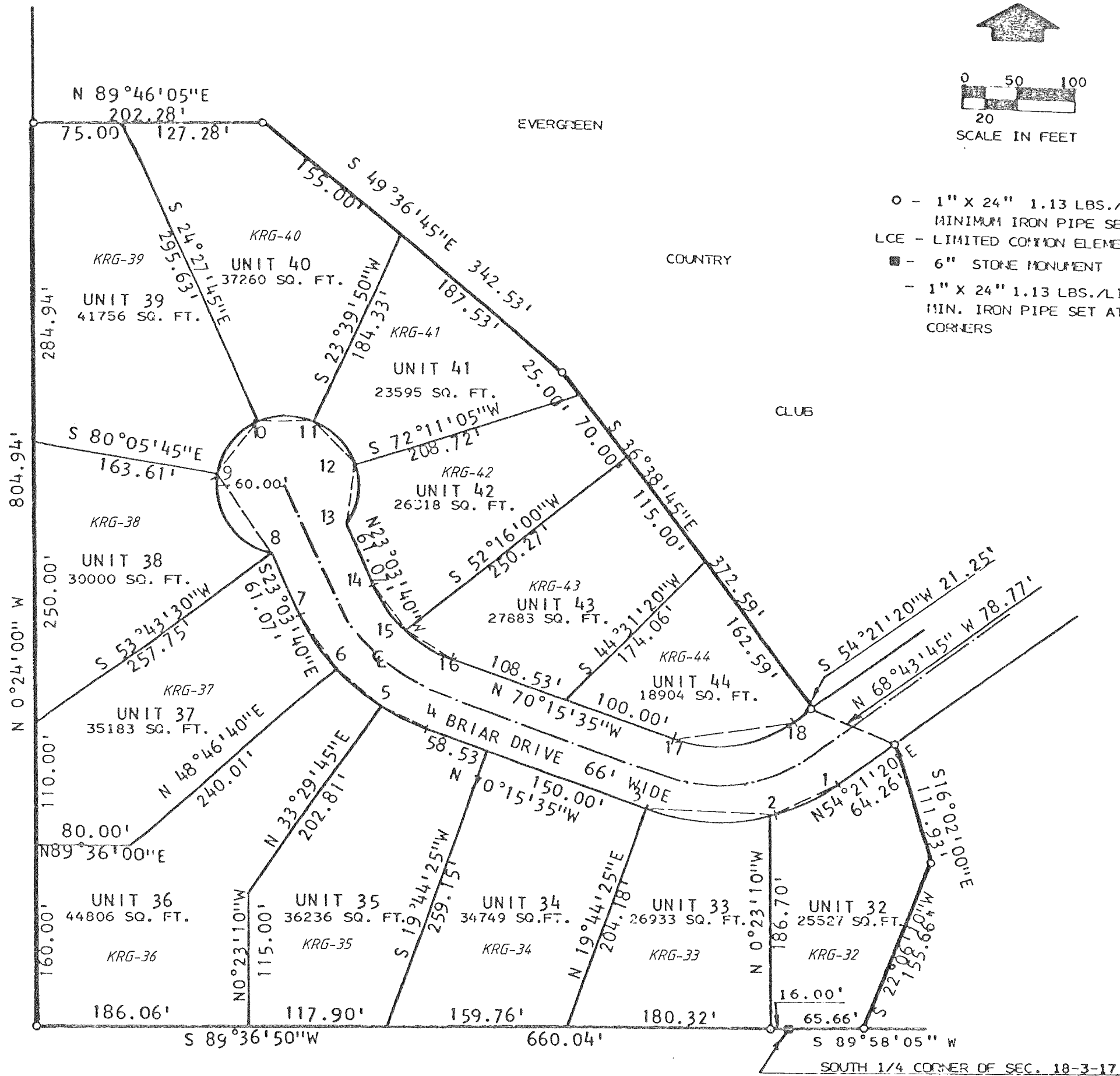
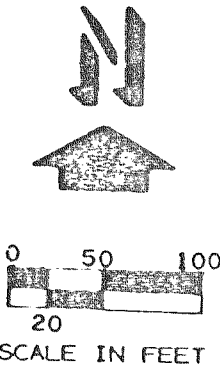


# ROLLING GREEN COUNTRY ESTATES

A CONDOMINIUM

LOCATED IN THE SOUTHEAST 1/4 AND THE SOUTHWEST 1/4 OF SECTION  
18, T3N, R17E, TOWN OF LAFAYETTE, WALWORTH COUNTY, WISCONSIN.



- - 1" X 24" 1.13 LBS./LIN. FT. MINIMUM IRON PIPE SET
- LCE - LIMITED COMMON ELEMENT
- - 6" STONE MONUMENT
- 1" X 24" 1.13 LBS./LIN. FT. MIN. IRON PIPE SET AT ALL OTHER LOT CORNERS

CURVE DATA

CURVE NO.	UNIT	CHORD		RAD.	ARC	CENTRAL ANGLE
		BEARING	LENGTH			
1-2	32	S 64°31'40"W	64.64'	183.00'	64.98'	20°20'40"
2-3	33	N 87°46'45"W	110.18'			"
4-5	35	N 63°22'55"W	43.83'	1		"
5-6	36	N 48°35'15"W	50.41'	183.00'	50.00'	15°50'00"
6-7	37	N 31°52'00"W	56.03'	183.00'	56.25'	17°36'40"
8-9	38	N 34°53'40"W	34.55'	60.00'	93.83'	39°35'50"
9-10	39	N 37°43'15"E	56.00'	60.00'	58.26'	55°37'55"
10-11	40	N 39°36'05"E	48.93'	60.00'	50.40'	48°07'40"
11-12	41	S 42°04'30"E	49.31'	6	50.81'	43°31'15"
12-13	42	S 07°52'45"W	52.03'	60.00'	53.21'	51°23'15"
14-15	42	S 34°19'20"E	45.70'	117.00'	46.00'	22°31'25"
15-16	43	S 57°55'20"E	50.00'	117.00'	50.39'	24°40'30"
17-18	44	N 02°02'50"E	108.75'	117.00'	113.10'	55°23'05"
1-3	32-33	S 82°02'50"W	170.09'	183.00'	176.90'	55°23'05"
4-7	35-37	N 46°39'36"W	146.53'	183.00'	150.75'	47°11'59"
14-16	42-43	N 46°39'36"W	93.68'	117.00'	96.38'	47°11'59"