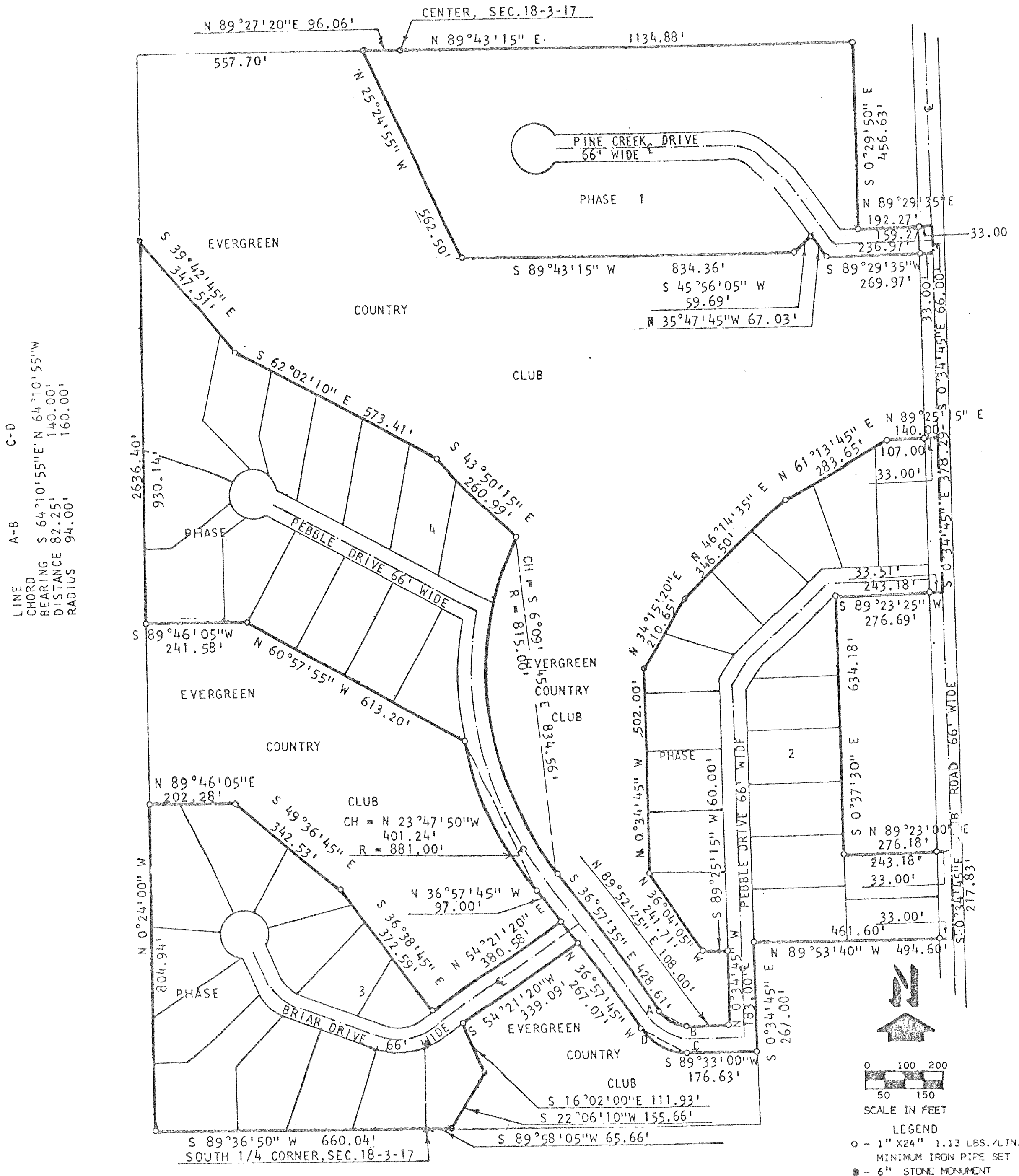


ROLLING GREEN COUNTRY ESTATES

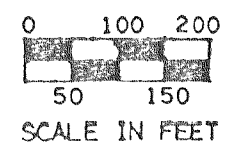
74 A



LINE A-B C-D

CHORD BEARING $S 64^{\circ}10'55'' E$ $N 64^{\circ}10'55'' W$
 DISTANCE 82.25' 140.00'
 RADIUS 94.00' 160.00'

SOUTH 1/4 CORNER, SEC. 18-3-17



LEGEND
 ○ - 1" X 24" 1.13 LBS./LN. FT. MINIMUM IRON PIPE SET
 ■ - 6" STONE MONUMENT