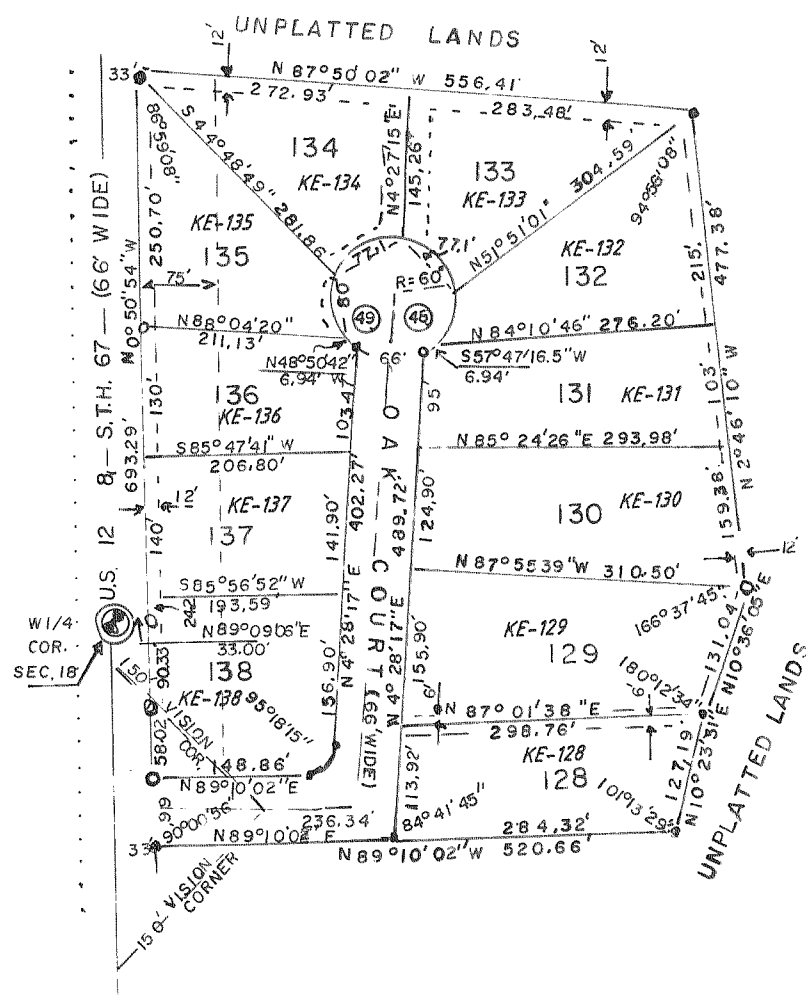


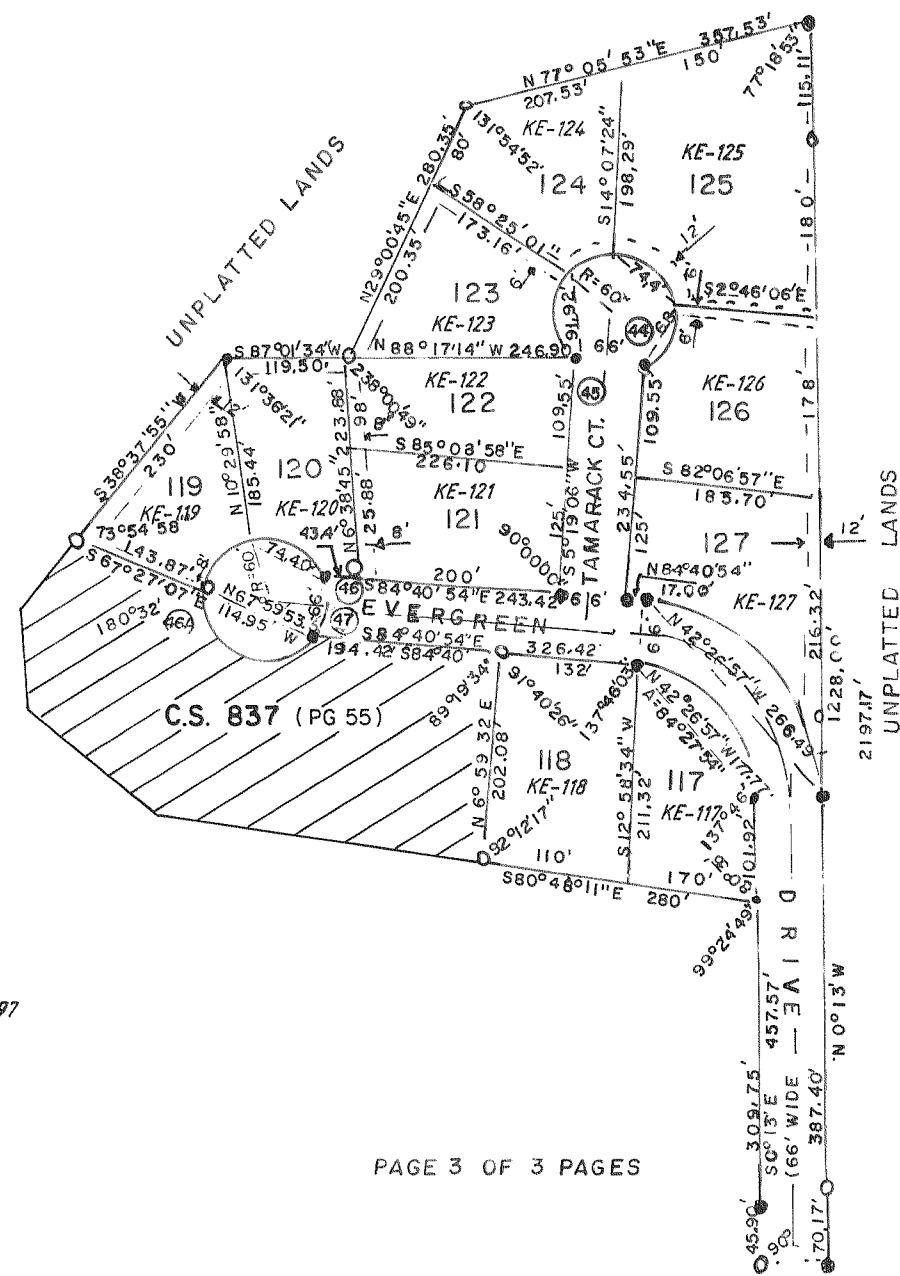
EVERGREEN ESTATES

CONTINUED — SEE PAGES 49 AND 50.



CURVE TABLE FOR PAGE 3

CURVE NO.	LOT NO.	RADIUS	CHORD LENGTH	CHORD BEARING	CENTRAL ANGLE	TANGENT BEARING
44-45		60.00'	66.00'	N84°40'54"W	293°15'58"	N81°57'05"E
126			68.83'	N26°57'05"E	70°00'00"	
125			74.40'	N46°21'54.5"W	76°37'59"	
124			47.50'	N72°00'06.5"E	46°37'59"	
123			91.92'	S1°18'53"E	100°00'00"	
46-47		60.00'	66.00'	N8°19'06"E	293°15'58"	N28°02'55"W
119			68.83'	S40°19'06"W	70°00'00"	
120			74.40'	N66°21'54.5"W	76°37'59"	
EXTER		60.00'	114.95'	N67°59'53.5"W	146°37'59"	
48-49		60.00'	66.00'	N85°31'43"W	293°15'58"	N61°06'16"E
131			6.94'	S57°47'16.5"W	6°37'59"	
132			60.00'	N24°28'17"E	60°00'00"	
133			77.135'	N45°31'43"W	80°00'00"	
134			77.135'	N54°28'17"E	80°00'00"	
135			60.00'	N15°31'43"W	60°00'00"	
136			6.94'	N48°50'42.5"W	6°37'59"	
46-46A			114.948'	N78°38'05.5"E	146°37'59"	
34-35A			119.38'	N62°26'39.5"E	168°22'39"	



REVISIONS : 04/30/97