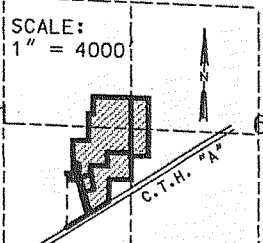


Certified Survey Map  
# 3721

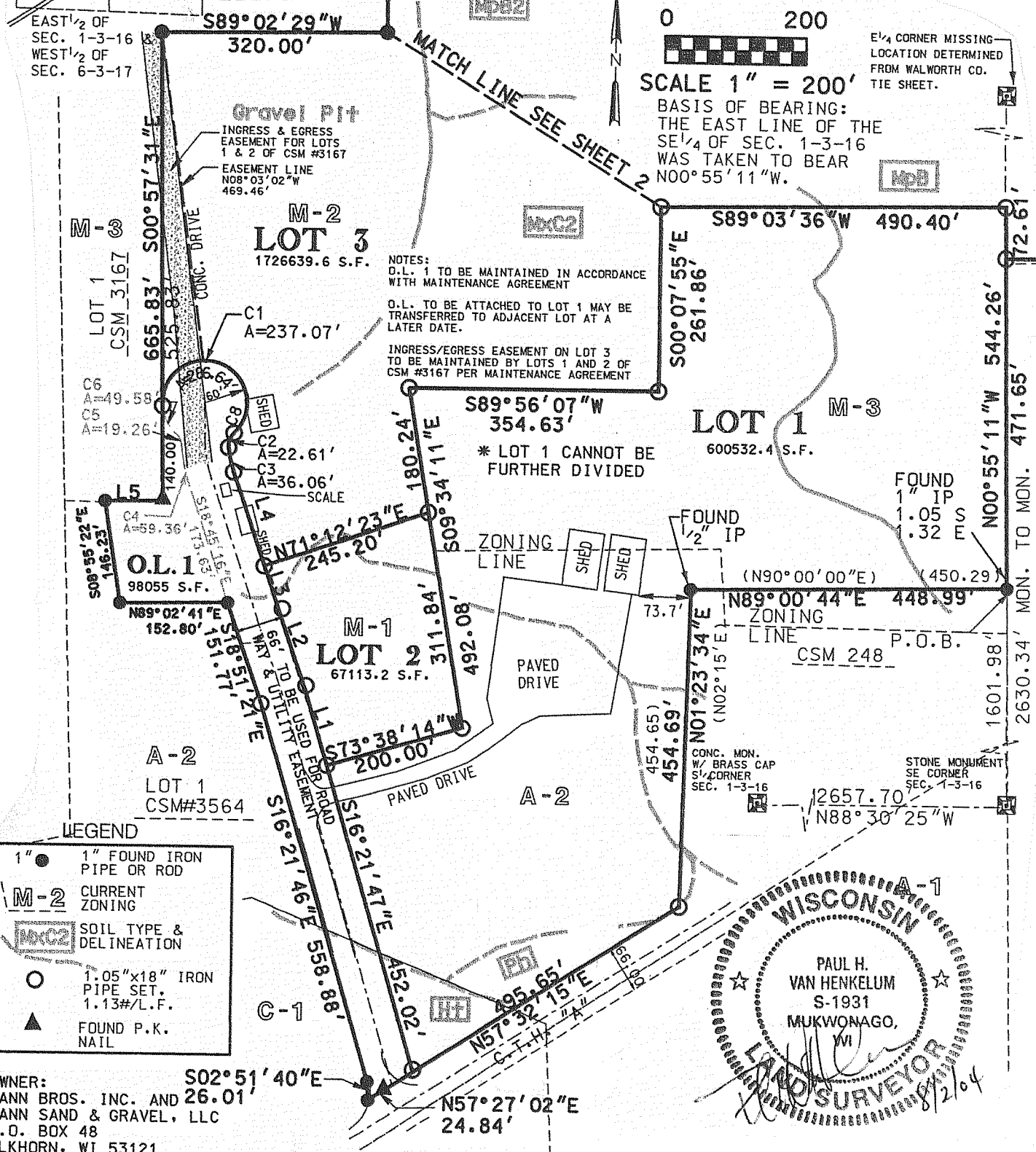
BEING A REDIVISION OF LOT 2 OF C.S.M. #3564 BEING IN THE SE<sup>1</sup>/<sub>4</sub> OF THE NE<sup>1</sup>/<sub>4</sub> AND PART OF THE NE<sup>1</sup>/<sub>4</sub> AND SE<sup>1</sup>/<sub>4</sub> OF THE SE<sup>1</sup>/<sub>4</sub> OF SECTION 1, TOWN 3 NORTH, RANGE 16 EAST, TOWN OF SUGAR CREEK AND ADDITIONAL LANDS IN PART OF THE SW<sup>1</sup>/<sub>4</sub> OF THE NW<sup>1</sup>/<sub>4</sub> AND NW<sup>1</sup>/<sub>4</sub> OF THE SW<sup>1</sup>/<sub>4</sub> OF SECTION 6, TOWN 3 NORTH, RANGE 17 EAST, TOWN OF LA FAYETTE, WALWORTH COUNTY, WISCONSIN

LOCATION MAP

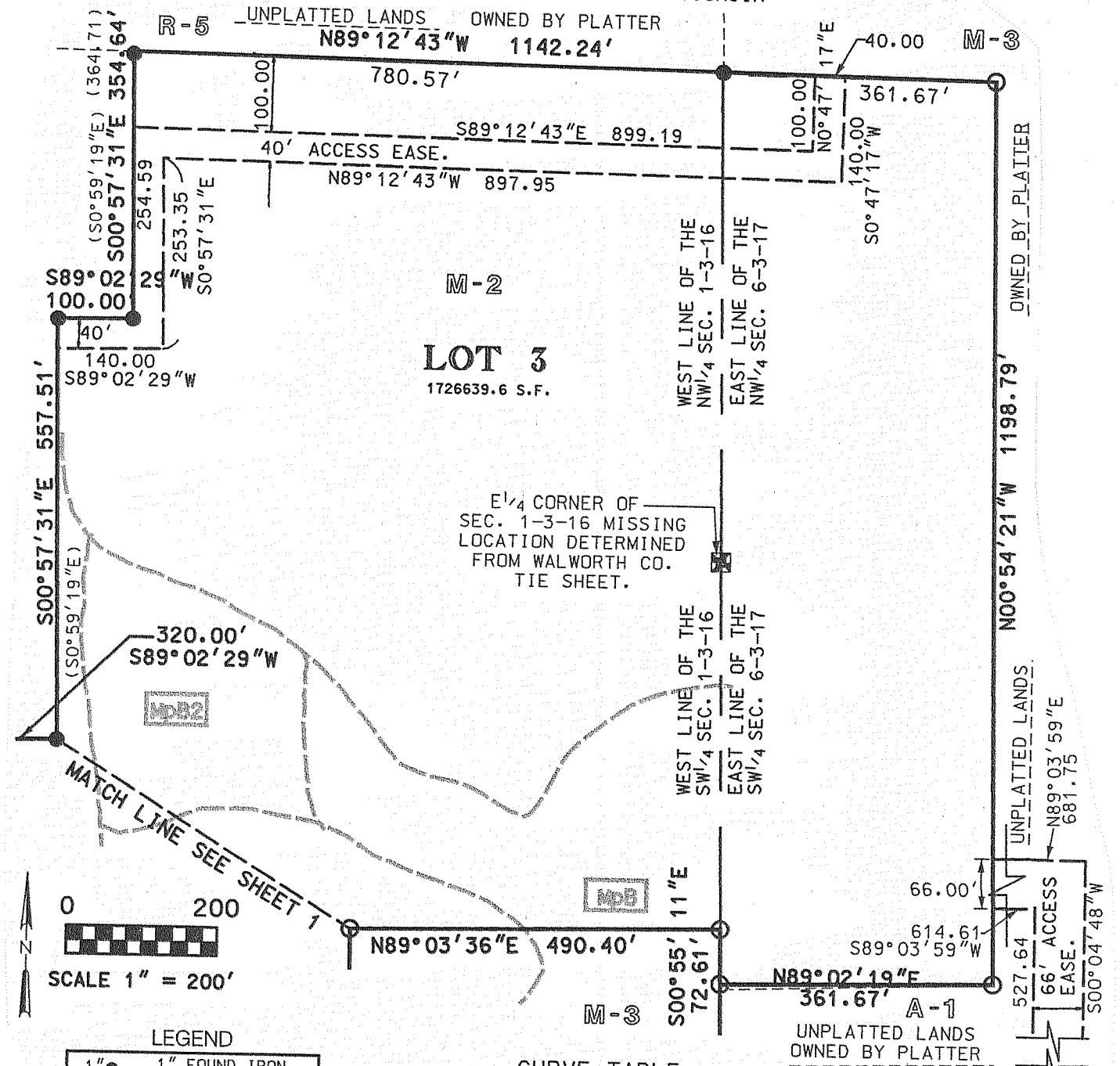


SURVEYOR:  
RSV ENGINEERING, INC  
801 MAIN ST.  
MUKWONAGO, WI 53149  
262-363-2004

SCALE 1" = 200'  
BASIS OF BEARING:  
THE EAST LINE OF THE  
SE<sup>1</sup>/<sub>4</sub> OF SEC. 1-3-16  
WAS TAKEN TO BEAR  
N00°55'11"W.



BEING A REDIVISION OF LOT 2 OF C.S.M. #3564 BEING IN THE SE<sup>1</sup>/<sub>4</sub> OF THE NE<sup>1</sup>/<sub>4</sub> AND PART OF THE NE<sup>1</sup>/<sub>4</sub> AND SE<sup>1</sup>/<sub>4</sub> OF THE SE<sup>1</sup>/<sub>4</sub> OF SECTION 1, TOWN 3 NORTH, RANGE 16 EAST, TOWN OF SUGAR CREEK AND ADDITIONAL LANDS IN PART OF THE SW<sup>1</sup>/<sub>4</sub> OF THE NW<sup>1</sup>/<sub>4</sub> AND NW<sup>1</sup>/<sub>4</sub> OF THE SW<sup>1</sup>/<sub>4</sub> OF SECTION 6, TOWN 3 NORTH, RANGE 17 EAST, TOWN OF LA FAYETTE, WALWORTH COUNTY, WISCONSIN



LEGEND

- 1" ● 1" FOUND IRON PIPE OR ROD
- M-2 CURRENT ZONING
- FsB SOIL TYPE & DELINEATION
- 1.05"x18" IRON PIPE SET, 1.13#/L.F.
- ▲ FOUND P.K. NAIL

CURVE TABLE

NO.	ARC	DELTA	RADIUS	CHORD	BEARING
1	237.07'	226°22'59"	60.00'	110.30'	S67°46'01"E
2	22.61'	51°48'26"	25.00'	21.84'	S19°31'15"W
3	36.06'	12°22'18"	167.00'	35.99'	S12°34'07"E
4	59.36'	14°35'50"	233.00'	59.20'	S11°27'21"E
5	19.26'	44°08'36"	25.00'	18.79'	S26°13'43"E
6	49.58'	47°20'30"	60.00'	48.18'	N24°37'46"W
7	62.12'	17°47'45"	200.00'	61.87'	S09°51'24"E
8	286.64'	273°43'29"	60.00'	82.05'	S88°33'44"W

LINE TABLE

NO.	DISTANCE	BEARING
L1	111.30	N16°21'46"W
L2	154.58	N18°50'40"W
L3	33.54	N18°45'16"W
L4	140.04	S18°45'16"E
L5	81.84	S89°10'03"W
L6	48.11	S00°57'31"E

WISCONSIN  
PAUL H. VAN HENKELUM  
S-1931  
MUKWONAGO,  
WI  
LAND SURVEYOR  
8/2/04