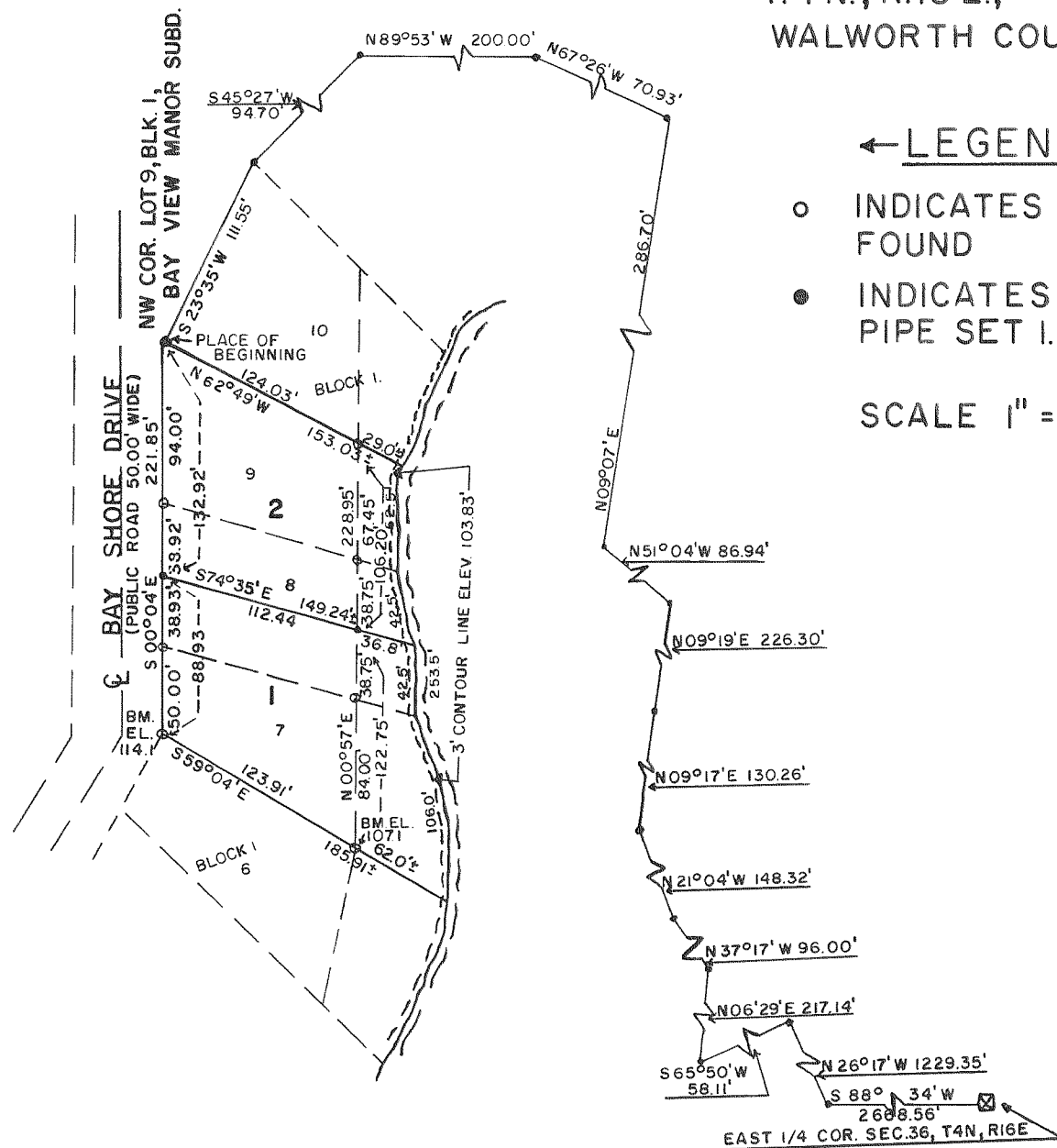


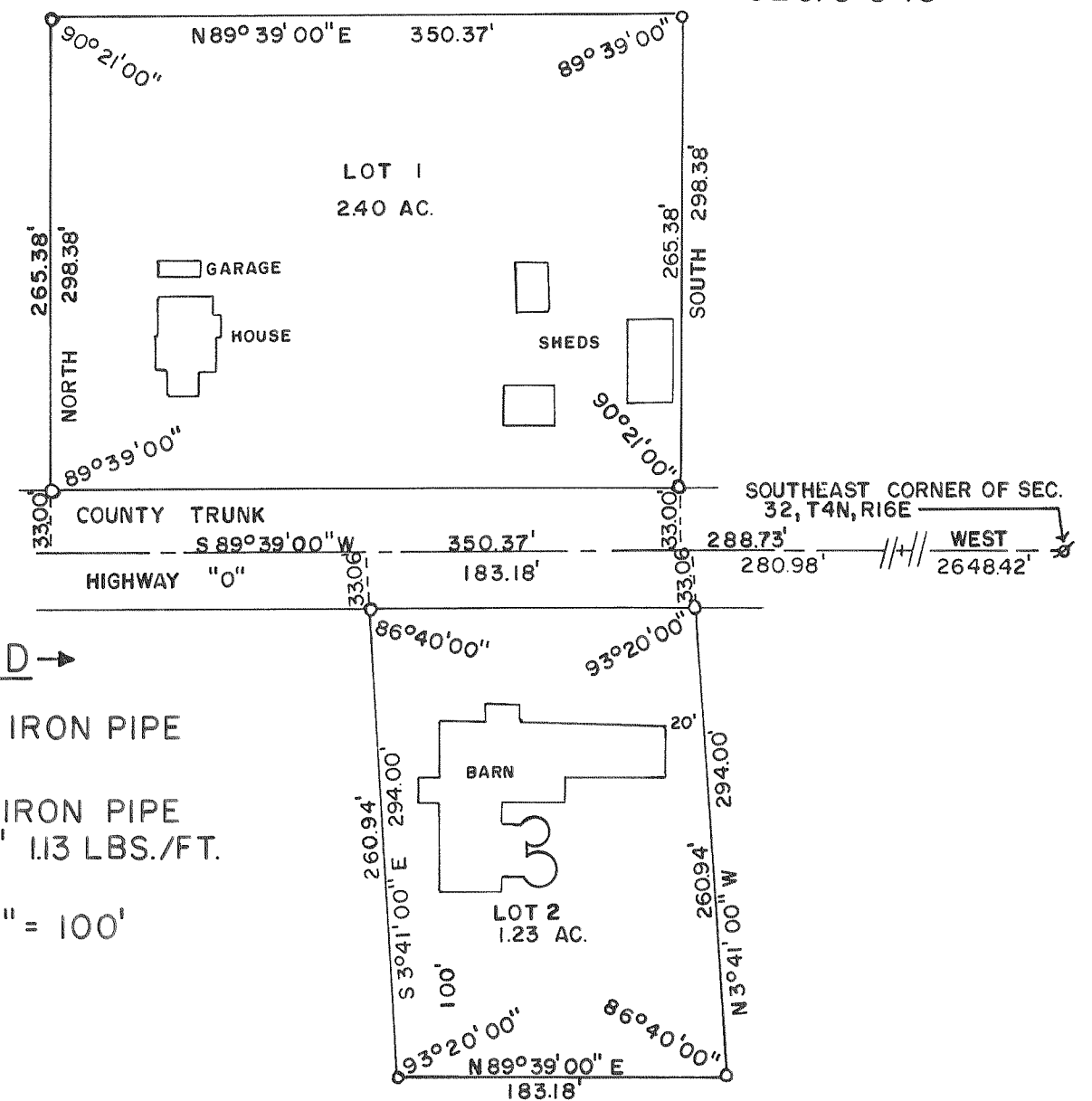
CERTIFIED SURVEY NOS. 575, 583, 605, 616

TOWN OF LAGRANGE

575 LOCATED IN THE N.E. 1/4 OF THE N.W. 1/4 OF SEC. 36,
T. 4 N., R. 16 E.,
WALWORTH COUNTY, WIS.



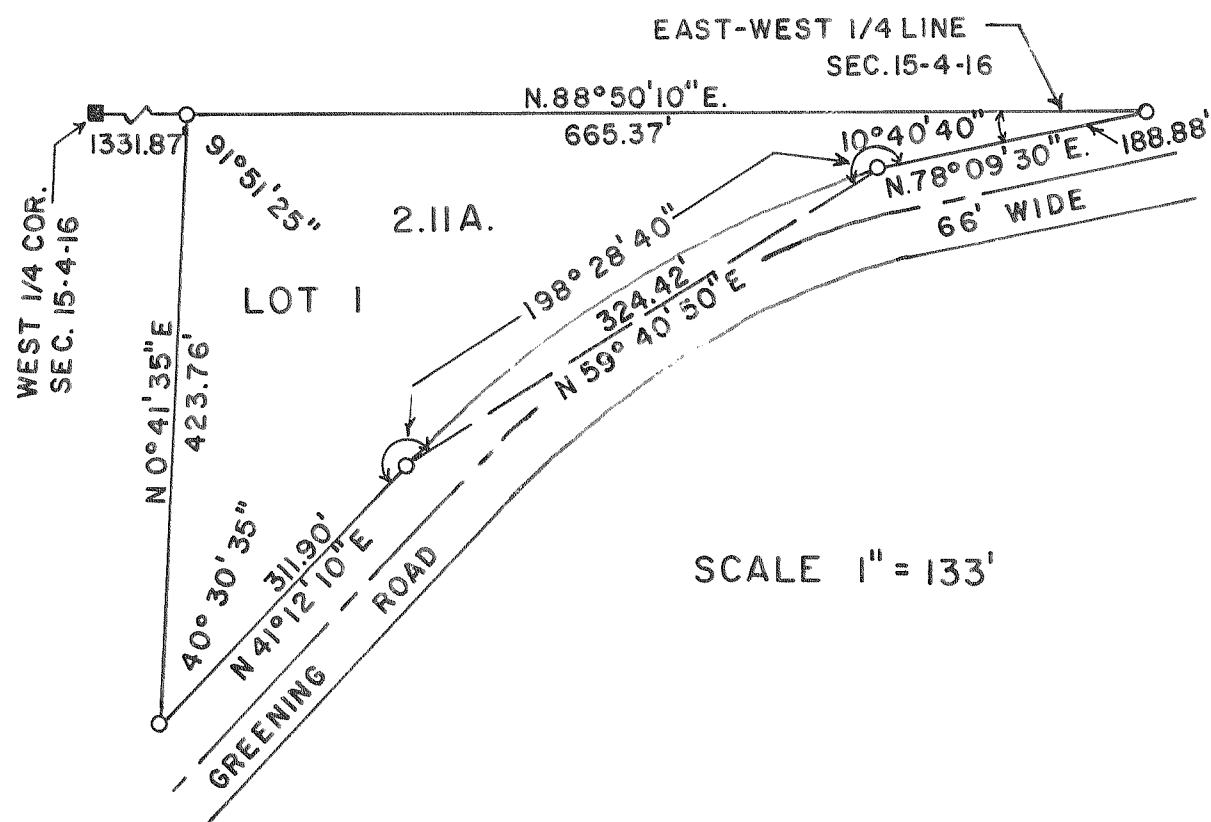
583 LOCATED IN THE E. 1/2 OF THE S.W. 1/4 OF
SEC. 32-4-16 & IN THE E. 1/2 OF THE N.W. 1/4 OF
SEC. 5-3-16



605 LOCATED IN THE S.W. 1/4 OF SEC. 15,
T. 4 N., R. 16 E., WALWORTH COUNTY, WIS.

LEGEND ↓

- IRON PIPE PLACED, 1"×24", 1.13 LBS./LIN. FT.
- CONCRETE MONUMENT, 5" DIA. × 30"
- CONCRETE MONUMENT, 6" SQ. TOP × 9" SQ. BOTTOM × 36"



616 LOCATED IN THE N.W. 1/4 OF SEC. 23,
T. 4 N., R. 16 E., WALWORTH COUNTY, WIS.

LEGEND ↓

- IRON PIPE PLACED, 1"×24", 1.13 LB./LIN. FT.
- CONCRETE MONUMENT, 6" SQ. TOP, × 9" SQ. BOTTOM × 36"

