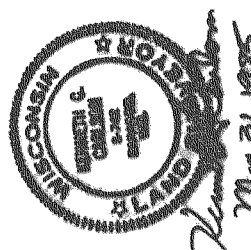
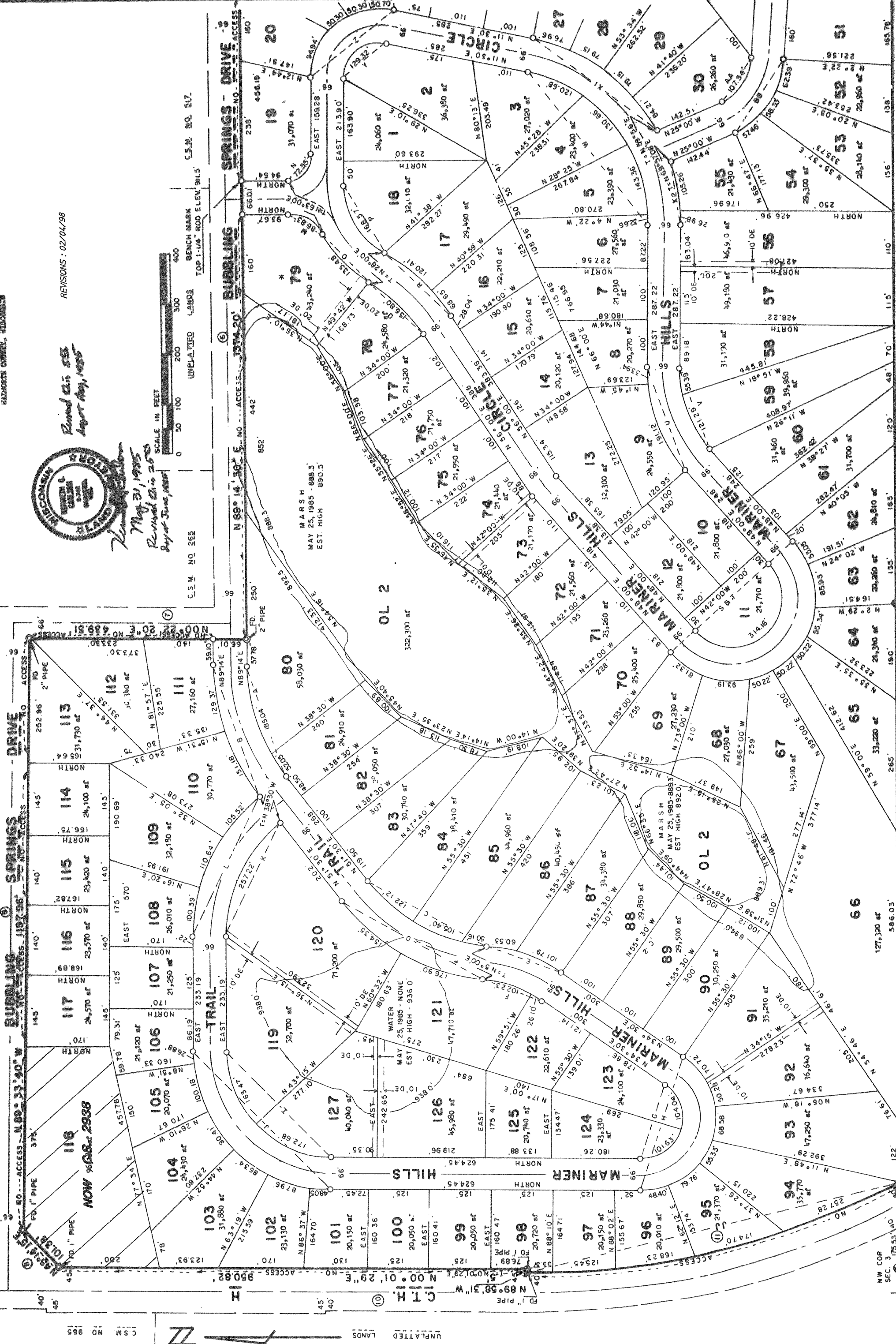


MARINER HILLS

UNPLATTED LANDS



REVISIONS: 02/04/98

C.S.M. NO. 965

UNPLATTED LANDS

NO MON. IRON ROD IN SW COR. CONC. SEC. 34

NW COR. SEC. 3 175.53' x 0

150.82' IRON ROD IN SW COR. CONC.

1163.03'

586.03'

127,320 sq ft

66

33,200 sq ft

N 89° 26' 05" E

2405.81'

3723.76'

UNPLATTED LANDS

1242.78'

SHEET 2 OF 3