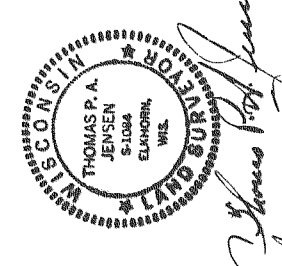


There are no objections to this plat with respect to Secs. 23 & 15 of W.S. Admin. Code as provided by Sec. 23 & 15, W.S. Stat. This plat was filed for recording on July 1, 1980.

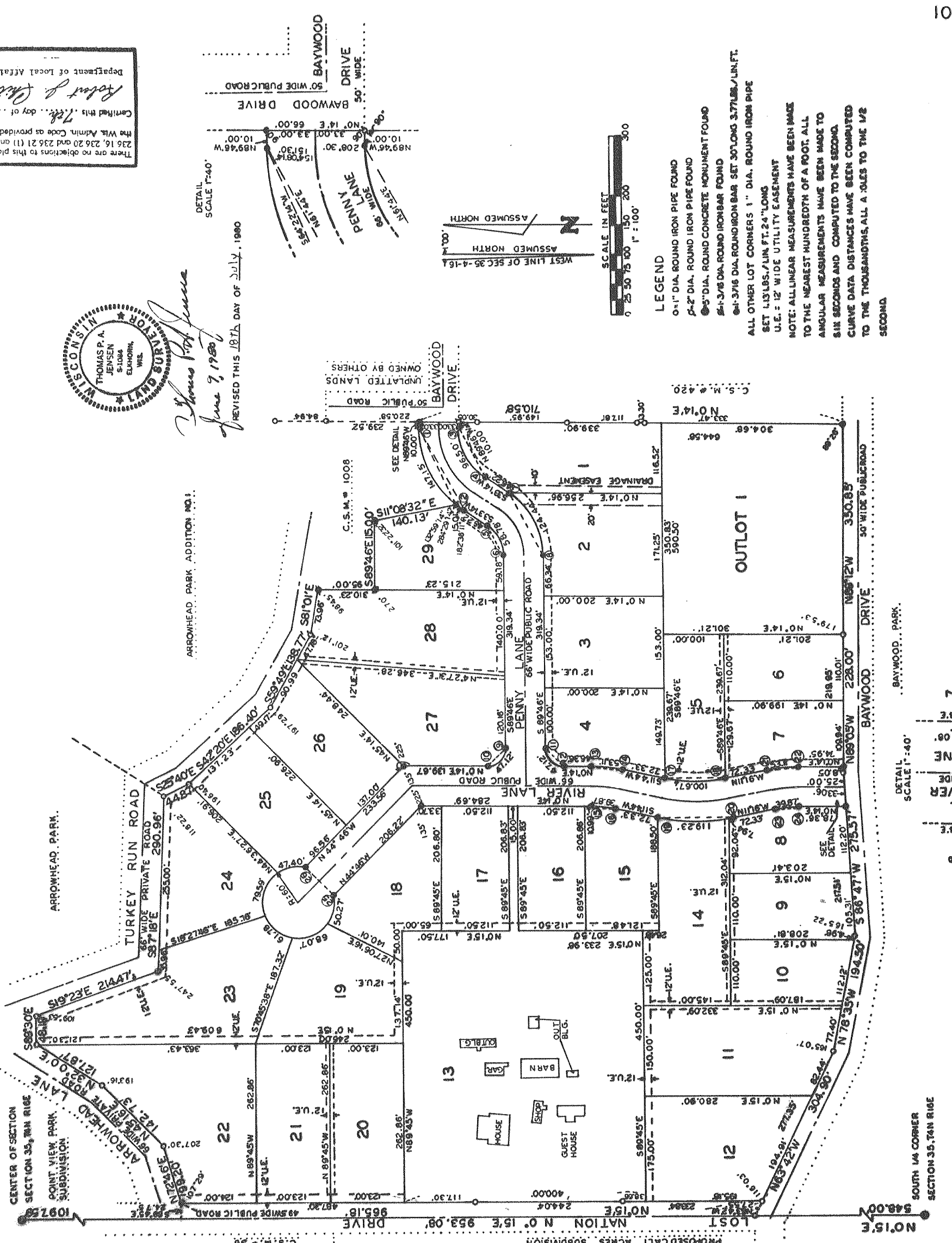
Robert J. Patterson
 Certified this 7th day of July, 1980
 Department of Local Affairs & Development

LAKE SHORES

A SUBDIVISION LOCATED IN GOVERNMENT LOT 3, BEING PART OF THE NW1/4 OF THE SE1/4, AND THE SW1/4 OF THE SE 1/4 OF SECTION 35, T4N, R16E, TOWN OF LA GRANGE, WALWORTH COUNTY, WISCONSIN

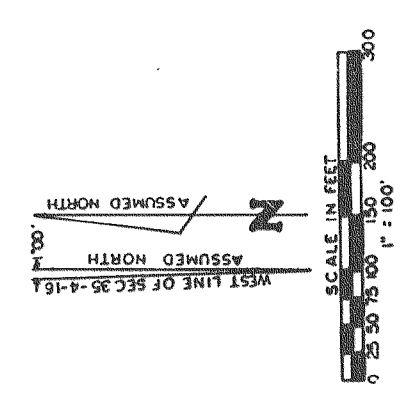
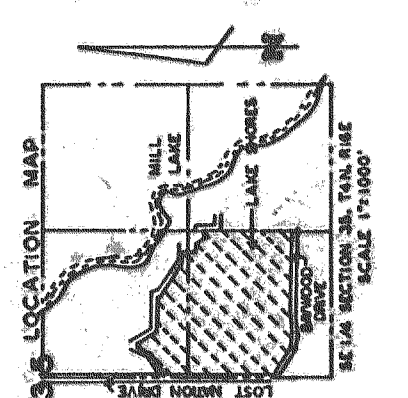


Thomas P. Jensen
 June 9, 1980
 REVISED THIS 18TH DAY OF JULY, 1980



CURVE NO.	LOT NO.	CHORD LENGTH	CHORD BEARING	CENTRAL ANGLE	TANGENT BEARING
1-3	1	13.00'	N81°44'E	57°	N89°45'W
1-3	2	13.00'	S86°22'46\"	57°	S89°45'W
1-3	3	13.00'	N35°25'46\"	57°	S33°14'W
3-4	1	67.00'	N81°44'E	37°	N89°45'W
3-4	2	67.00'	N81°44'E	37°	N89°45'W
3-4	3	67.00'	N81°44'E	37°	N89°45'W
3-4	4	67.00'	N81°44'E	37°	N89°45'W
3-4	5	67.00'	N81°44'E	37°	N89°45'W
3-4	6	67.00'	N81°44'E	37°	N89°45'W
3-4	7	67.00'	N81°44'E	37°	N89°45'W
3-4	8	67.00'	N81°44'E	37°	N89°45'W
3-4	9	67.00'	N81°44'E	37°	N89°45'W
3-4	10	67.00'	N81°44'E	37°	N89°45'W
3-4	11	67.00'	N81°44'E	37°	N89°45'W
3-4	12	67.00'	N81°44'E	37°	N89°45'W
3-4	13	67.00'	N81°44'E	37°	N89°45'W
3-4	14	67.00'	N81°44'E	37°	N89°45'W
3-4	15	67.00'	N81°44'E	37°	N89°45'W
3-4	16	67.00'	N81°44'E	37°	N89°45'W
3-4	17	67.00'	N81°44'E	37°	N89°45'W
3-4	18	67.00'	N81°44'E	37°	N89°45'W
3-4	19	67.00'	N81°44'E	37°	N89°45'W
3-4	20	67.00'	N81°44'E	37°	N89°45'W
3-4	21	67.00'	N81°44'E	37°	N89°45'W
3-4	22	67.00'	N81°44'E	37°	N89°45'W
3-4	23	67.00'	N81°44'E	37°	N89°45'W
3-4	24	67.00'	N81°44'E	37°	N89°45'W
3-4	25	67.00'	N81°44'E	37°	N89°45'W
3-4	26	67.00'	N81°44'E	37°	N89°45'W
3-4	27	67.00'	N81°44'E	37°	N89°45'W
3-4	28	67.00'	N81°44'E	37°	N89°45'W
3-4	29	67.00'	N81°44'E	37°	N89°45'W

STREET	INTERIOR ANGLE	TABLE
1-2	151°30'	14-180°15'
2-3	151°30'	15-180°15'
3-4	208°30'	16-180°15'
4-5	208°30'	17-180°15'
5-6	208°30'	18-180°15'
6-7	208°30'	19-180°15'
7-8	208°30'	20-180°15'
8-9	208°30'	21-180°15'
9-10	208°30'	22-180°15'
10-11	208°30'	23-180°15'
11-12	208°30'	24-180°15'
12-13	208°30'	25-180°15'
13-14	208°30'	26-180°15'



THIS INSTRUMENT DRAFTED BY W.D. Jensen
 SHEET 1 OF 2 SHEETS