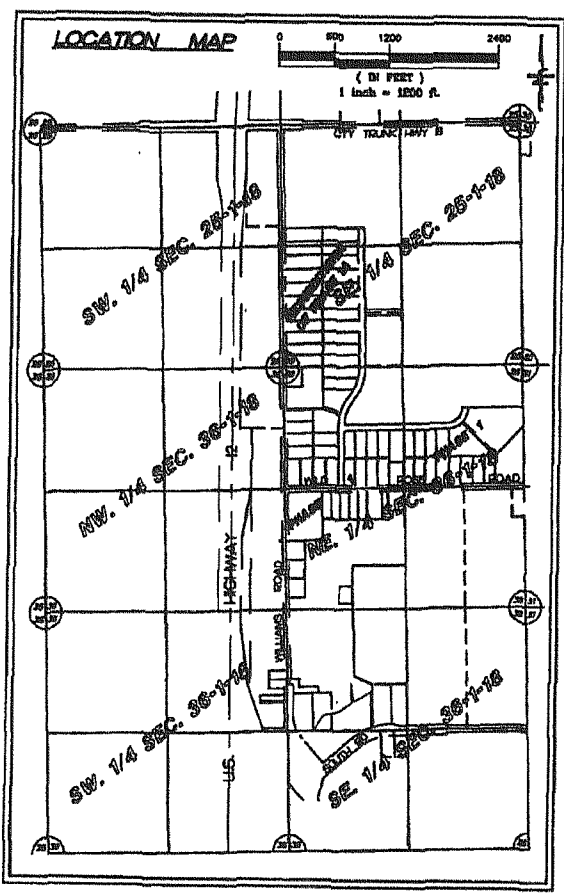
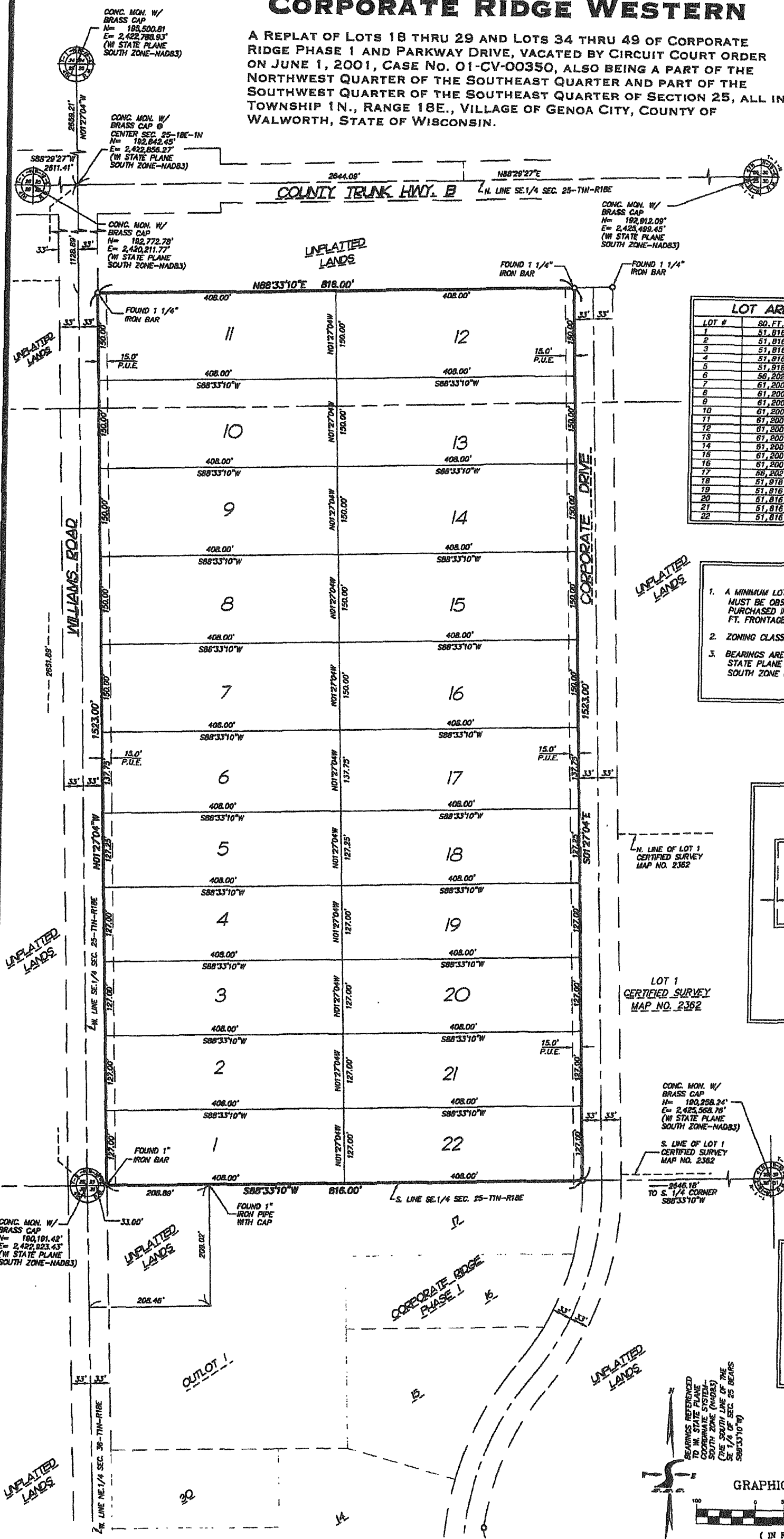


FINAL PLAT OF CORPORATE RIDGE WESTERN

A REPLAT OF LOTS 18 THRU 29 AND LOTS 34 THRU 49 OF CORPORATE RIDGE PHASE 1 AND PARKWAY DRIVE, VACATED BY CIRCUIT COURT ORDER ON JUNE 1, 2001, CASE NO. 01-CV-00350, ALSO BEING A PART OF THE NORTHWEST QUARTER OF THE SOUTHWEST QUARTER AND PART OF THE SOUTHWEST QUARTER OF THE SOUTHWEST QUARTER OF SECTION 25, ALL IN TOWNSHIP 1N., RANGE 18E., VILLAGE OF GENOA CITY, COUNTY OF WALWORTH, STATE OF WISCONSIN.

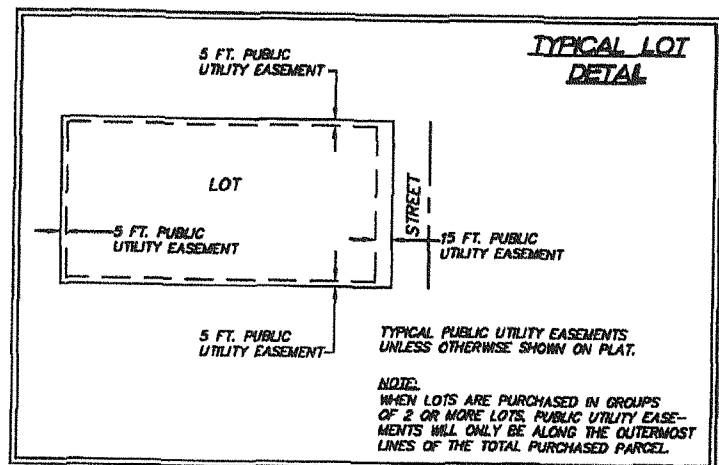
SMITH ENGINEERING CONSULTANTS, INC.
CIVIL, STRUCTURAL ENGINEERS AND SURVEYORS
15100 WESTERN BOULEVARD, SUITE 100, WISCONSIN, IL 60090
TEL: 815-385-1778 FAX: 815-385-1788
15100 WESTERN BOULEVARD, SUITE 100, WISCONSIN, IL 60090
TEL: 815-385-1778 FAX: 815-385-1788
15100 WESTERN BOULEVARD, SUITE 100, WISCONSIN, IL 60090
TEL: 815-385-1778 FAX: 815-385-1788



LOT #	SQ. FT.	ACRES
1	51,816	1.19
2	51,816	1.19
3	51,816	1.19
4	51,816	1.19
5	51,816	1.19
6	56,202	1.29
7	61,200	1.40
8	61,200	1.40
9	61,200	1.40
10	61,200	1.40
11	61,200	1.40
12	61,200	1.40
13	61,200	1.40
14	61,200	1.40
15	61,200	1.40
16	61,200	1.40
17	66,302	1.52
18	51,816	1.19
19	51,816	1.19
20	51,816	1.19
21	51,816	1.19
22	51,816	1.19

- NOTES**
- A MINIMUM LOT FRONTAGE OF 200 FT. MUST BE OBSERVED. LOT/LOTS MUST BE PURCHASED IN OBSERVANCE OF THE 200 FT. FRONTAGE MINIMUM.
 - ZONING CLASSIFICATION - M-1 INDUSTRIAL
 - BEARINGS ARE REFERENCED TO WISCONSIN STATE PLANE COORDINATE SYSTEM - SOUTH ZONE (NAD83)

- LEGEND**
- UNLESS OTHERWISE ALREADY EXISTING AS NOTED ON THIS PLAT, THE FOLLOWING MONUMENTATION IS TO BE SET
- Ø 1 1/4" X 30" IRON REBAR
 - ALL LOT CORNERS ARE 3/4" X 24" IRON REBAR (1.50 LBS/LIN. FT.)
 - P.U.E. - PUBLIC UTILITY EASEMENT



There are no objections to this plat with respect to Secs. 236.15, 236.16, 236.20 and 236.21 (1) and (2), Wis. Stats., or by the County Planning Agency.

Certified October 2nd, 2001

Barbara Power
Department of Administration

SURVEYORS SEAL

Dated this 21 day of August, 2001

Eric J. Haglund
Eric J. Haglund
Wisconsin Registered Land Surveyor No. 2532
Revised this 20th day of August, 2001

**FINAL PLAT
CORPORATE RIDGE WESTERN
WALWORTH COUNTY
GENOA CITY, WISCONSIN**

REVISIONS	DWN BY:	INT:	DATE:	PROJECT NO.
1	EH	8-30-2001	08-08-01	PRM-010106
2				
3				
4				
5				
6				

GRAPHIC SCALE
(IN FEET)
1 inch = 100 ft.