

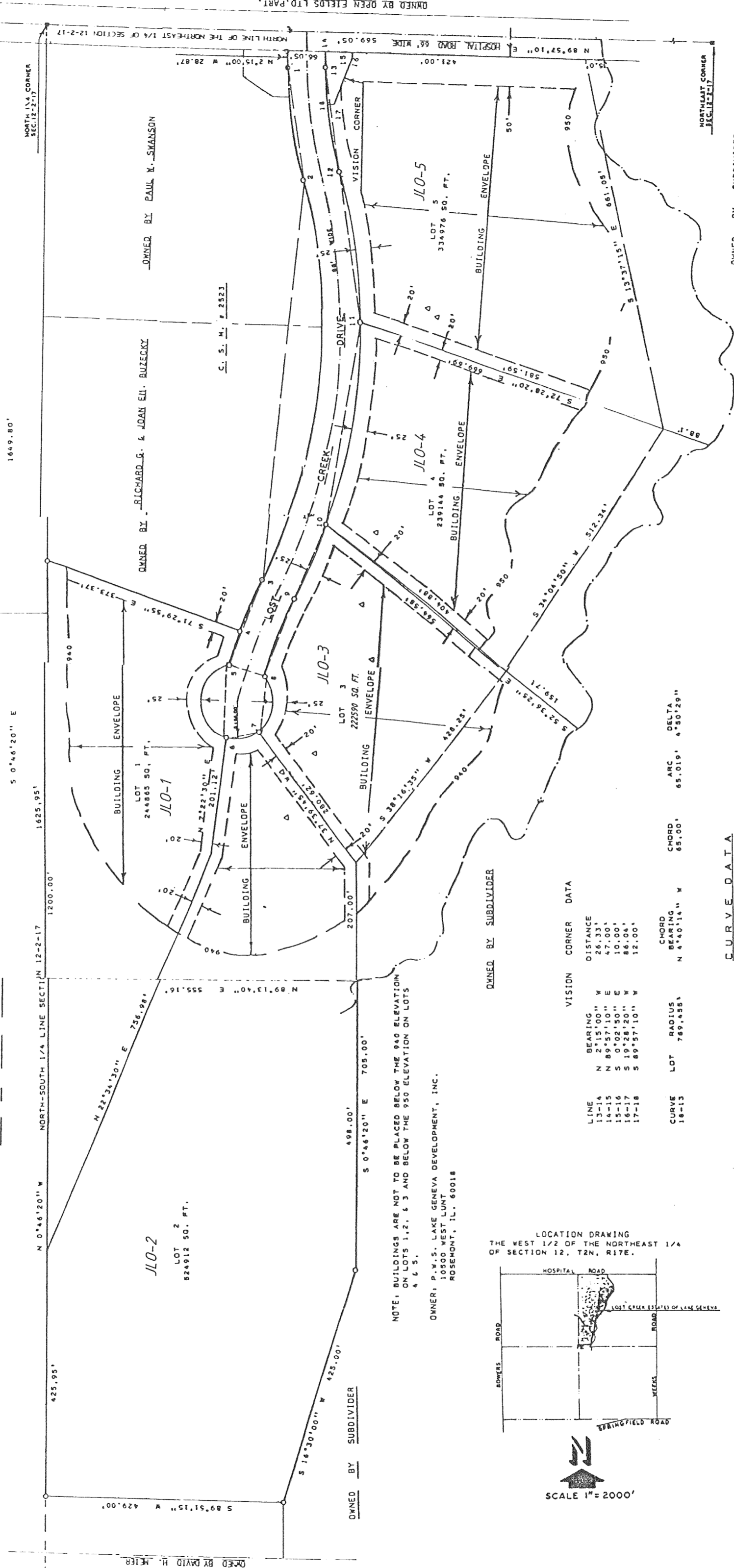
GENEVA TOWNSHIP LOST CREEK ESTATES

A SUBDIVISION LOCATED IN THE WEST 1/2 OF THE NORTHEAST 1/4 OF SECTION 12, T2N, R17E, TOWN OF GENEVA, WALWORTH COUNTY, WISCONSIN.

NOTE, BEARINGS ARE ASSUMED AS SHOWN ON PREVIOUS SURVEY RECORDS.

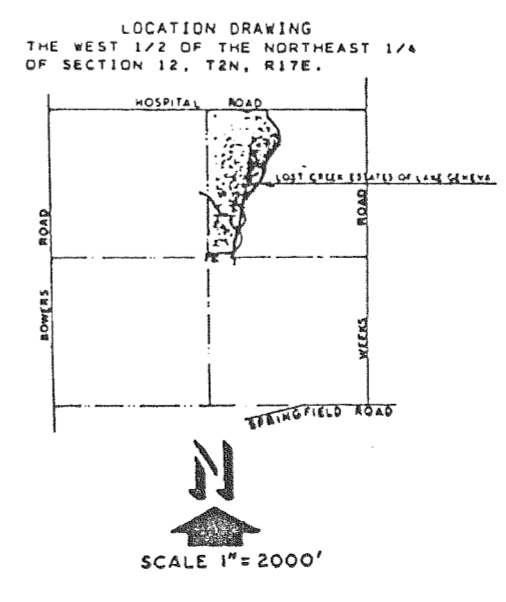
OWNED BY IRENNIA SZYMANSKI

OWNED BY JOHN, ODVA & DONALD AMES



NOTE: BUILDINGS ARE NOT TO BE PLACED BELOW THE 940 ELEVATION ON LOTS 1, 2, & 3 AND BELOW THE 950 ELEVATION ON LOTS 4 & 5.

OWNER: P.M.S. LAKE GENEVA DEVELOPMENT, INC.
1050 WEST LUMBER
ROSEMONT, IL. 60018



SCALE 1" = 2000'

VISION CORNER DATA

LINE	BEARING	DISTANCE
13-14	N 2°15'00" W	26.33'
14-15	N 89°57'10" E	47.00'
15-16	S 0°02'50" E	8.00'
16-17	S 89°57'10" W	12.00'

CURVE	LOT	RADIUS	TANGENT BEARING	CHORD BEARING	CHORD	ARC	DELTA
18-13		769.4851	S 2°14'59" E	N 4°40'14" W	65.00'	65.019'	4°50'29"

CURVE DATA

CURVE	LOT	RADIUS	TANGENT BEARING	CHORD BEARING	CHORD	ARC	DELTA	TANGENT BEARING
1-2		935.48'	S 2°14'59" E	S 9°04'16" E	198.455'	198.926'	13°30'33"	S 15°53'32"
2-3		967.00'	S 15°53'32" E	S 5°16'00" V	698.089'	714.212'	42°19'04"	S 26°25'32"
3-4		1033.00'	S 23°44'04" V	S 23°44'04" V	97.000'	97.000'	5°22'58"	S 17°47'24"
4-5		1033.00'	S 19°25'00" V	S 19°25'00" V	58.649'	58.657'	3°15'12"	N 43°48'51"
5-5		66.00'	S 28°25'32" E	S 22°06'28" V	155.545'	155.693'	8°38'08"	
5-6		66.00'	S 78°11'31" V	S 73°47'40" E	88.027'	345.544'	208°58'23"	
6-7		86.00'	S 04°53'23" V	N 04°53'23" V	127.881'	173.484'	150°35'18"	
7-8		86.00'	N 4°18'42" E	N 4°18'42" E	88.186'	110.720'	88°07'08"	
8-8		807.00'	N 72°08'07" E	N 22°09'49" E	143.767'	143.920'	8°31'39"	N 28°25'32"
9-12		1033.00'	N 28°25'32" E	N 5°18'00" E	745.735'	782.959'	42°19'04"	S 15°53'32"
10-11		1033.00'	N 22°33'13" E	N 22°33'13" E	139.511'	139.511'	7°44'28"	
11-12		1033.00'	N 8°42'36" E	N 8°42'36" E	357.764'	389.666'	18°55'37"	
12-13		788.48'	N 16°53'32" V	N 9°04'16" V	182.778'	183.211'	13°36'33"	N 2°14'01" W

- LEGEND
- - CONC. MONUMENT FOUND
 - O - 2" DIA. IRON PIPE SET
 - 1" X 24" X 1.13 LBS./LIN. FT.
 - MINIMUM RIGID PIPE SET AT ALL OTHER LOT CORNERS
 - Δ - BORING HOLE

REVISIONS :