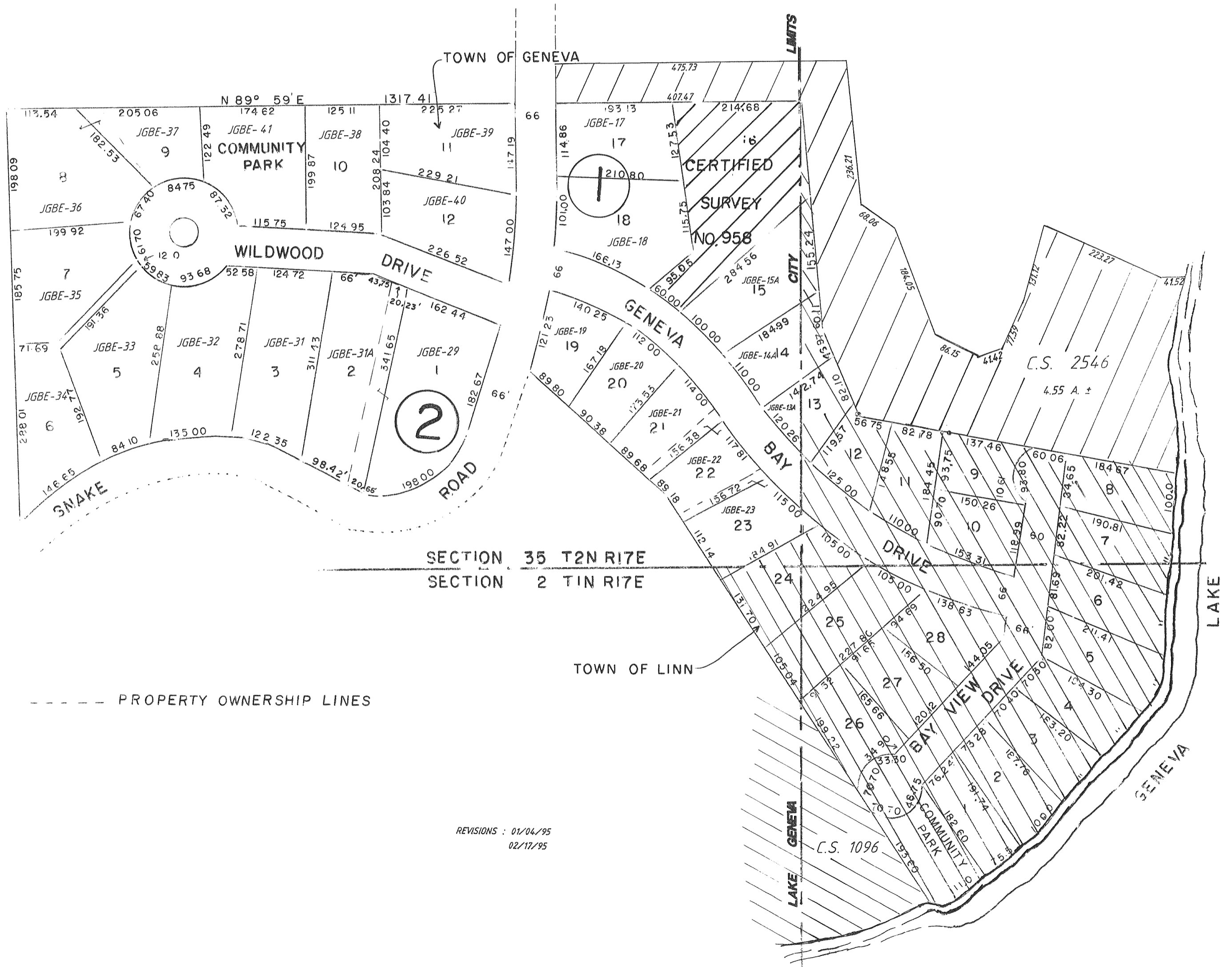


GENEVA BAY ESTATES

SECTION 35 T2N R17E & SECTION 2 T1N R17E
TOWN OF LINN & TOWN OF GENEVA
& CITY OF LAKE GENEVA



SECTION 35 T2N R17E
SECTION 2 T1N R17E

----- PROPERTY OWNERSHIP LINES

REVISIONS : 01/04/95
02/17/95

C.S. 1096

C.S. 2546
4.55 A. ±