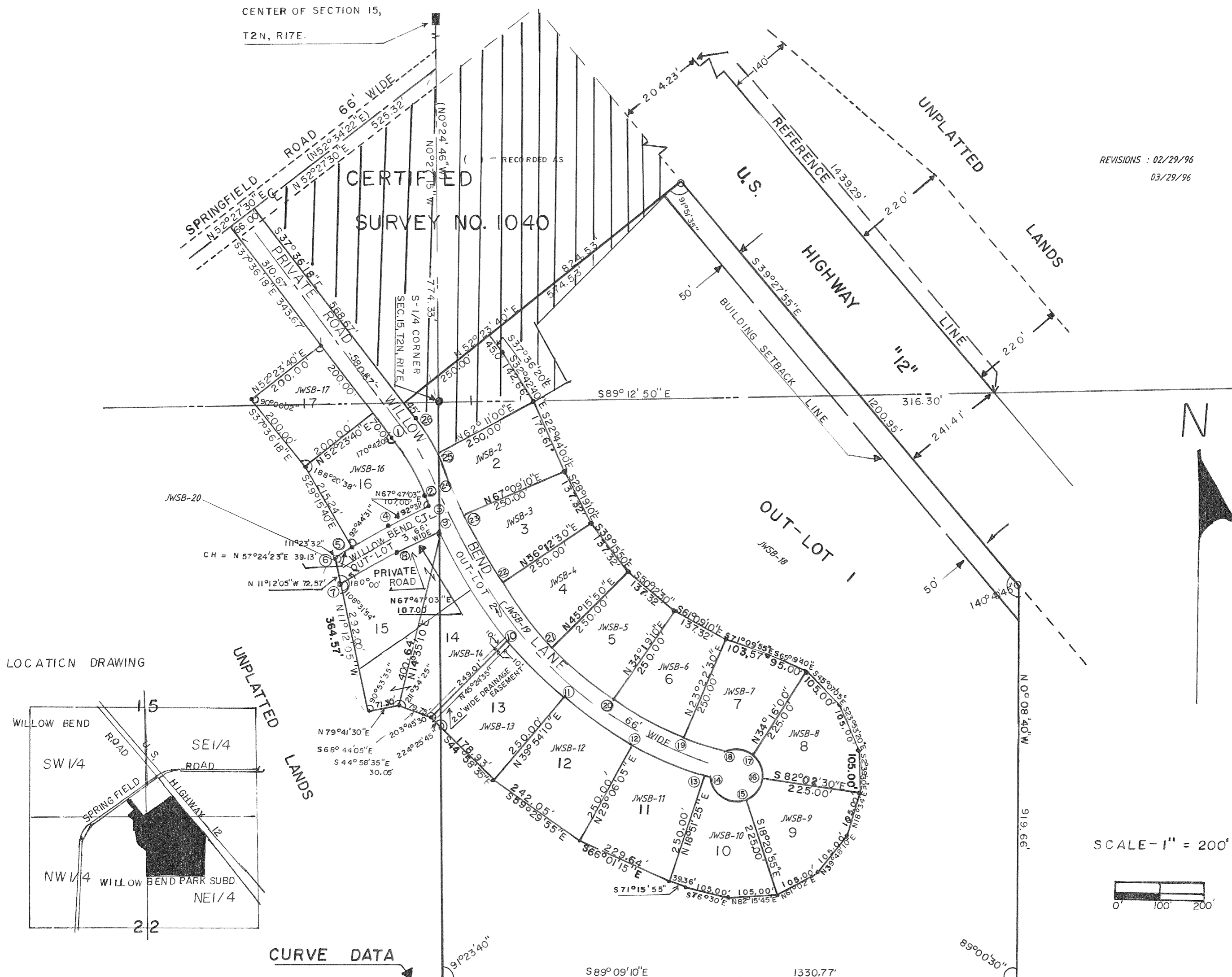
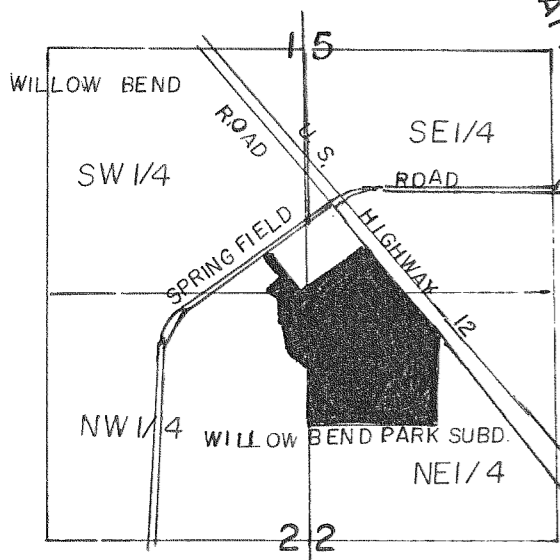


WILLOW BEND PARK

A SUBDIVISION LOCATED IN THE SOUTHWEST 1/4 AND THE SOUTHEAST 1/4 OF SECTION 15 AND THE NORTHWEST 1/4 AND THE NORTHEAST 1/4 OF SECTION 22, T2N, R17E. WALWORTH COUNTY, WISCONSIN.



LOCATION DRAWING



CURVE DATA

CURVE NO.	LOT NO.	RADIUS	LENGTH	CHORD BEARING	CENTRAL ANGLE	TANGENT BEARING	CURVE NO.	LOT NO.	RADIUS	LENGTH	CHORD BEARING	CENTRAL ANGLE	TANGENT BEARING
1-2	16	520.00'	168.04'	S 28°18'23" E	18°35'50"	S 37°36'18" E	12-13	11	1036.00'	185.00'	S 66°01'15" E	10°14'42"	S 60°53'54" E
2-3	16	1036.00'	25.00'	S 19°41'57" E	1°22'58"	S 19°00'28" E	13-14	10	1036.00'	16.04'	S 71°35'13" E	0°53'14"	S 71°08'36" E
4-5	16	633.00'	95.00'	N 63°28'51" E	3°36'24"	N 67°47'3" E	9-14	-	1036.00'	842.58'	S 48°02'09" E	47°59'22"	S 24°02'28" E
5-6	-	633.00'	39.13'	N 57°24'23" E	3°32'32"	N 55°38'07" E	14-15	10	60.00'	87.01'	S 61°52'24" E	92°57'06"	S 15°23'51" E
4-6	16	633.00'	133.97'	N 61°42'35" E	12°08'56"	N 67°47'03" E	15-16	9	60.00'	63.32'	N 39°48'17" E	63°41'32"	N 71°39'03" E
7-8	15	567.00'	148.35'	N 60°16'01" E	15°02'04"	N 67°47'03" E	16-17	8	60.00'	63.32'	S 23°53'15" E	63°41'32"	N 7°57'31" E
9-10	14	1036.00'	284.99'	S 31°56'49" E	15°48'42"	S 24°02'28" E	17-18	7	60.00'	71.32'	N 87°48'05" E	72°55'48"	S 55°44'01" E
10-11	13	1036.00'	185.00'	S 44°58'31" E	10°14'42"	S 39°51'10" E	14-18	-	60.00'	66.00'	N 17°58'10" E	66°44'02"	S 15°23'51" E
11-12	12	1036.00'	195.00'	S 55°15'53" E	10°48'02"	S 50°05'52" E	18-19	7	970.00'	91.47'	S 69°19'41" E	5°24'18"	S 72°01'50" E
3-9	-	1036.00'	66.00'	S 22°12'57" E	3°39'02"	S 24°02'28" E	2-14	-	1036.00'	924.89'	S 45°31'09" E	53°01'22"	S 19°00'28" E
19-20	6	970.00'	185.00'	S 61°09'12" E	10°56'40"	S 66°37'32" E	18-24	-	970.00'	865.97'	S 45°31'09" E	53°01'22"	S 19°00'28" E
20-21	5	970.00'	185.00'	S 50°12'32" E	10°56'40"	S 55°40'52" E	24-25	2	586.00'	90.00'	S 23°24'43" E	8°48'30"	S 19°00'28" E
21-22	4	970.00'	185.00'	S 39°15'52" E	10°56'40"	S 44°44'12" E	25-26	1	586.00'	100.00'	S 32°42'38" E	9°47'20"	S 37°36'18" E
22-23	3	970.00'	185.00'	S 28°19'12" E	10°56'40"	S 33°47'32" E	24-26	-	586.00'	189.37'	S 28°18'23" E	18°35'50"	S 37°36'18" E
23-24	2	970.00'	65.00'	S 20°55'40" E	3°50'24"	S 19°00'28" E							