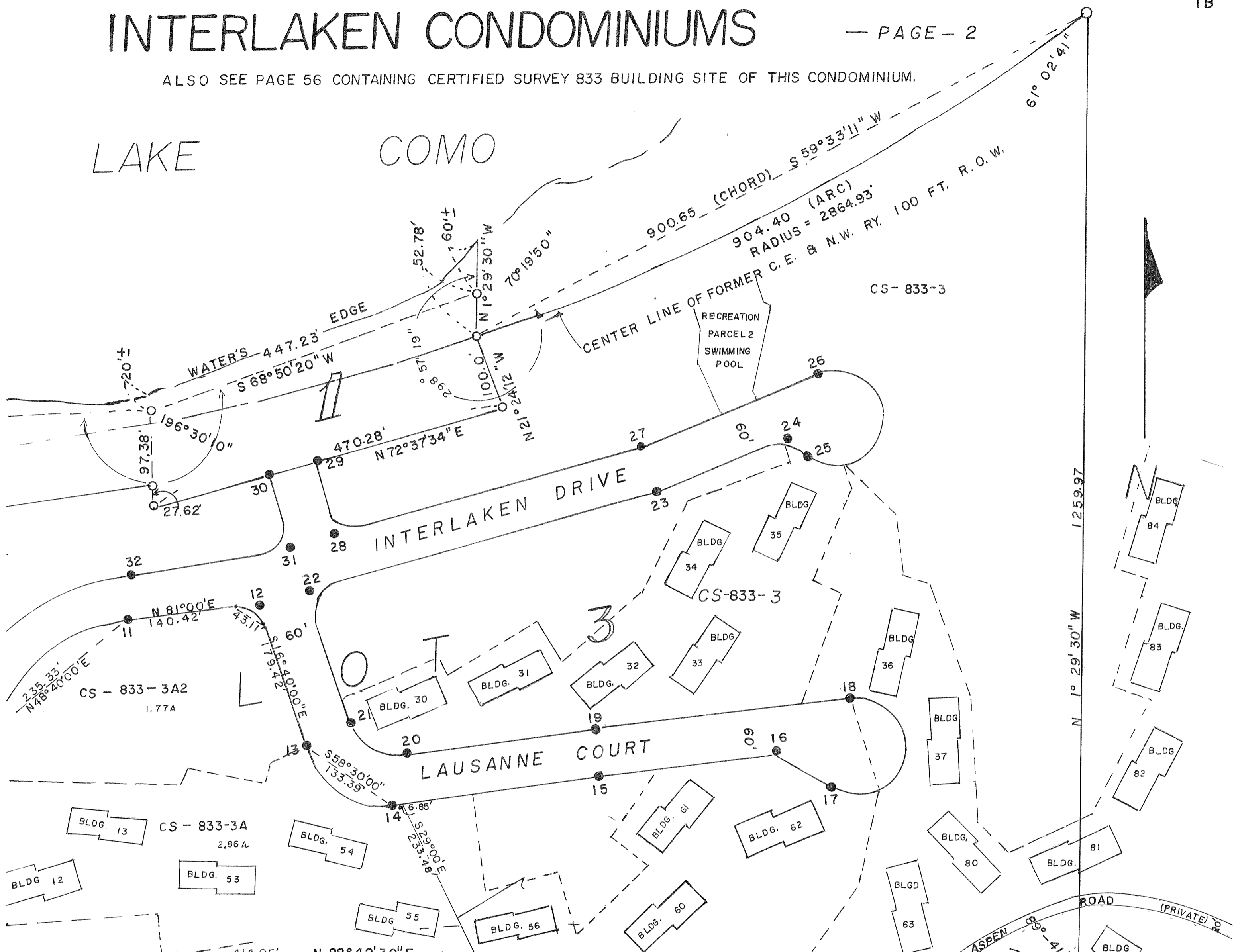


INTERLAKEN CONDOMINIUMS

ALSO SEE PAGE 56 CONTAINING CERTIFIED SURVEY 833 BUILDING SITE OF THIS CONDOMINIUM.

LAKE COMO



LINE	LENGTH	RADIUS	CHORD	CHORD	CENTRAL	TANGENT	DATA	LINE	LENGTH	RADIUS	CHORD	CHORD	CENTRAL	TANGENT	DATA
			LENGTH	BEARING	ANGLE	BEARING	ARC		LENGTH		LENGTH	BEARING	ANGLE	BEARING	ARC
3-4	193.65'							31-32	209.35'	280	299.51'	S 48°-40' W	64°-40'	S 81°-0' W	316.02'
4-5	275		249.00'	N 3°-25' E	53°-50'-15"	N 30°-20' E	258.40'	32-33							
5-6	132.18		93.77'	N 13°-30' W	20°-0'	N 23°-30' W	94.25'	33-34	1.32	30	50.74'	S 61°-56'-44" W, 115°-29' 57"		S 16°-20' W	60.48'
6-7	270		250	N 6°-25' E		N 3°-30' W	86.54'	34-35							
7-8	195.63		86.11'	N 9°-20' E	215°-20'	S 81°-40' W	225.49'	35-36	210	189.84'	N 79°-07'-39" W, 53°-44' 43"			S 74°-0' W	196.99'
8-9	250		114.34'	N 1°-30' E	231°-0'	S 79°-40' W	102.22'	36-37	85.13	210	233.96'	N 54°-45' W, 102°-30'		S 74°-0' W	268.34'
9-10	49.11		70	N 58°-30' W	83°-40'	S 79°-40' W	102.22'	37-38	100.96	60	60.0	S 19°-40' E	300°-00'	S 70°-20' W	314.16'
10-11	220		108.31'	N 1°-30' E	231°-0'	S 66°-0' W	241.90'	38-54						S 70°-20' W	
11-12	166.65'		100	S 58°-30' E	83°-40'	N 16°-40' W		43-44	44.04					23°-30' E	
12-13	205.65'		133.39'	S 58°-30' E	83°-40'	N 79°-40' E	146.03'	44-45		215	194.67'	S 3°-25' W, 53°-50'-15"			202.02'
13-14	100		133.39'	S 58°-30' E	83°-40'	N 81°-40' E		45-46	246.24					S 30°-20' W	
14-15	259.43'		100	S 58°-30' E	83°-40'	N 81°-40' E		50-51	210.66					N 3°-30' W	
15-16	237.75'		100	S 58°-30' E	83°-40'	S 63°-0' E		51-52		150	233.96'	N 54°-45' W, 102°-30'			268.34'
16-17	84.61		70	N 58°-30' W	83°-40'	S 63°-0' E		52-53	83.21					S 74°-0' W	
17-18	342.52		70	N 58°-30' W	83°-40'	S 63°-0' E		53-54	99.04					S 70°-20' W	
18-19	233.63		70	N 58°-30' W	83°-40'	S 63°-0' E									
19-20	233.63		70	N 58°-30' W	83°-40'	S 63°-0' E									
20-21	70		93.38'	N 58°-30' W	83°-40'	S 63°-0' E									
21-22	175.20		93.38'	N 58°-30' W	83°-40'	S 63°-0' E									
22-23	457.01		93.38'	N 58°-30' W	83°-40'	S 63°-0' E									
23-24	170.63'		93.38'	N 58°-30' W	83°-40'	S 63°-0' E									
24-25	48.59'		93.38'	N 58°-30' W	83°-40'	S 63°-0' E									
25-26	60.00		93.38'	N 58°-30' W	83°-40'	S 63°-0' E									
26-27	244.17		93.38'	N 58°-30' W	83°-40'	S 63°-0' E									
27-28	402.65'		93.38'	N 58°-30' W	83°-40'	S 63°-0' E									
28-29	101.85		93.38'	N 58°-30' W	83°-40'	S 63°-0' E									
29-30	60.00		93.38'	N 58°-30' W	83°-40'	S 63°-0' E									
30-31	104.04'		93.38'	N 58°-30' W	83°-40'	S 63°-0' E									

BOUNDARIES OF PRIVATE ROAD AT POINTS 12, 22, 24, 28 & 31 ARE FORMED BY 30.00-FOOT RADIUS CURVES. A 60.00-FT RADIUS CURVE FORMS BOUNDARY OF PRIVATE ROAD AT POINT 16. AREA OF PRIVATE ROADS IS 6.71 ACRES.