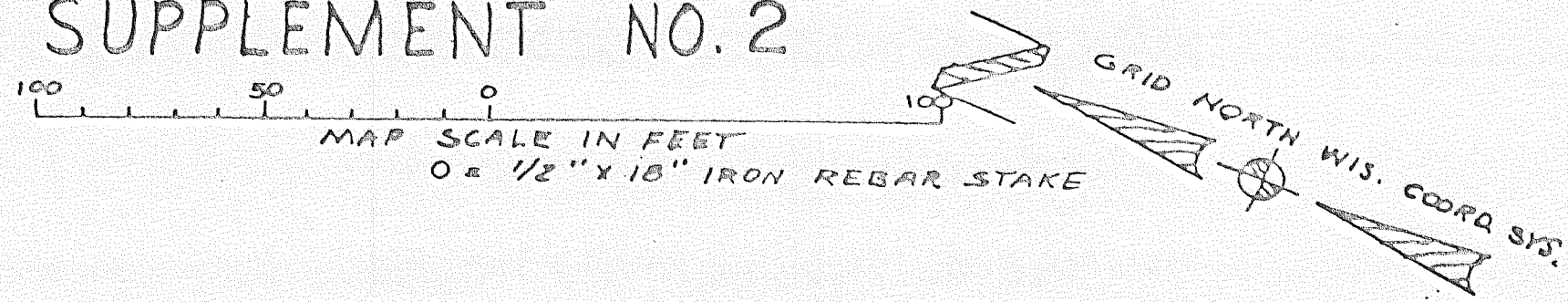


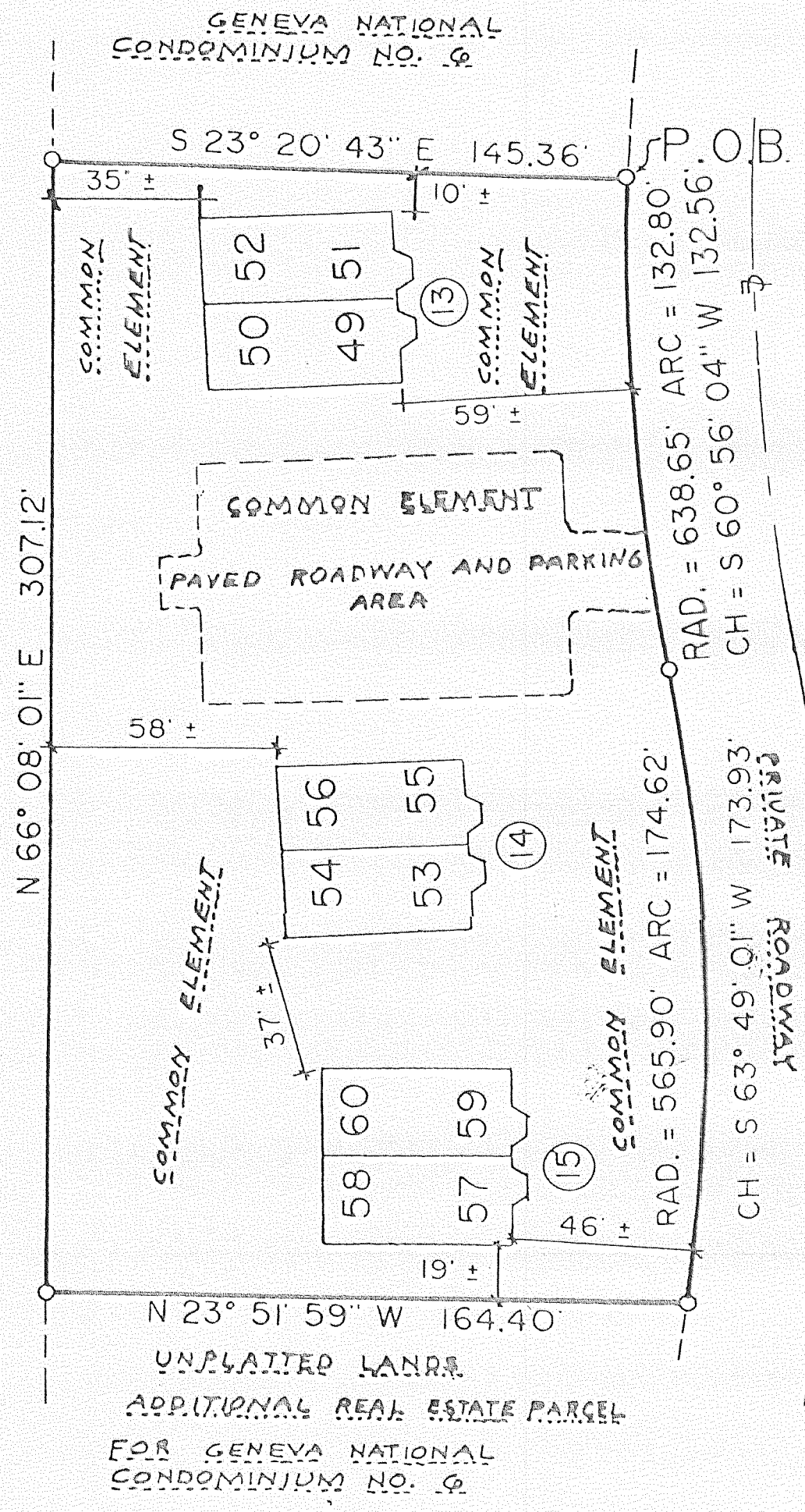
# GENEVA NATIONAL CONDOMINIUM NO. 6 WALWORTH COUNTY, WISCONSIN

LOCATED IN THE NW 1/4 OF NE 1/4 OF SEC. 30, TOWN 2 N., RANGE 17 E.  
SUPPLEMENT NO. 2

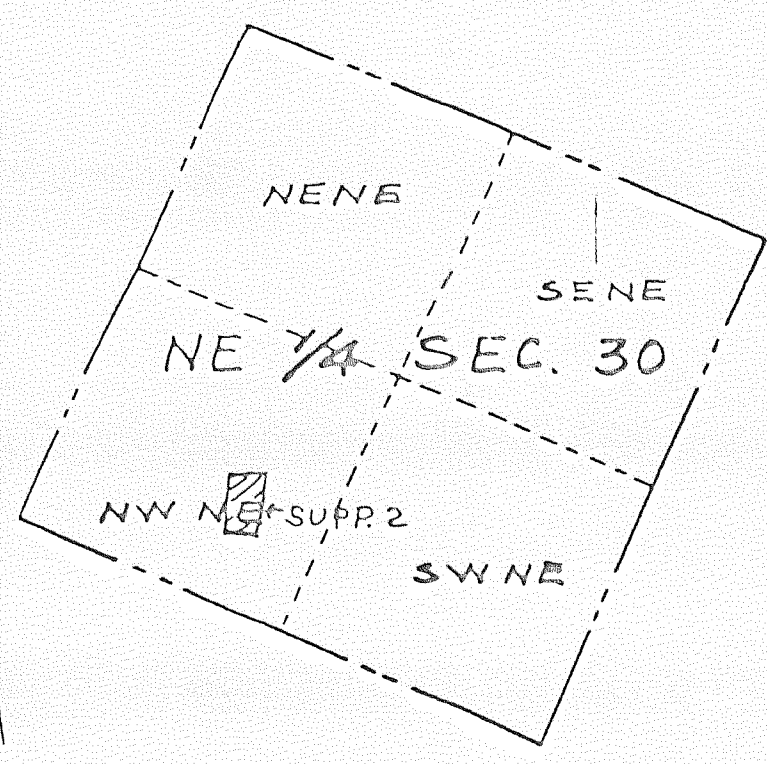


NOTE: BUILDINGS AND OTHER IMPROVEMENTS SHOWN ON THIS EXHIBIT REPRESENT PROPOSED CONSTRUCTION NOT BEGUN AS OF THE DATE HEREOF.

GENEVA NATIONAL CONDOMINIUM NO. 31  
GOLF CLUB GROUNDS

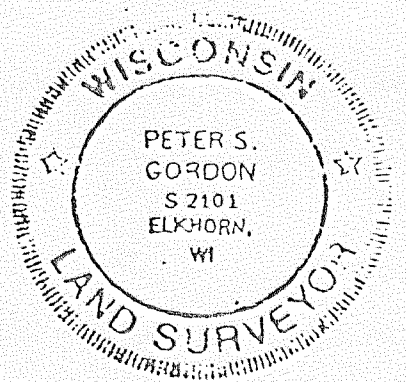


GENEVA NATIONAL AVENUE



NOTE: SUPPLEMENT NO. 2 HAS BEEN REVISED. PLEASE SEE PAGE GN 6G1 & GN 6G2

See Additional Notes  
And Legal Description  
On Sheet 2



I HEREBY CERTIFY THAT THIS PLAT IS A CORRECT REPRESENTATION OF THE CONDOMINIUM DESCRIBED TO THE BEST OF MY PROFESSIONAL KNOWLEDGE AND BELIEF AND THAT THE IDENTIFICATION AND LOCATION OF EACH UNIT AND THE COMMON ELEMENTS CAN BE DETERMINED FROM THE PLAT.

DATED: APRIL 02, 1992

*Peter S. Gordon*  
PETER S. GORDON RLS 2101