

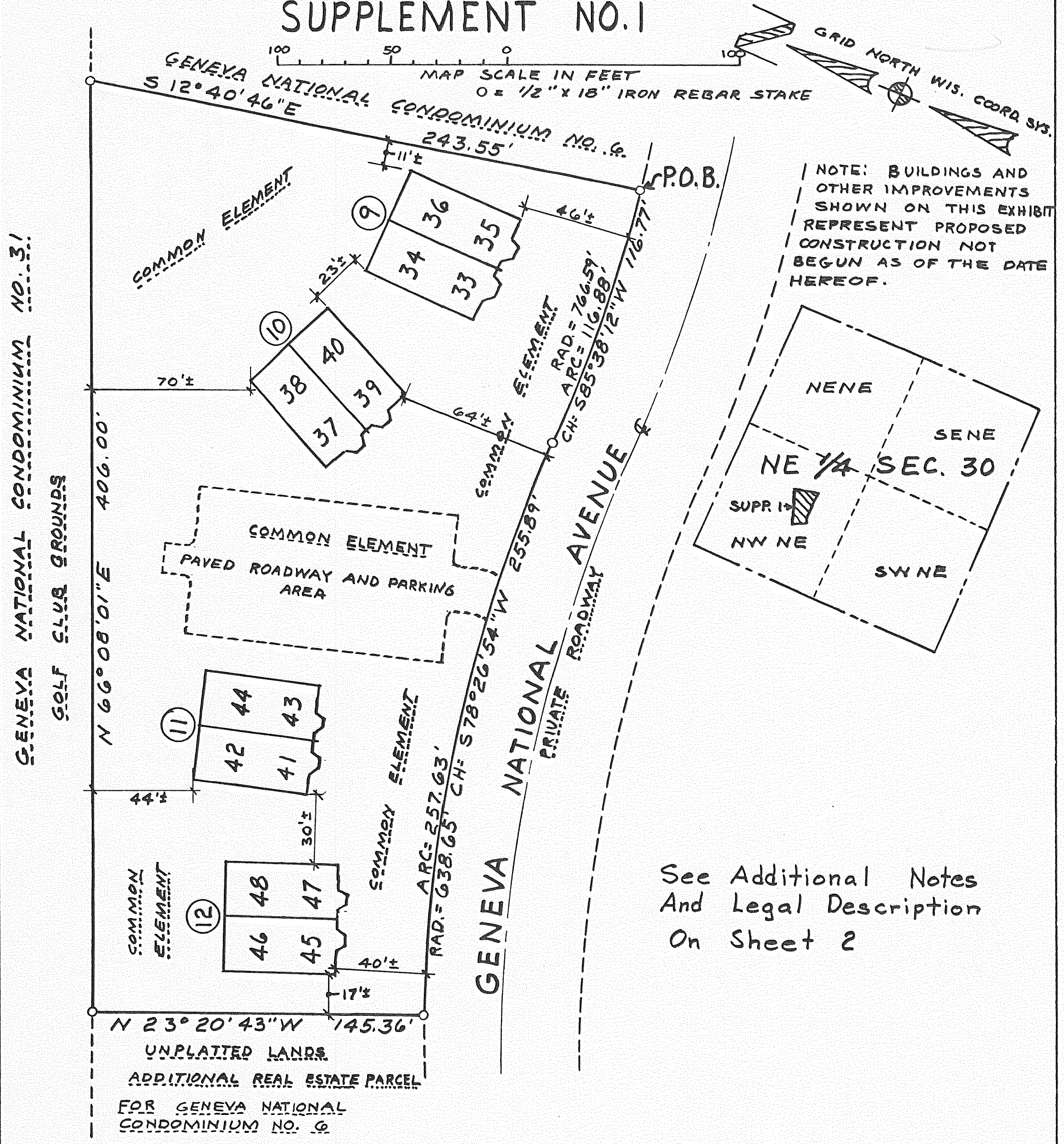
GENEVA NATIONAL CONDOMINIUM NO. 6

G.N. 6B

WALWORTH COUNTY, WISCONSIN

LOCATED IN THE NW 1/4 OF NE 1/4 OF SEC. 30, TOWN 2 N., RANGE 17 E.

SUPPLEMENT NO. 1



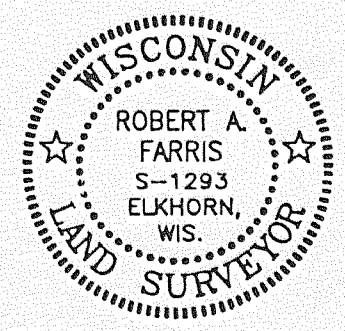
NOTE: BUILDINGS AND OTHER IMPROVEMENTS SHOWN ON THIS EXHIBIT REPRESENT PROPOSED CONSTRUCTION NOT BEGUN AS OF THE DATE HEREOF.

See Additional Notes And Legal Description On Sheet 2

GENEVA NATIONAL CONDOMINIUM NO. 31

GOLF CLUB GROUNDS

UNPLATTED LANDS
ADDITIONAL REAL ESTATE PARCEL
FOR GENEVA NATIONAL
CONDOMINIUM NO. 6



I HEREBY CERTIFY THAT THIS PLAT IS A CORRECT REPRESENTATION OF THE CONDOMINIUM DESCRIBED TO THE BEST OF MY PROFESSIONAL KNOWLEDGE AND BELIEF AND THAT THE IDENTIFICATION AND LOCATION OF EACH UNIT AND THE COMMON ELEMENTS CAN BE DETERMINED FROM THE PLAT.

DATED: 09/06/91 *Robert A. Farris*
ROBERT A. FARRIS RLS 1293

SUPPLEMENT NO. 1