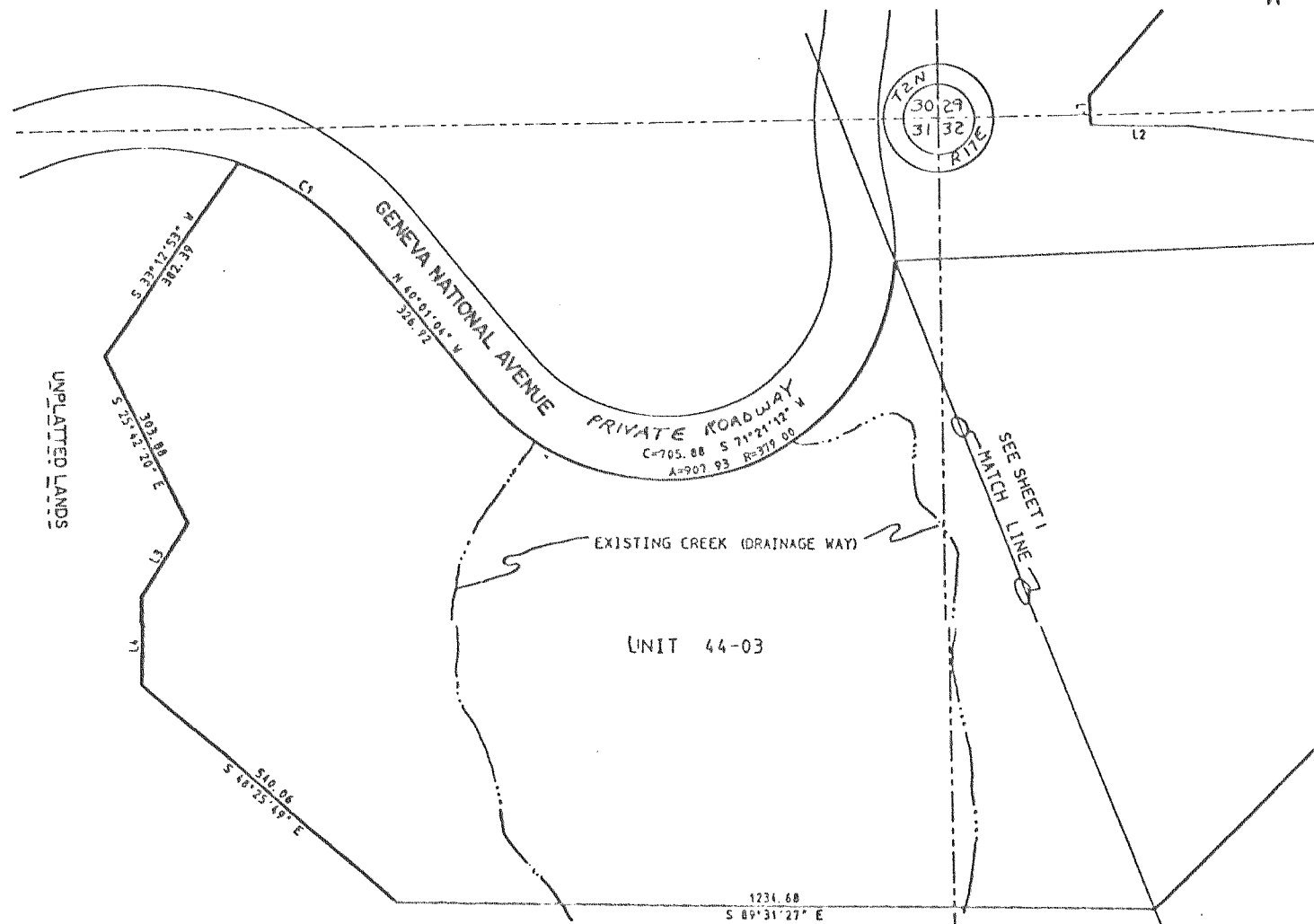
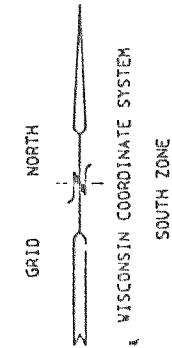


GENEVA NATIONAL CONDOMINIUM NO. 44  
 WALWORTH COUNTY, WISCONSIN

LOCATED IN THE SW 1/4 OF THE SW 1/4 OF SECTION 29  
 THE SE 1/4 OF THE SE 1/4 OF SECTION 30  
 THE NE 1/4 OF SECTION 30, & THE NW 1/4 OF SECTION 32  
 TOWN 2 NORTH, RANGE 17 EAST

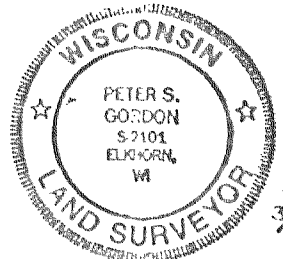
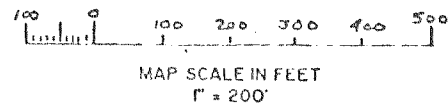


LINE	BEARING	DISTANCE
L1	S 2°51'09" E	48.06
L2	S 89°39'54" E	161.33
L3	S 31°14'59" W	141.00
L4	S 1°07'16" W	133.69

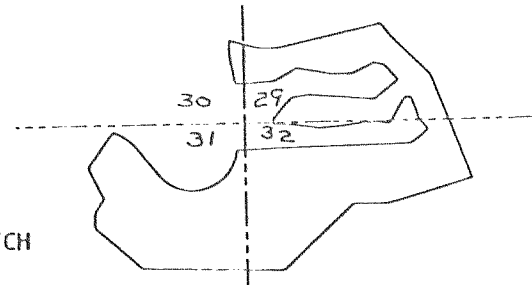
AREA SUMMARY

UNIT 44-01	8.922 ACRES
UNIT 44-02	12.762 ACRES
UNIT 44-03	54.503 ACRES

CURVE	ARC	RADIUS	CHORD LENGTH	CHORD BEARING
C1	238.95	438.00	236.00	N 55°38'48" W



*Peter S. Gordon*  
 3/30/1994



WORK ORDERED BY: GN PARTNERS, AN ILLINOIS GENERAL PARTNERSHIP

FARRIS, HANSEN & ASSOC. INC.  
 ENGINEERING, ARCHITECTURE, SURVEYING  
 7 RIDGEWAY COURT - P. O. BOX 437  
 ELKHORN, WISCONSIN 53121

EXHIBIT

A

CONDOMINIUM PLAT

SHEET 2 OF 3 SHEETS

