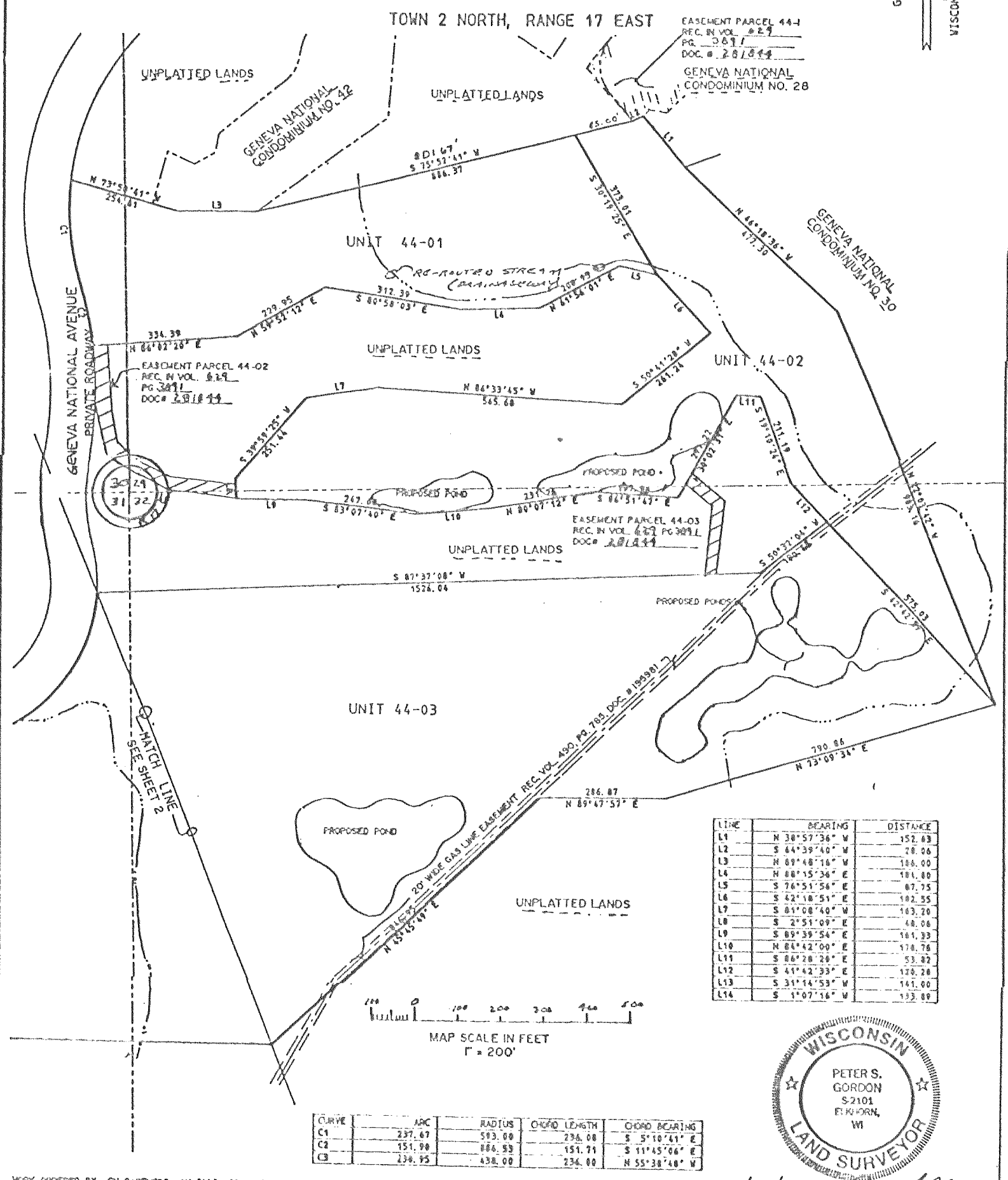
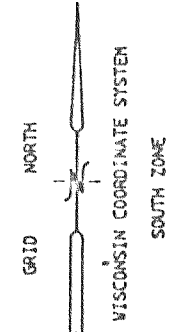


GENEVA NATIONAL CONDOMINIUM NO. 44
WALWORTH COUNTY, WISCONSIN

LOCATED IN THE SW 1/4 OF THE SW 1/4 OF SECTION 29

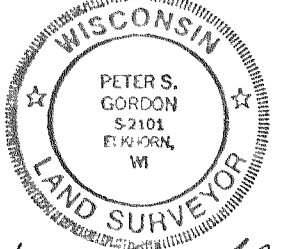
THE SE 1/4 OF THE SE 1/4 OF SECTION 30

THE NE 1/4 OF SECTION 30, & THE NW 1/4 OF SECTION 32



LINE	BEARING	DISTANCE
L1	N 38°57'38" W	152.83
L2	S 64°39'40" W	28.00
L3	N 89°48'16" W	100.00
L4	N 88°15'36" E	101.80
L5	S 76°51'56" E	87.75
L6	S 42°18'51" E	102.55
L7	S 81°08'40" W	103.20
L8	S 2°51'09" E	48.00
L9	S 89°39'54" E	101.33
L10	N 86°42'00" E	170.76
L11	S 86°28'20" E	53.82
L12	S 41°42'33" E	120.20
L13	S 31°14'53" W	141.00
L14	S 1°07'16" W	132.82

CURVE	APC	RADIUS	CHORD LENGTH	CHORD BEARING
C1	237.67	593.00	236.00	S 5°10'41" E
C2	151.90	186.53	151.71	S 11°45'06" E
C3	238.95	438.00	236.00	N 55°38'48" W



3/30/94 *Peter S. Gordon*

WORK OBTAINED BY: GH PARTNERS, AN ILLINOIS GENERAL PARTNERSHIP

FARRIS, HANSEN & ASSOC. INC.
ENGINEERING, ARCHITECTURE, SURVEYING
1 RIDGEWAY COURT - P. O. BOX 437
EAU CLAIRE, WISCONSIN 54881

EXHIBIT
A
CONDCHINIUM PLAT
SHEET 1 OF 3 SHEETS

