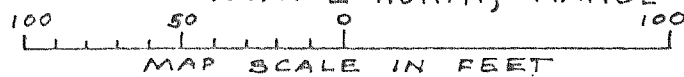


GENEVA NATIONAL CONDOMINIUM NO. 35 WALWORTH COUNTY, WISCONSIN

LOCATED IN THE SW 1/4 SE 1/4 & SE 1/4 SE 1/4 SEC. 19
AND IN THE NW 1/4 NE 1/4 & NE 1/4 NE 1/4 SEC. 30
TOWN 2 NORTH, RANGE 17 EAST

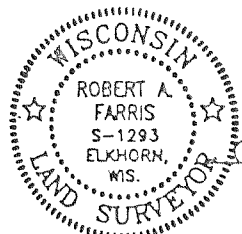
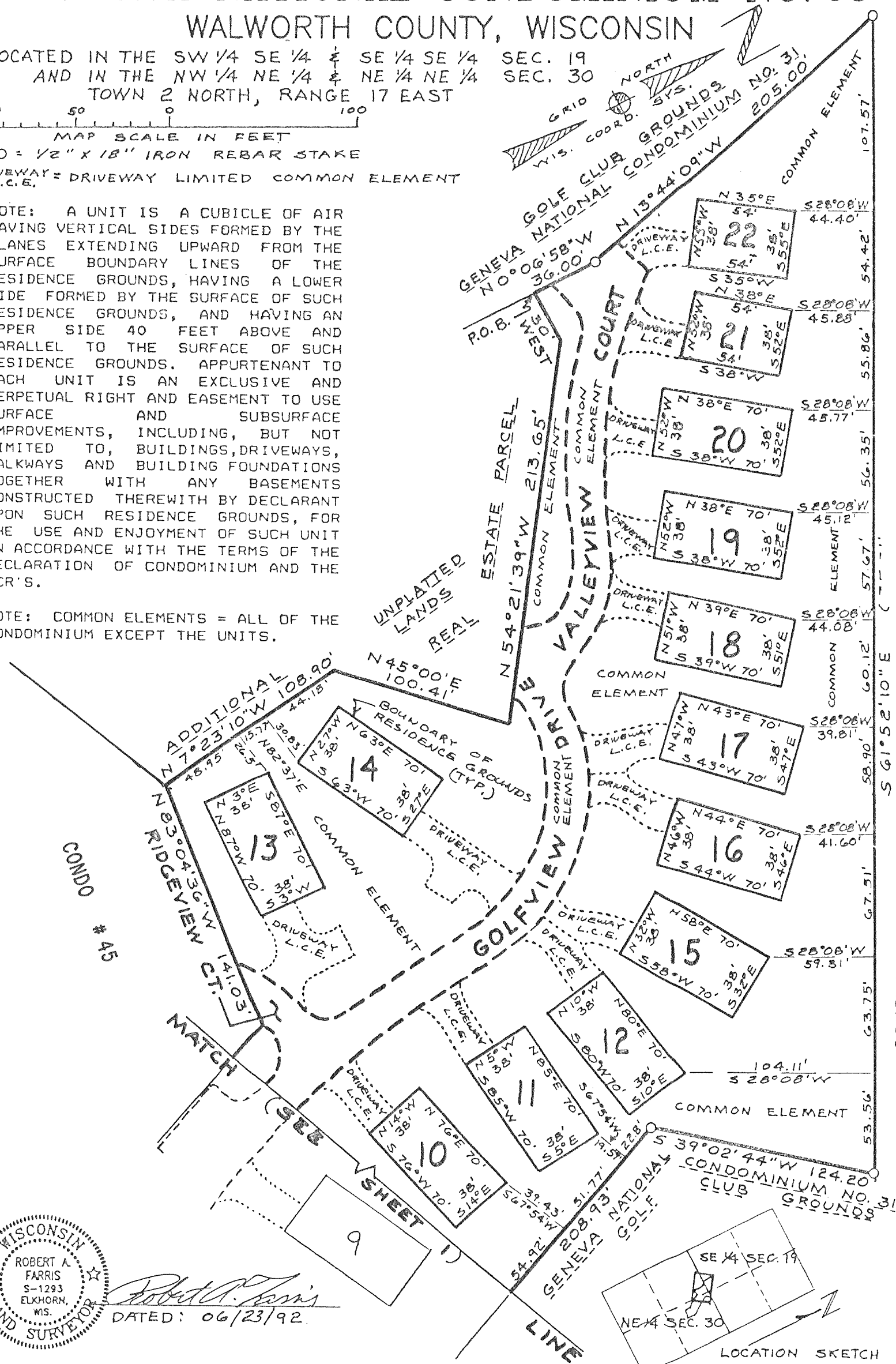


0 = 1/2" X 1/8" IRON REBAR STAKE

DRIVEWAY = DRIVEWAY LIMITED COMMON ELEMENT
L.C.E.

NOTE: A UNIT IS A CUBICLE OF AIR HAVING VERTICAL SIDES FORMED BY THE PLANES EXTENDING UPWARD FROM THE SURFACE BOUNDARY LINES OF THE RESIDENCE GROUNDS, HAVING A LOWER SIDE FORMED BY THE SURFACE OF SUCH RESIDENCE GROUNDS, AND HAVING AN UPPER SIDE 40 FEET ABOVE AND PARALLEL TO THE SURFACE OF SUCH RESIDENCE GROUNDS. APPURTENANT TO EACH UNIT IS AN EXCLUSIVE AND PERPETUAL RIGHT AND EASEMENT TO USE SURFACE AND SUBSURFACE IMPROVEMENTS, INCLUDING, BUT NOT LIMITED TO, BUILDINGS, DRIVEWAYS, WALKWAYS AND BUILDING FOUNDATIONS TOGETHER WITH ANY BASEMENTS CONSTRUCTED THEREWITH BY DECLARANT UPON SUCH RESIDENCE GROUNDS, FOR THE USE AND ENJOYMENT OF SUCH UNIT IN ACCORDANCE WITH THE TERMS OF THE DECLARATION OF CONDOMINIUM AND THE CCR'S.

NOTE: COMMON ELEMENTS = ALL OF THE CONDOMINIUM EXCEPT THE UNITS.



Robert A. Farris
DATED: 06/23/92.

WORK ORDERED BY: GN PARTNERS, AN ILLINOIS GENERAL PARTNERSHIP

FARRIS, HANSEN & ASSOC. INC.
ENGINEERING, ARCHITECTURE, SURVEYING
7 RIDGEWAY COURT - P.O. BOX 437
ELKHORN, WISCONSIN 53121

EXHIBIT **A** CONDOMINIUM PLAT
SHEET 2 OF 11 SHEETS



REVISIONS: 04/30/01