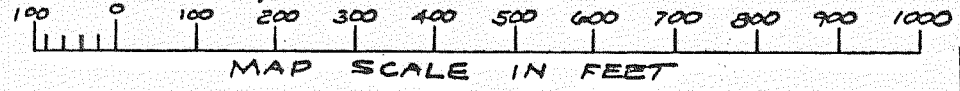
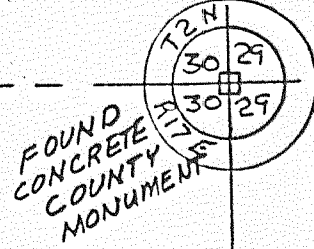


# GENEVA NATIONAL CONDOMINIUM NO. 31 G.N. 31C

## WALWORTH COUNTY, WISCONSIN



NORTH  
GRID  
WISCONSIN COORDINATE SYSTEM



MATCH LINE SEE SHEET 5

GENEVA NATIONAL  
CONDOMINIUM NO-8

GENEVA NATIONAL  
CONDOMINIUM NO-9

NE 1/4 SE 1/4

NW 1/4 SW 1/4

DETAIL  
SEPARATION  
VOL. 499 PG. 822  
DOC. 200 784

BUILDING  
PARCEL

R=327.00'  
L=256.95'

R=273.00'  
L=132.18'

UNIT 31-01

5' WIDE BUILDING SETBACK AREA  
SURROUNDING EXISTING TELEPHONE  
EQUIPMENT BUILDING.

DETAIL

DETAIL

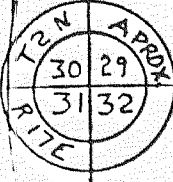
EASEMENT VOL. 490 PG. 795  
DOC. # 195983

SE 1/4 SE 1/4 R=707.00'  
L=742.31'

UNPLATTED LANDS

UNPLATTED  
LANDS  
555.03' 28" W  
242.73'  
91.59'  
S78° 14' 54" W  
N25° 04' 22" W  
N31° 47' 32" E  
402.02'

WETLANDS  
AREA R=772.53'  
L=362.93'



UNPLATTED  
LANDS  
R=552.00' L=65.96'  
326.92'  
N40° 01' 04" W  
R=265.00'  
L=715.21'

NE 1/4 NE 1/4

PRIVATE ROADWAY  
GENEVA NATIONAL  
AVENUE

