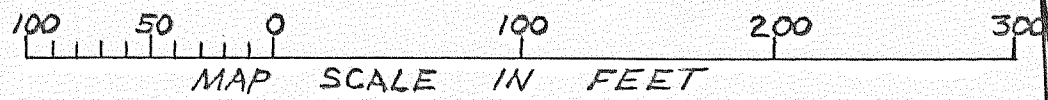
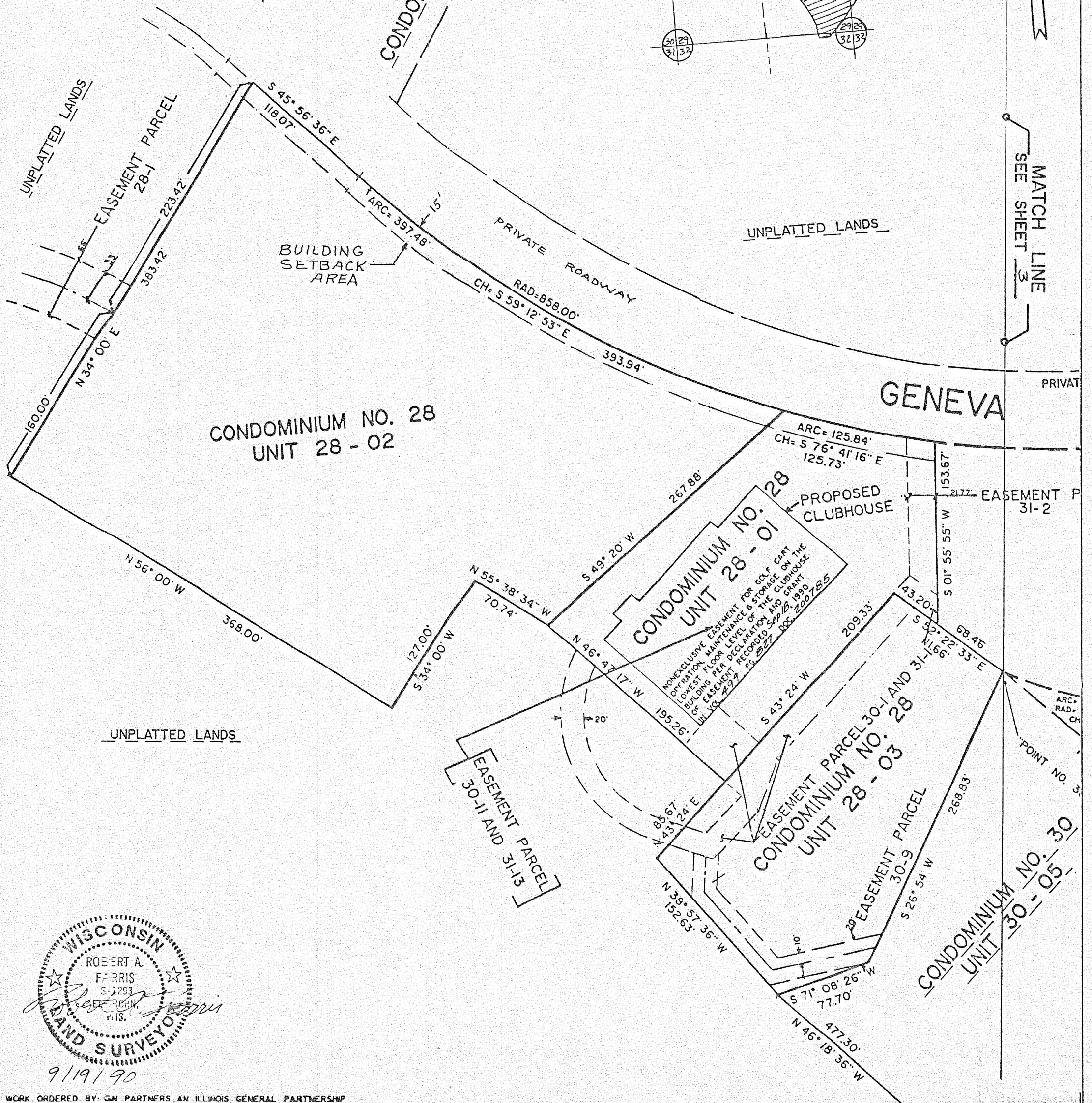
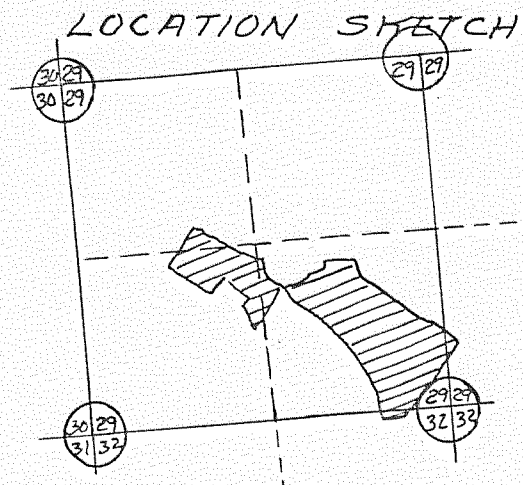


GENEVA NATIONAL CONDOMINIUM NO. 28 G.N. 28 WALWORTH COUNTY, WISCONSIN

LOCATED IN THE S 1/2 SEC. 29, T. 2 N., R. 17 E. AND NE 1/4, NW 1/4 SEC. 32, T. 2 N., R. 17 E.



See Amended
Condo # 28
Pages 280-286
Revised 4-15-94
CONDOMINIUM NO. 28



WISCONSIN
ROBERT A. FARRIS
S 1293
LAND SURVEYOR
9/19/90