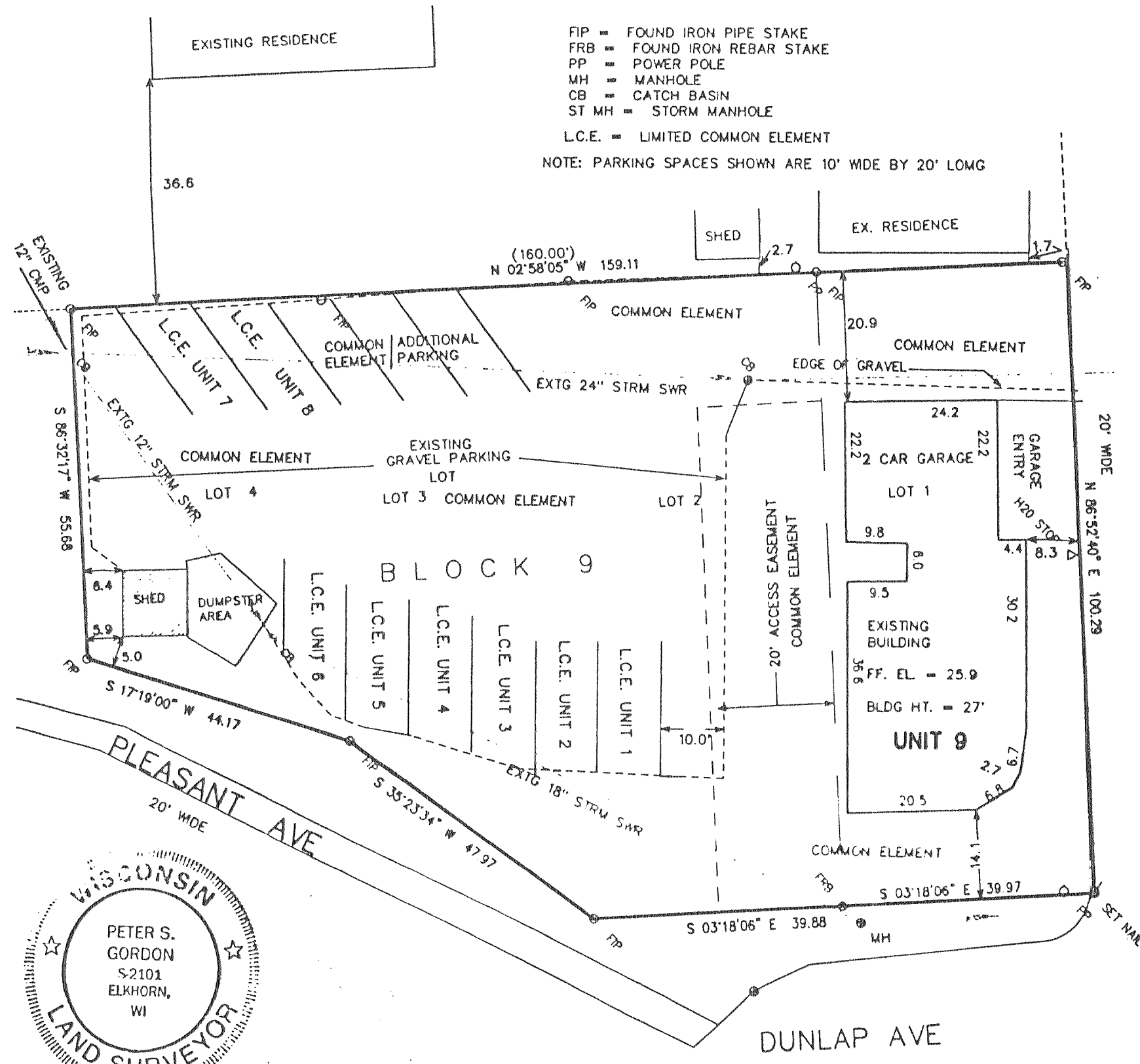


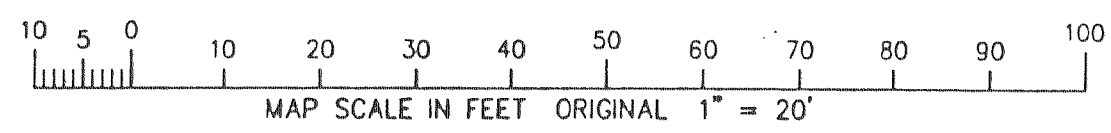
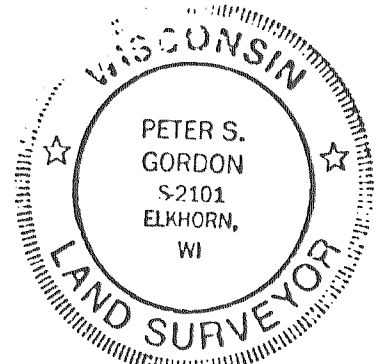
**FONTANA CLUB CONDOMINIUM**  
 LOTS 1 THRU 4 OF BLOCK 9 &  
 LOT 1 AND THE EAST 1/2 OF LOT 2 OF BLOCK 6  
 GLENWOOD SPRINGS SUBDIVISION  
 LOCATED IN THE VILLAGE OF FONTANA  
 WALWORTH COUNTY, WISCONSIN



FIP = FOUND IRON PIPE STAKE  
 FRB = FOUND IRON REBAR STAKE  
 PP = POWER POLE  
 MH = MANHOLE  
 CB = CATCH BASIN  
 ST MH = STORM MANHOLE  
 L.C.E. = LIMITED COMMON ELEMENT

NOTE: PARKING SPACES SHOWN ARE 10' WIDE BY 20' LONG

NOTE: THE FLOOR PLANS FOR UNITS 1 THRU 8 HAVE BEEN PREPARED USING INFORMATION SHOWN ON THE ARCHITECTURAL PLANS FOR THIS BUILDING AND DO NOT REPRESENT MEASUREMENT OF THE UNIT AS CONSTRUCTED. THE EXISTING BUILDING IS TO BE REMOVED AND A NEW BUILDING ERECTED IN ITS PLACE, REMOVING THE GUTTER AND EAVE ENCROACHMENTS ALONG THE EASTERLY AND SOUTHERLY LINES. ANY PHYSICAL BOUNDARIES OF ANY UNIT OR COMMON ELEMENTS, CONSTRUCTED IN SUBSTANTIAL CONFORMITY WITH THE CONDOMINIUM PLAT SHALL BE PRESUMED TO BE ITS BOUNDARIES, REGARDLESS OF THE SHIFTING, SETTLEMENT, OR LATERAL MOVEMENT OF THE BUILDING AND REGARDLESS OF MINOR VARIATIONS BETWEEN THE PHYSICAL BOUNDARIES AS DESCRIBED IN THE DECLARATION OR SHOWN ON THE CONDOMINIUM PLAT AND THE ACTUAL PHYSICAL BOUNDARIES OF ANY SUCH UNIT OR COMMON ELEMENT AS FINALLY CONSTRUCTED.

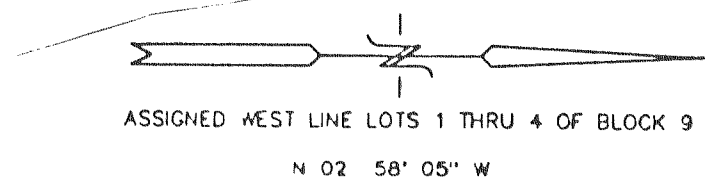


I HEREBY CERTIFY THAT THIS PLAT IS A CORRECT REPRESENTATION OF THE CONDOMINIUM DESCRIBED TO THE BEST OF MY PROFESSIONAL KNOWLEDGE AND BELIEF AND THAT THE IDENTIFICATION AND LOCATION OF EACH UNIT AND THE COMMON ELEMENTS CAN BE DETERMINED FROM THE PLAT.

DATED: 10-15-1998

*Peter S. Gordon*  
 PETER S. GORDON R.L.S. 2101

*REVISED 6/30/99*  
*7/30/99*



APPROVED THIS 11 DAY OF August 1999 BY THE VILAGE BOARD FOR THE VILAGE OF FONTANA-ON-GENEVA LAKE, WISCONSIN.

*Robert W. Samsky*  
 AUTHORIZED SIGNATURE FOR THE VILAGE OF FONTANA-ON-GENEVA LAKE