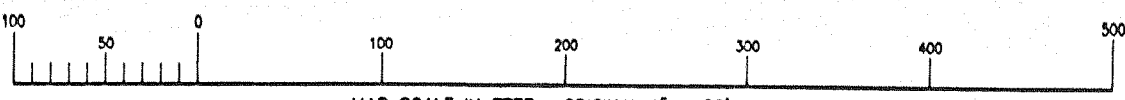


PHEASANT RIDGE

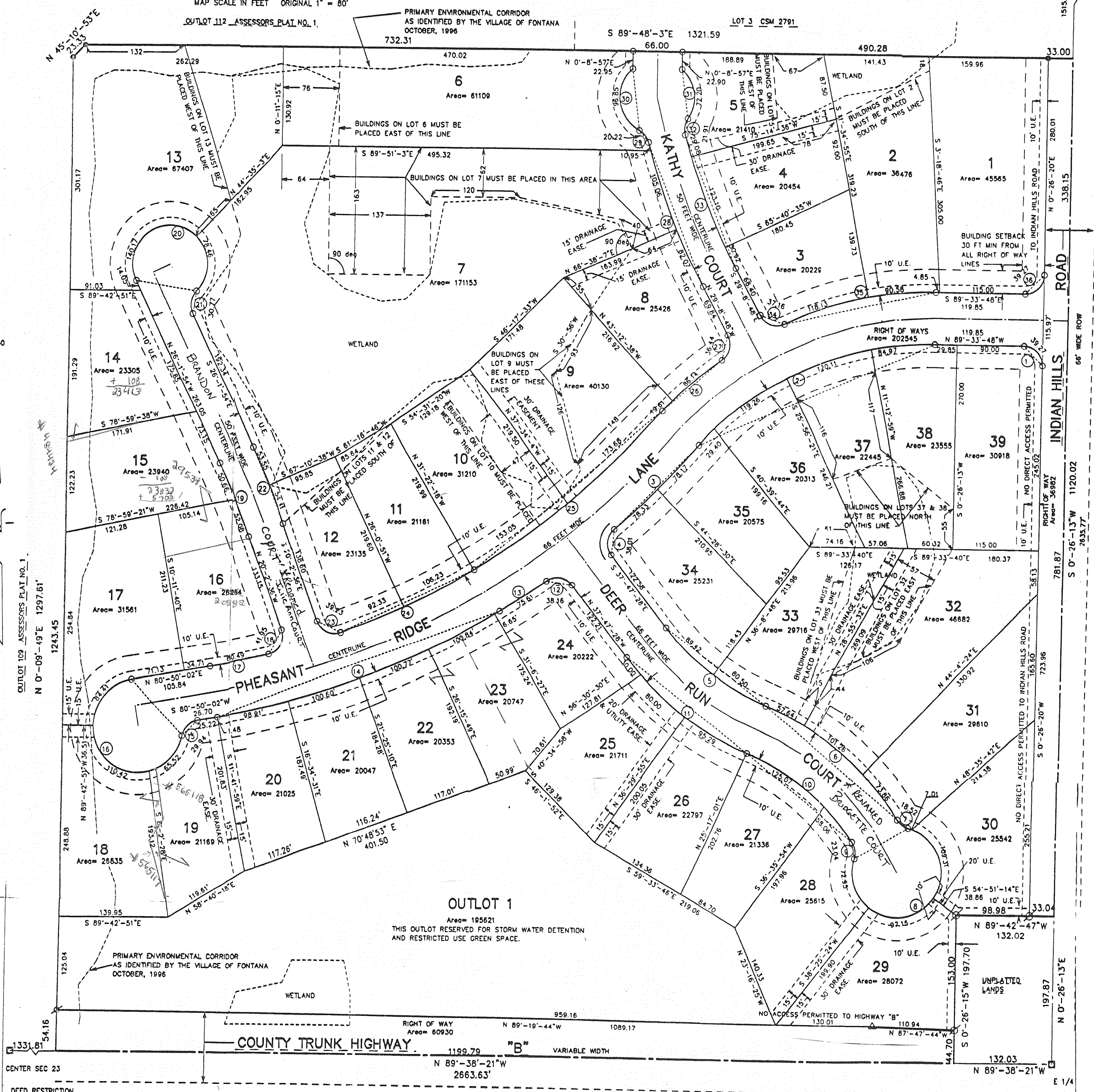
LOCATED IN THE SE 1/4 OF NE 1/4 SECTION 23, TOWN 1 NORTH, RANGE 16 EAST
VILLAGE OF FONTANA-ON-GENEVA LAKE, WALWORTH COUNTY, WISCONSIN



OUTLOT 112 ASSESSORS PLAT NO. 1

PRIMARY ENVIRONMENTAL CORRIDOR AS IDENTIFIED BY THE VILLAGE OF FONTANA OCTOBER, 1996

LOT 3 CSM 2791



OUTLOT 1
Area= 195621
THIS OUTLOT RESERVED FOR STORM WATER DETENTION AND RESTRICTED USE GREEN SPACE.

PRIMARY ENVIRONMENTAL CORRIDOR AS IDENTIFIED BY THE VILLAGE OF FONTANA OCTOBER, 1996

COUNTY TRUNK HIGHWAY "B" VARIABLE WIDTH

DEED RESTRICTION
LANDS LYING WITHIN DESIGNATED PRIMARY ENVIRONMENTAL CORRIDORS OR WETLANDS SHALL BE PRESERVED AND PROTECTED BY PROHIBITING GRADING, FILLING, AND EXCAVATION; THE ERECTION OF BUILDINGS; THE REMOVAL OR DESTRUCTION OF ANY VEGETATIVE COVERS EXCEPT DEAD AND DISEASED VEGETATION AND NOXIOUS WEEDS AS DEFINED BY THE LOCAL MUNICIPALITY; THE INTRODUCTION OF PLANTS NOT INDIGENOUS TO THE EXISTING ENVIRONMENT OF THE PRESERVATION AREA; AND GRAZING BY DOMESTICATED ANIMALS.

UNPLATTED LANDS

NOTE: ALL LOTS ARE SUBJECT TO A TEN FOOT WIDE UTILITY EASEMENT ALONG ALL ROADWAY RIGHT-OF-WAYS TOGETHER WITH OTHER UTILITY EASEMENTS SHOWN ON THIS PLAT. NOTED AS U.E.

CSM 172 *Renamed Roads per Dec. 433504 Vol. 668, pg 4944