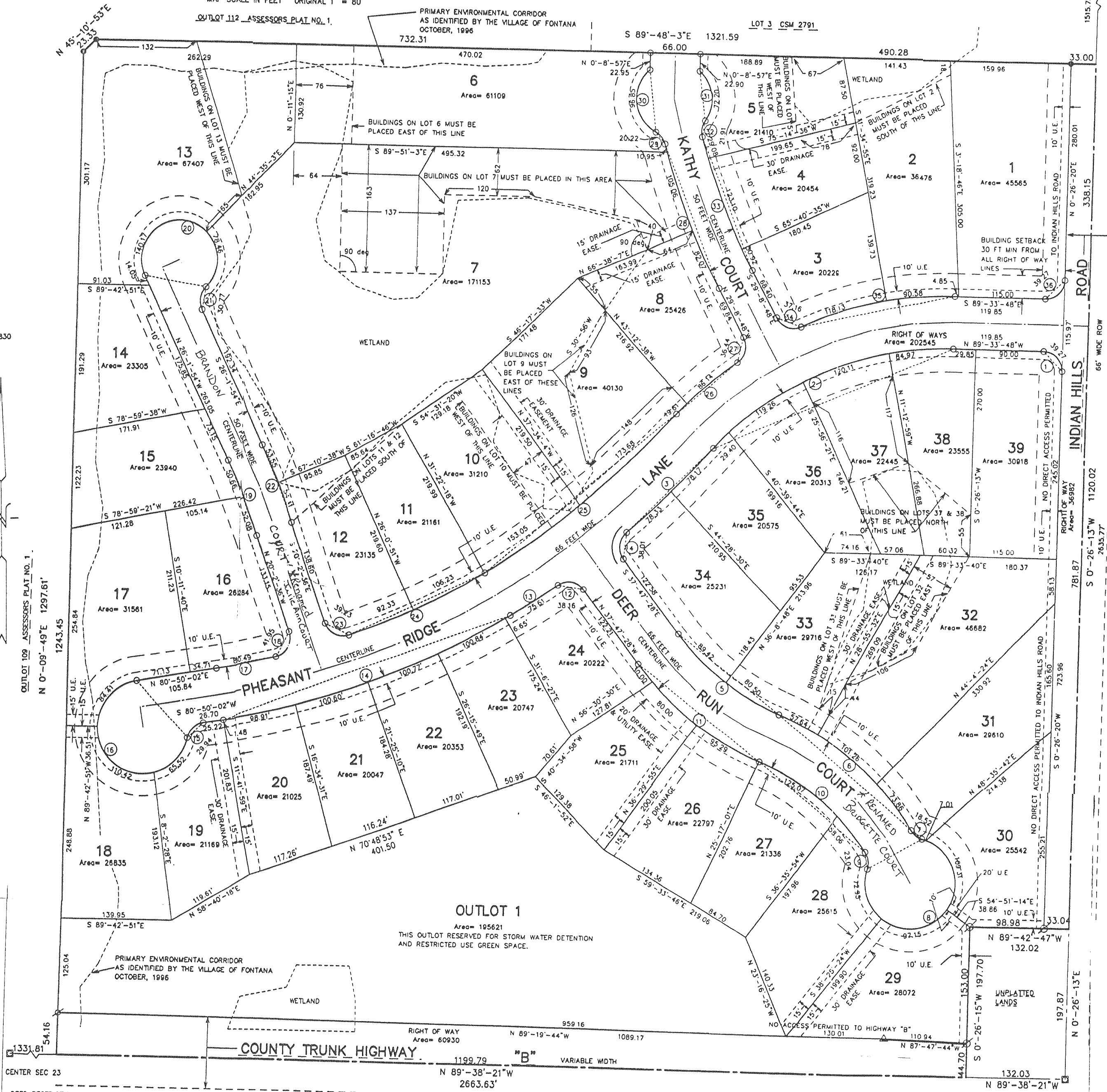
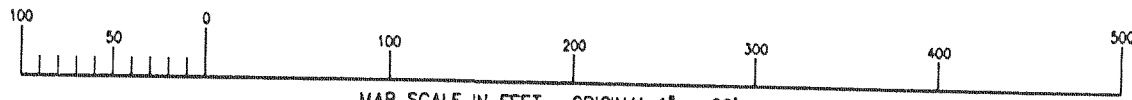


PHEASANT RIDGE

LOCATED IN THE SE 1/4 OF NE 1/4 SECTION 23, TOWN 1 NORTH, RANGE 16 EAST
VILLAGE OF FONTANA-ON-GENEVA LAKE, WALWORTH COUNTY, WISCONSIN



DEED RESTRICTION
LANDS LYING WITHIN DESIGNATED PRIMARY ENVIRONMENTAL CORRIDORS OR WETLANDS SHALL BE PRESERVED AND PROTECTED BY PROHIBITING GRADING, FILLING, AND EXCAVATION; THE ERECTION OF BUILDINGS; THE REMOVAL OR DESTRUCTION OF ANY VEGETATIVE COVERS EXCEPT DEAD AND DISEASED VEGETATION AND NOXIOUS WEEDS AS DEFINED BY THE LOCAL MUNICIPALITY; THE INTRODUCTION OF PLANTS NOT INDIGENOUS TO THE EXISTING ENVIRONMENT OF THE PRESERVATION AREA; AND GRAZING BY DOMESTICATED ANIMALS.

UNPLATTED LANDS

NOTE: ALL LOTS ARE SUBJECT TO A TEN FOOT WIDE UTILITY EASEMENT ALONG ALL ROADWAY RIGHT-OF-WAYS TOGETHER WITH OTHER UTILITY EASEMENTS SHOWN ON THIS PLAT. NOTED AS U.E.

CSM 172

*Renamed Roads per Dec. 433504 Vol. 668, pg 4944