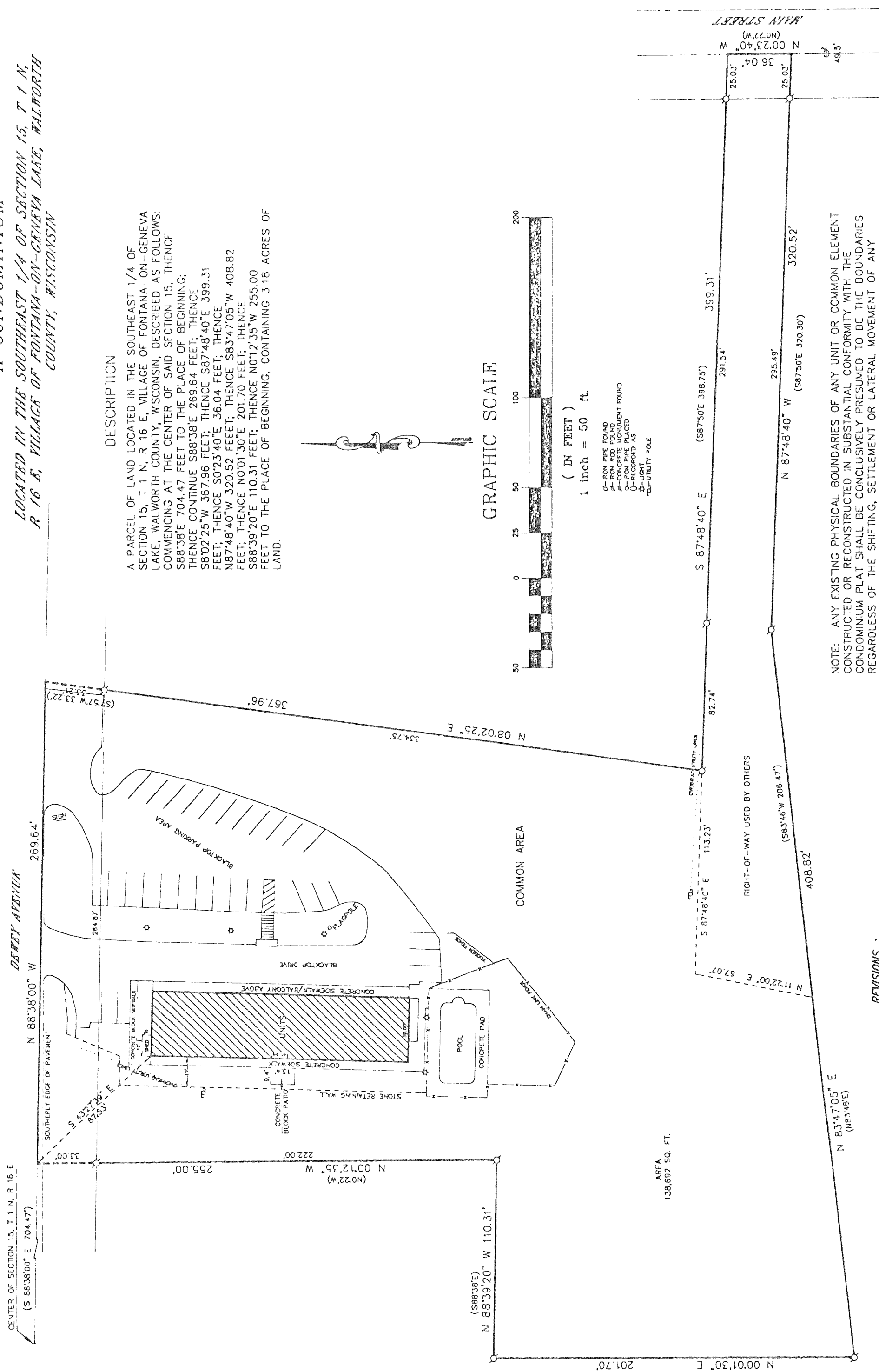


GENEVA POINTE

EXHIBIT "A"

A CONDOMINIUM

LOCATED IN THE SOUTHEAST 1/4 OF SECTION 15, T 1 N,
R 16 E, VILLAGE OF FONTANA-ON-GENEVA LAKE, WALWORTH
COUNTY, WISCONSIN



NOTE: ANY EXISTING PHYSICAL BOUNDARIES OF ANY UNIT OR COMMON ELEMENT CONSTRUCTED OR RECONSTRUCTED IN SUBSTANTIAL CONFORMITY WITH THE CONDOMINIUM PLAT SHALL BE CONCLUSIVELY PRESUMED TO BE THE BOUNDARIES REGARDLESS OF THE SHIFTING, SETTLEMENT OR LATERAL MOVEMENT OF ANY BUILDING AND REGARDLESS OF MINOR VARIATIONS BETWEEN THE PHYSICAL BOUNDARIES AS DESCRIBED IN THE DECLARATION OR SHOWN ON THE CONDOMINIUM PLAT AND THE EXISTING PHYSICAL BOUNDARIES OF ANY SUCH UNIT OR COMMON ELEMENT.

SHEET 1 OF 5 SHEETS

SHEET 1 OF 5 SHF