

167515

**CLEAR SKY LODGE
A CONDOMINIUM LOCATED IN
GOVERNMENT LOT 4, SECTION 18,
T1N, R1E, VILLAGE OF FONTANA
-ON-GENEVA LAKE, WALWORTH
COUNTY, WISCONSIN**

Jensen Surveying & Mapping S.C.
45 B. Wisconsin St., P.O. Box 322
Elkhorn, Wisconsin, 53121
(414) 723-3434

NO.	DESCRIPTION	DATE
1	REVISION	
2	REVISION	
3	REVISION	
4	REVISION	
5	REVISION	
6	REVISION	
7	REVISION	
8	REVISION	
9	REVISION	
10	REVISION	
11	REVISION	
12	REVISION	
13	REVISION	
14	REVISION	
15	REVISION	
16	REVISION	
17	REVISION	
18	REVISION	
19	REVISION	
20	REVISION	
21	REVISION	
22	REVISION	
23	REVISION	
24	REVISION	
25	REVISION	
26	REVISION	
27	REVISION	
28	REVISION	
29	REVISION	
30	REVISION	
31	REVISION	
32	REVISION	
33	REVISION	
34	REVISION	
35	REVISION	
36	REVISION	
37	REVISION	
38	REVISION	
39	REVISION	
40	REVISION	
41	REVISION	
42	REVISION	
43	REVISION	
44	REVISION	
45	REVISION	
46	REVISION	
47	REVISION	
48	REVISION	
49	REVISION	
50	REVISION	
51	REVISION	
52	REVISION	
53	REVISION	
54	REVISION	
55	REVISION	
56	REVISION	
57	REVISION	
58	REVISION	
59	REVISION	
60	REVISION	
61	REVISION	
62	REVISION	
63	REVISION	
64	REVISION	
65	REVISION	
66	REVISION	
67	REVISION	
68	REVISION	
69	REVISION	
70	REVISION	
71	REVISION	
72	REVISION	
73	REVISION	
74	REVISION	
75	REVISION	
76	REVISION	
77	REVISION	
78	REVISION	
79	REVISION	
80	REVISION	
81	REVISION	
82	REVISION	
83	REVISION	
84	REVISION	
85	REVISION	
86	REVISION	
87	REVISION	
88	REVISION	
89	REVISION	
90	REVISION	
91	REVISION	
92	REVISION	
93	REVISION	
94	REVISION	
95	REVISION	
96	REVISION	
97	REVISION	
98	REVISION	
99	REVISION	
100	REVISION	

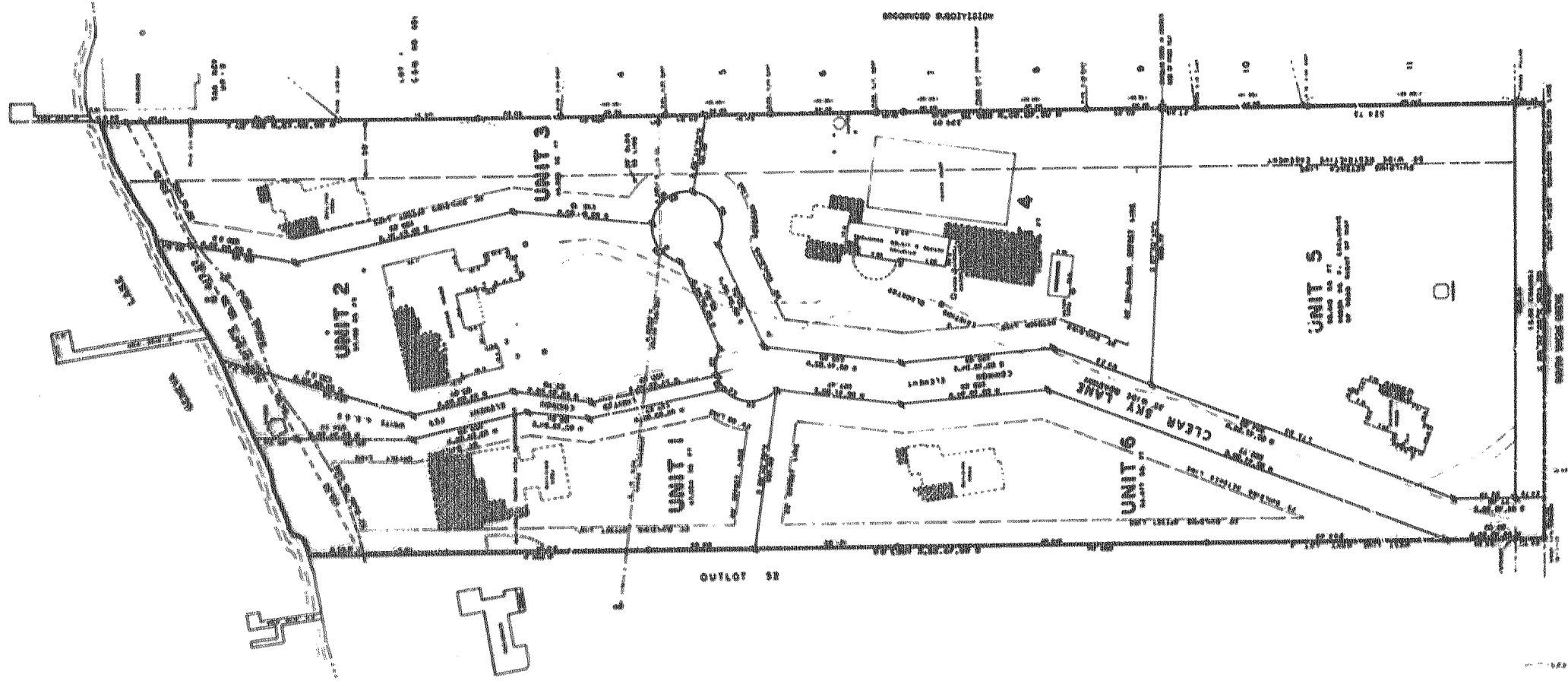


EXHIBIT A

Sheet 1 of 2

Recorded in Vol _____
 Page _____
 '88 Sept 1 PM 2 19
 3:44
 Lois M. Ketterhagen
 Reg. of Deeds
 Walworth County, Wis
 Dec 3, 1988
 12:00

**PROPOSED PIER PLACEMENT AND DESIGNATION OF
 RIPARIAN RIGHTS FOR CLEAR SKY LODGE
 A CONDOMINIUM LOCATED IN GOVERNMENT LOT 4, T1N,
 R1E, VILLAGE OF FONTANA - ON - GENEVA LAKE,
 WALWORTH COUNTY, WISCONSIN**

NOTE:
 PIER LOCATION AND CONFIGURATION
 SUBJECT TO GOVERNING AUTHORITIES APPROVAL.
 LINES OF RIPARIAN INTEREST DETERMINED BY
 THE KNITTER METHOD AS RECOMMENDED BY
 THE WISCONSIN D.M.R.

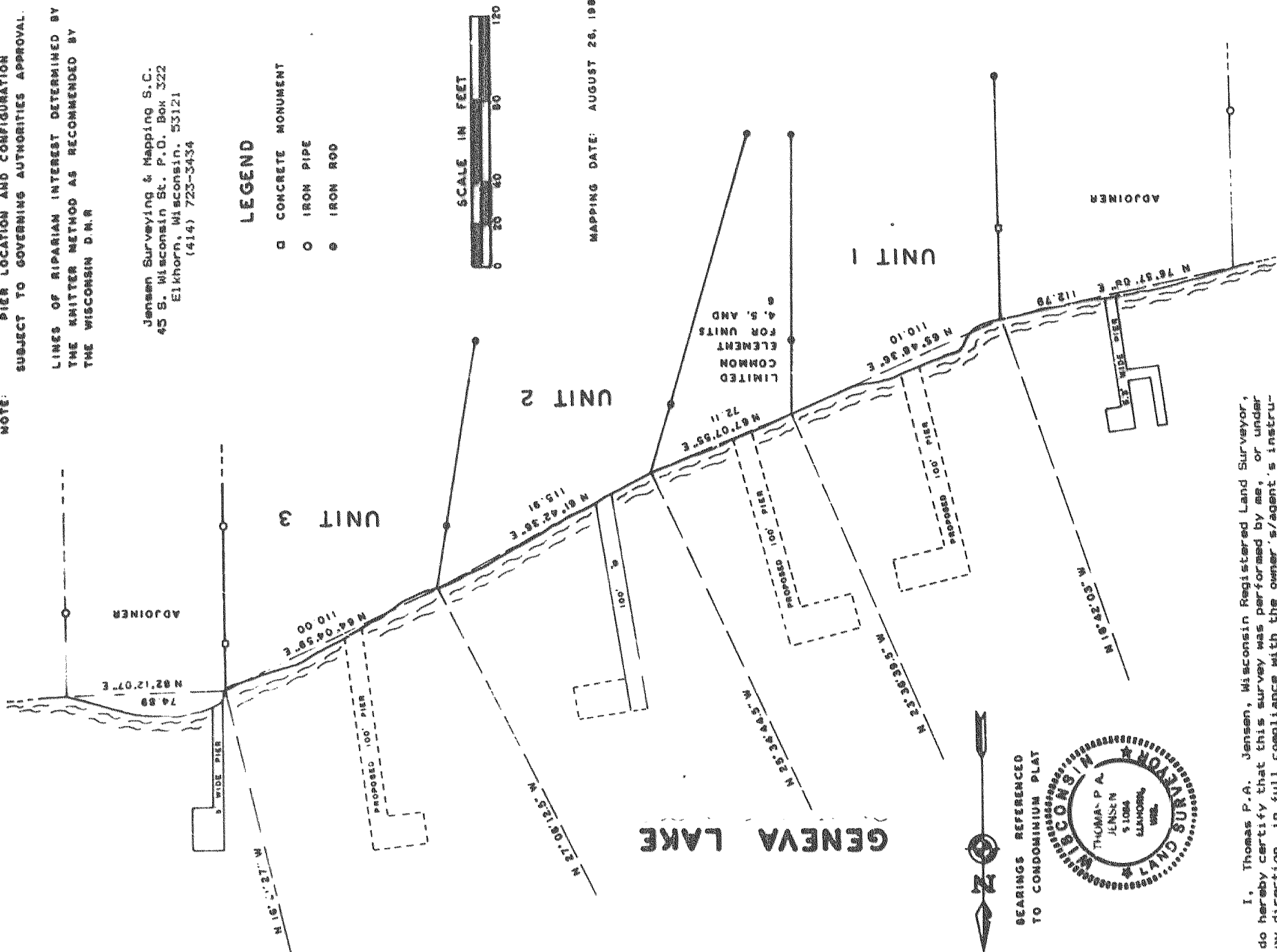
Jensen Surveying & Mapping S.C.
 45 B. Wisconsin St., P.O. Box 322
 Elkhorn, Wisconsin, 53121
 (414) 723-3434

LEGEND

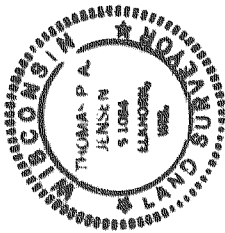
- CONCRETE MONUMENT
- IRON PIPE
- IRON ROD



MAPPING DATE: AUGUST 26, 1988



BEARINGS REFERENCED
TO CONDOMINIUM PLAT



I, Thomas P.A. Jensen, Wisconsin Registered Land Surveyor,
 do hereby certify that this survey was performed by me, or under
 my direction, in full compliance with the owner's instructions,
 and Chapter A-E 5 of the Wisconsin Administrative Code
 "Minimum Standards For Property Surveys"; and that this map is
 an accurate representation thereof to the best of my knowledge
 and belief.

Thomas P.A. Jensen
 Thomas P.A. Jensen R.L.S. 10000
 Jensen Surveying & Mapping S.C.

EXHIBIT C
Sheet 2 of 2