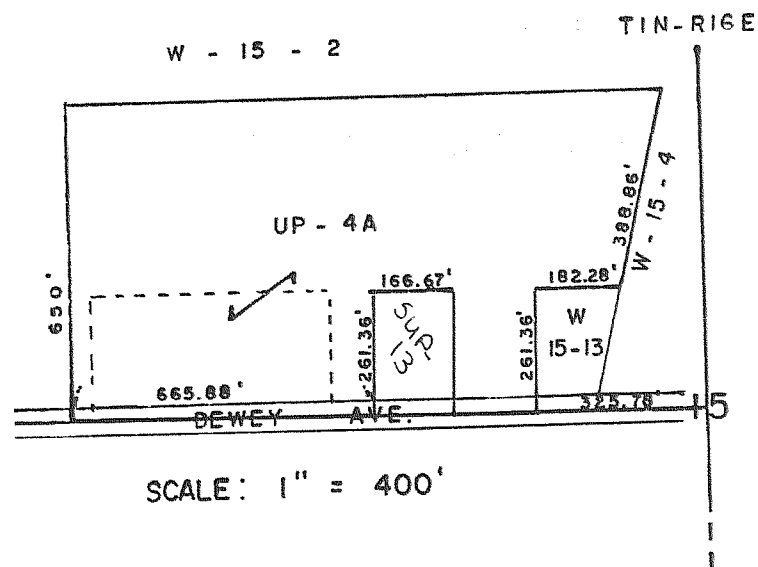


# C. L. DOUGLAS SUB. PART OF ASSESSORS PLAT NO. 1 VILLAGE OF FONTANA

NE 1/4 SEC 15 - TIN - R16E

ALSO UP 4A

PARCEL LOCATED IN THE SE 1/4  
OF THE NW 1/4 OF SEC. 15, NOW  
ANNEXED BY THE VILLAGE OF FONTANA.



SCALE: 1" = 200'

