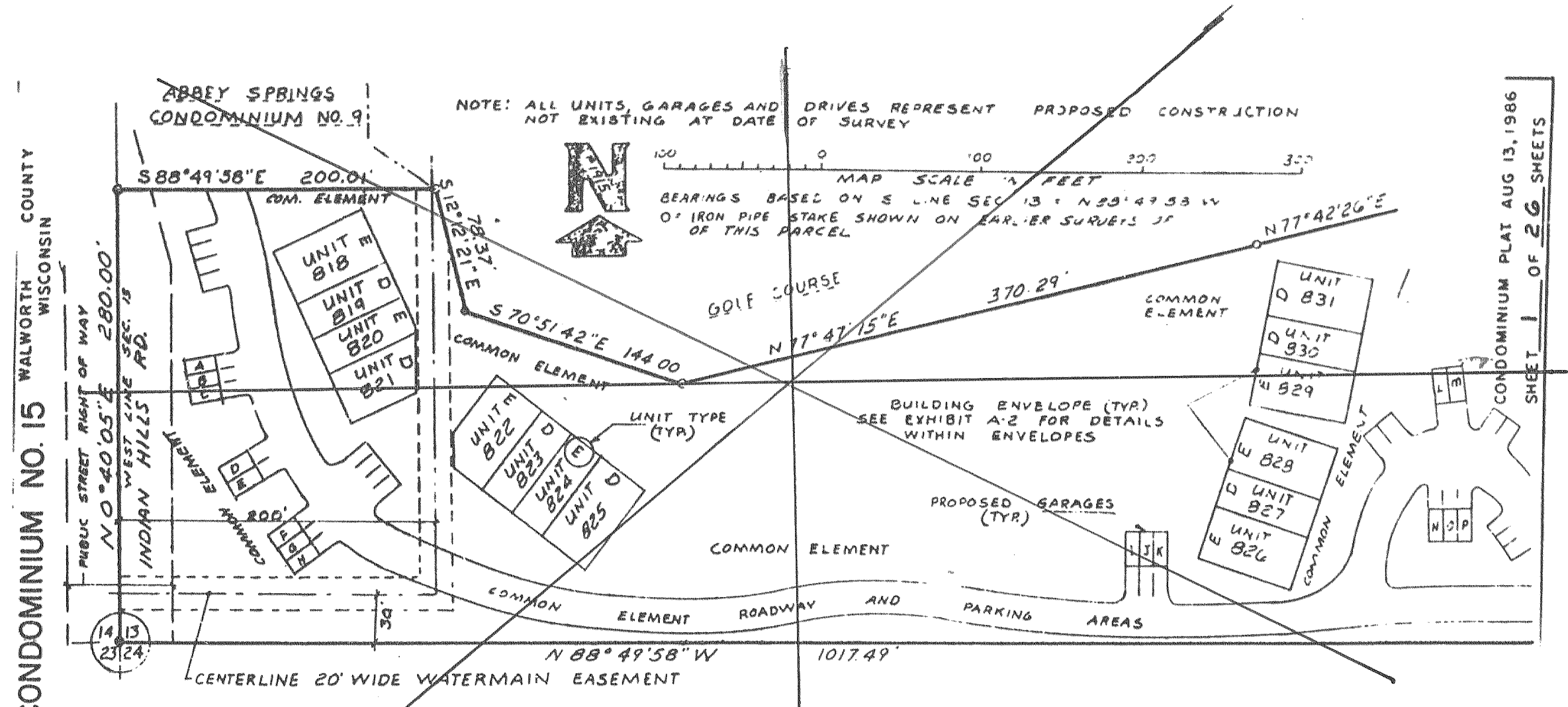


# ABBEY SPRINGS CONDOMINIUM NO. 15

NOW:  
PART OF  
EXHIBIT C  
CONDO # 15  
&  
PART OF  
EXHIBIT D  
CONDO #15  
EXPANSION  
REAL ESTATE



ABBEY SPRINGS CONDOMINIUM NO. 15

**LEGAL DESCRIPTION OF CONDOMINIUM NO. 15**

Part of the Southwest 1/4 of Section 13 and part of the Northwest 1/4 of the Northwest 1/4 of Section 24 all in Town 1 North, Range 16 East, Village of Fontana-on-Geneva Lake, Walworth County, Wisconsin beginning at a concrete monument marking the Southwest corner of said Section 24; thence N 0deg 40min 05sec E 280.00 feet to the Southwest corner of Abbey Springs Condominium No. 9; thence S 88deg 49min 58sec E 200.01 feet along the South line of said Condominium; thence S 12deg 12min 21sec E 78.37 feet; thence S 70deg 51min 42sec E 144.00 feet; thence N 77deg 47min 15sec E 370.29 feet; thence N 77deg 42min 26sec E 463.56 feet; thence N 79deg 38min 59sec E 415.79 feet; thence N 79deg 45min 19sec E 100.00 feet; thence S 10deg 14min 40sec E 200.00 feet; thence S 49deg 08min 10sec W 387.80 feet to the South line of said Section 13; thence N 88deg 49min 58sec W 100.00 feet to the 1/16th corner; thence S 1deg 10min 02sec W 186.12 feet; thence N 88deg 49min 58sec W 105.60 feet; thence N 45deg 34min 48sec W 271.26 feet; thence N 88deg 49min 58sec W 1017.49 feet along the South line of said Section 13 to the point of beginning containing 11.75 acres more or less.

I HEREBY CERTIFY that Condominium No. 15 was surveyed under my direction for Keefe Madsen Venture and that this plat is a correct representation of the condominium described and that the identification and location of each unit and the common elements can be determined from the plat.

ABBEY SPRINGS CONDOMINIUM NO. 15

