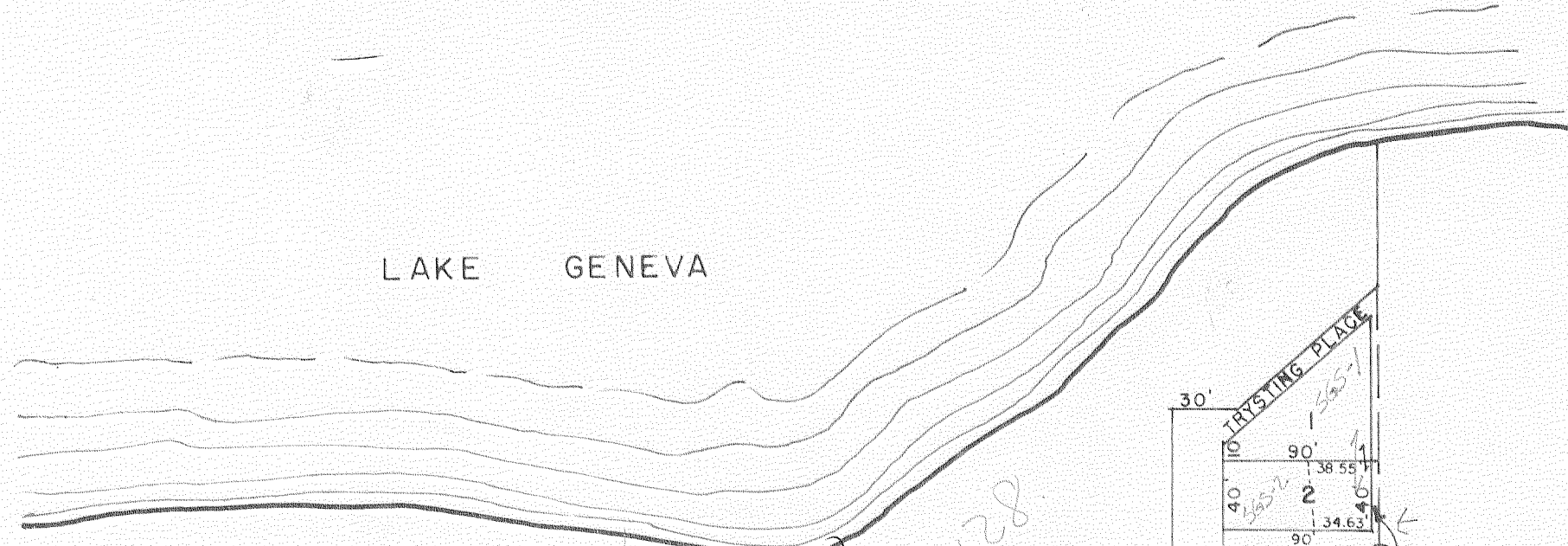


GLENWOOD SPRINGS SUB. "E-PART" VILLAGE OF FONTANA

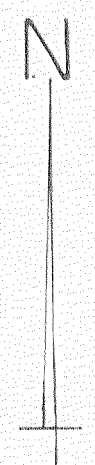
SEC. 14 - TIN - R16E



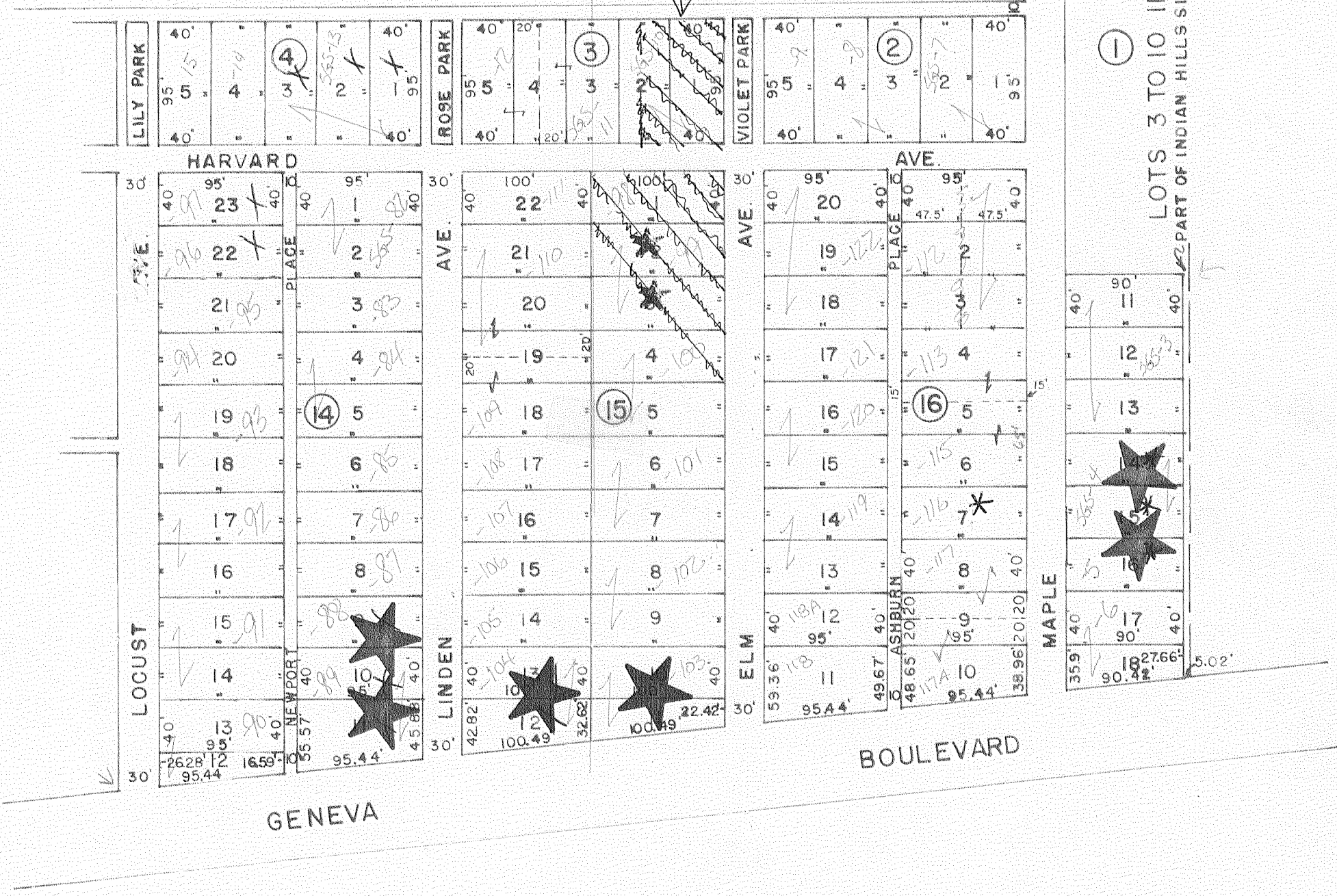
LAKE GENEVA

PARK

No change
SGS-128



SCALE: 1"=100'



ORIGINAL LOT LINES

PROPERTY DIVISION LINES

*Note: All st. & alleys
fall under tax byt SGS-128*
Parks
Tax Prefix - SGS