

PART OF ASSESSORS PLAT NO. 1

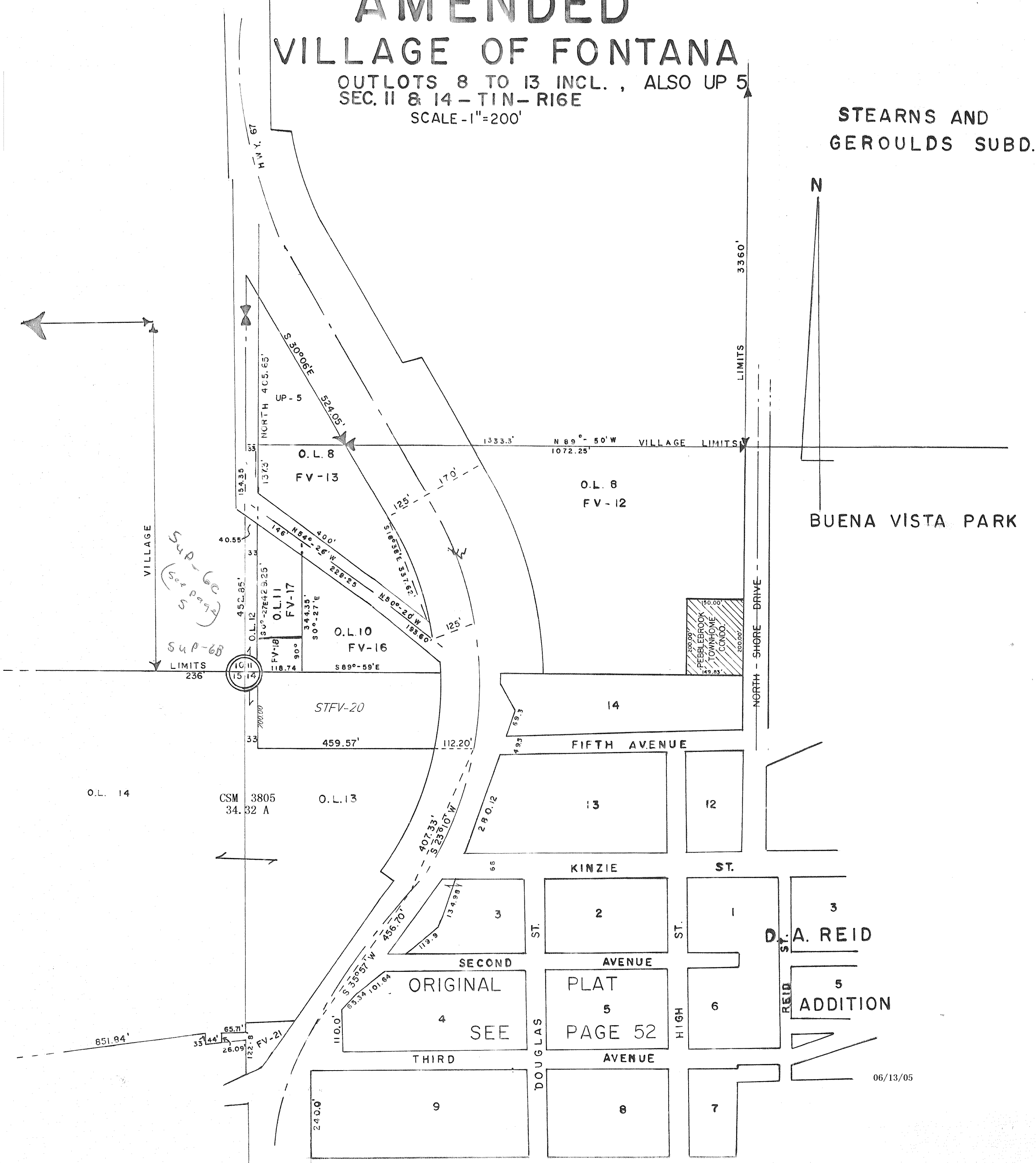
AMENDED

VILLAGE OF FONTANA

OUTLOTS 8 TO 13 INCL., ALSO UP 5
SEC. II & 14 - TIN-RIGE

SCALE - 1" = 200'

STEARNS AND
GEROULDS SUBD.



BUENA VISTA PARK

NORTH - SHORE DRIVE

FIFTH AVENUE

KINZIE ST.

SECOND AVENUE

ORIGINAL PLAT

SEE PAGE 52

THIRD AVENUE

D. A. REID

REID ST. ADDITION

06/13/05

SUP-6C
(see page 5)

SUP-6B

10
15
14