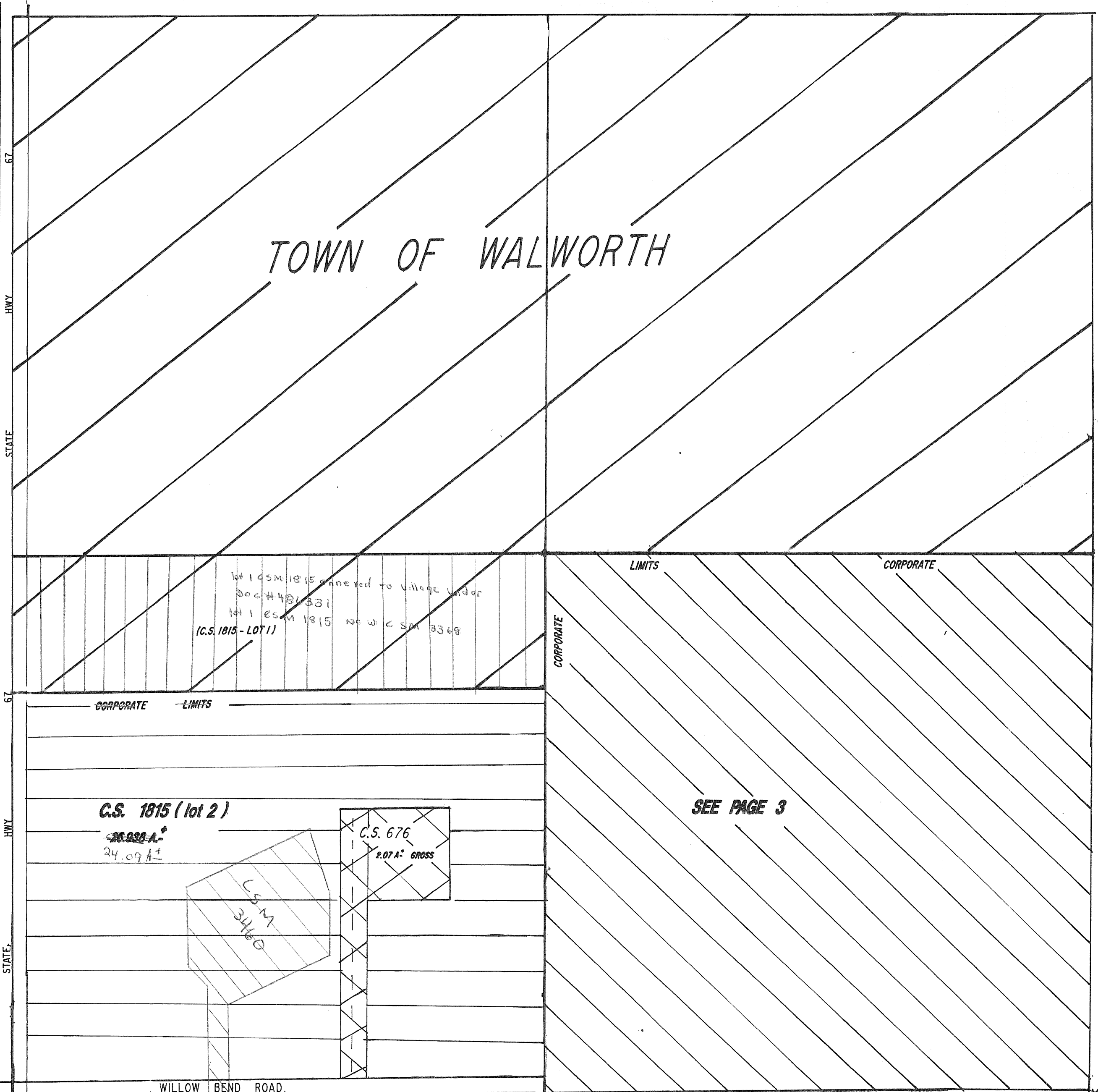


VILLAGE OF FONTANA

NW 1/4 SECTION II
T1N - R16E

TOWN OF WALWORTH



lot 1 CSM 1815 annexed to Village under
Doc # 480331
lot 1 CSM 1815 new CSM 3369
(C.S. 1815 - LOT 1)

C.S. 1815 (lot 2)

26.939 A±
24.09 A±

C.S. 676
2.07 A± GROSS

C.S. 3460

SEE PAGE 3

WILLOW BEND ROAD.

MAPPING DATE: 07/27/00

REVISIONS: