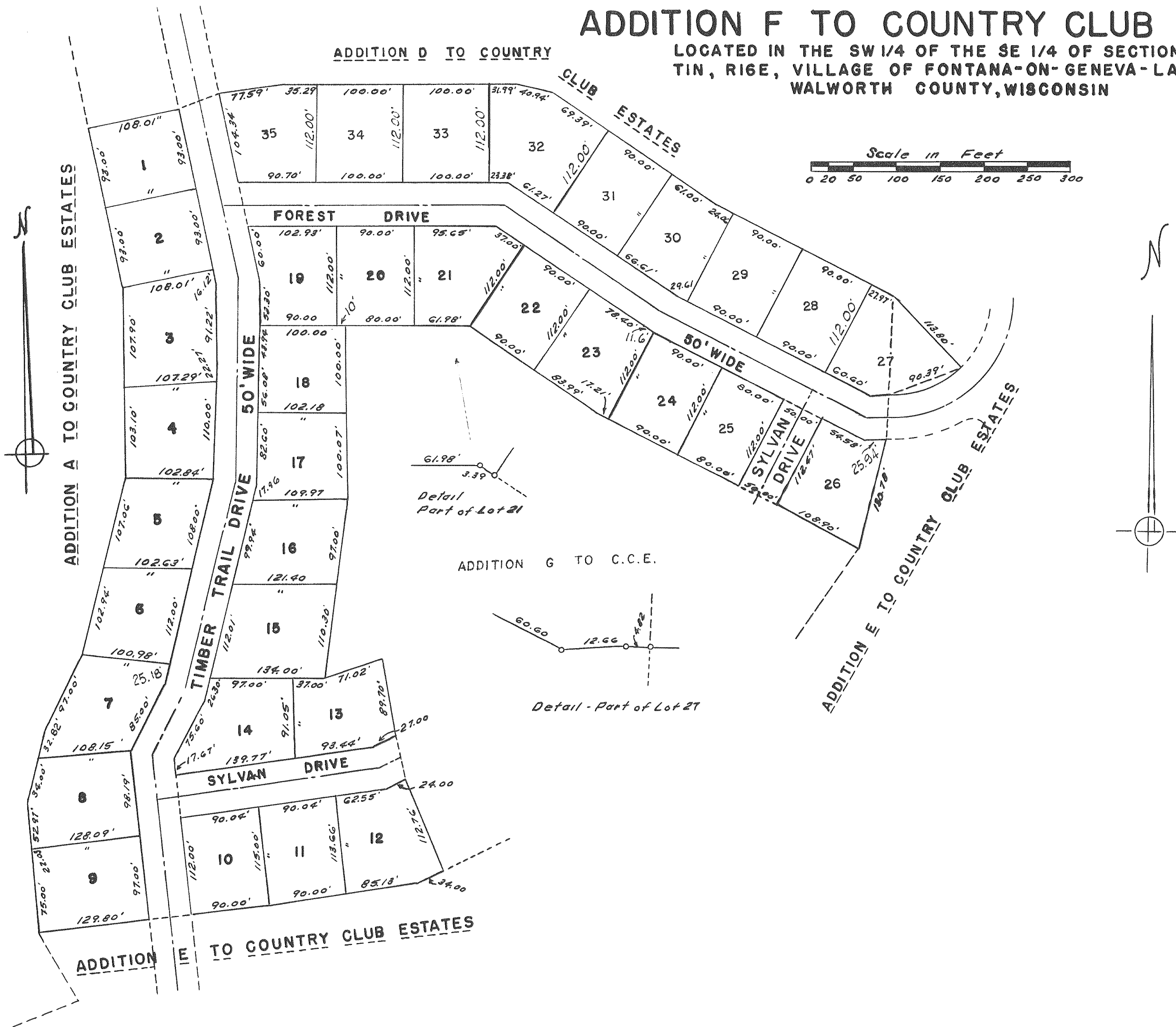
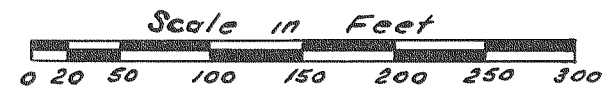


# ADDITION F TO COUNTRY CLUB ESTATES

LOCATED IN THE SW 1/4 OF THE SE 1/4 OF SECTION 14,  
T1N, R16E, VILLAGE OF FONTANA-ON-GENEVA-LAKE,  
WALWORTH COUNTY, WISCONSIN

ADDITION D TO COUNTRY CLUB ESTATES

ADDITION A TO COUNTRY CLUB ESTATES



ADDITION G TO C.C.E.

ADDITION E TO COUNTRY CLUB ESTATES

ADDITION E TO COUNTRY CLUB ESTATES