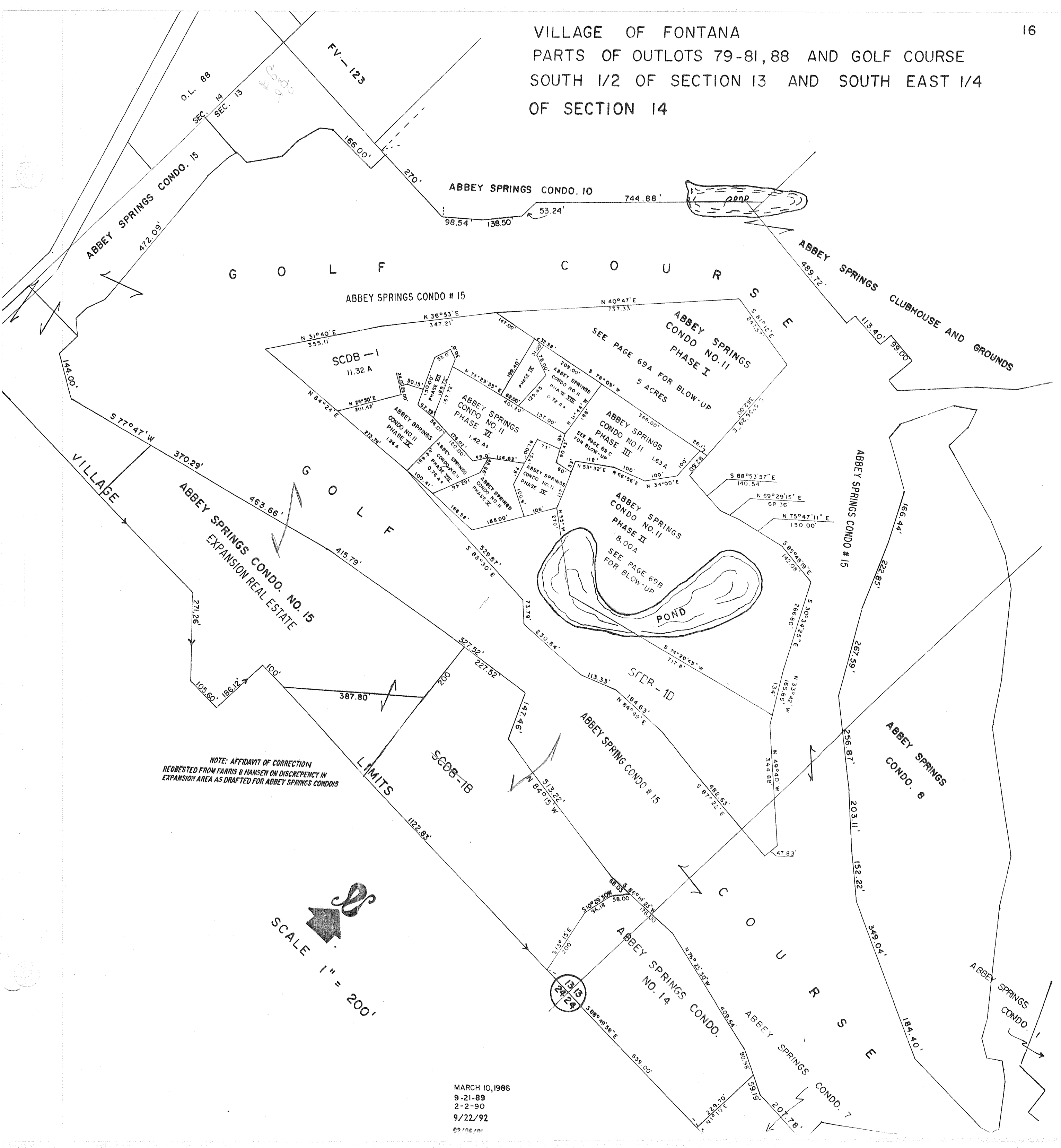
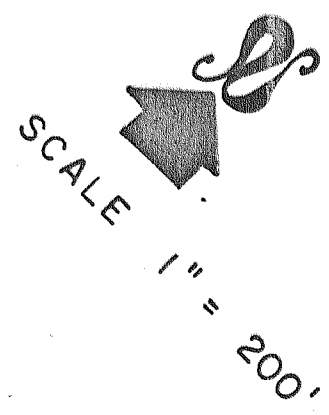


VILLAGE OF FONTANA
PARTS OF OUTLOTS 79-81, 88 AND GOLF COURSE
SOUTH 1/2 OF SECTION 13 AND SOUTH EAST 1/4
OF SECTION 14



NOTE: AFFIDAVIT OF CORRECTION
REQUESTED FROM FARRIS & HANSEN ON DISCREPANCY IN
EXPANSION AREA AS DRAFTED FOR ABBEY SPRINGS CONDOS



MARCH 10, 1986
9-21-89
2-2-90
9/22/92
02/06/01